



Theft leads to horse accident

Rochelle Ashford feared the worst, last Wednesday morning, when she heard there had been an accident on Nga Tawa Rd near Marton, involving stray horses.

Rochelle had been out looking for her horses since 6am. Overnight, someone had cut the fence and stolen her electric fence charger, letting the horses out. She discovered they were missing when she went out to feed them that morning and had been frantic ever since. When a friend tagged her in a Facebook post about the accident, she knew it was her horses. Dude, the horse that was hit, is about 17 years old and almost completely blind. Fairy, his "seeing-eye horse", is about a year younger.

The two were walking down Nga Tawa Road, near Nga Tawa School, in foggy conditions, when Dude was hit by two cars. Luckily his injuries weren't life-threatening and Rochelle expects him to make a full recovery.

Rochelle is very grateful to the staff and students of Nga Tawa School and especially Libby Rayner, who got the horses to safety, in one of their paddocks and cared for them until Rochelle could get them home.

She's also incredibly grateful no people were hurt and Dude's injuries weren't severe. "Thank God there weren't three fatalities," she says. "Knowing everyone was all right was such a relief."

What upset Rochelle the most was that someone felt entitled to take the fence charger. "We've got a spare unit – if someone needed a charger, all they had to do was ask and we would have loaned it to them. Instead they took one and cut a hole in the fence and put two horses and several people at risk." Story and photo Belinda Howard.



Rochelle Ashford's daughter Leila, reunited with her beloved horse Dude.

FARMERS DRIVER WANTED

Must have
Class 5 Licence

Hay, straw and balage for sale

CONTACT

BRUCE GORDON CONTRACTING LTD

CALL US ON 0800 CROP IT (276748) or 063276094

GK SKOU TRANSPORT

LIVESTOCK
AND GENERAL
TRANSPORT

37 Kensington Road
MARTON

Ph 06 327 6424

027 442 7463

Email:

graeme.skou@xtra.co.nz

Big enough to compete - small enough to care



FAMILY TREE SCROLLS

1m x 35cm GREYSCALE \$12
COLOUR \$28
+ one off set up cost

MARTON PRINT YOUR LOCAL PRINTERY

Comfort and Style

Flower Bomb
Chair



\$1195

Calico 3-2



\$1899

American Rustic
Desk



\$1199

Huge Selection of Giftware

Shop Hours:

Monday - Friday 9-5pm

Saturday 9-1pm

Ward's FURNITURE LTD
VISIT OUR MASSIVE SHOWROOM TODAY



219 Broadway, Marton

Phone: 06 327 6045

Email: ward.furn@xtra.co.nz

Web: www.wardsfurniture.co.nz

Farmer standing for Central Ward

Huntermville area farmer Richard Lambert has been nominated as candidate for the Central Ward in the Rangitikei District Council local government elections in October. Richard farms north of Taihape near the northern boundary. He says he was encouraged to stand and the time is right personally. He is keen to work for the rural voters in the Rangitikei District and says, "I will need the support of all rural voters in the Central Ward, as well as some urban voters, to be elected. There are five councillors needed for the Central

Ward and there is a strong Marton urban vote, so rural people need to vote. " The Central Ward includes Huntermville and Marton. The new three ward system, introduced for this election, means Huntermville no longer has its own ward or councillor but if central rural voters support a single candidate, they could be successful.

Richard Lambert says he intends to visit as many rural voters as he can including those in far flung parts of the Central Ward. He says election day, October 12, is also his birthday so, if he manages to get elected, it will be a good do. Nominations opened last week and so far, Andy Watson and Dave Wilson, Coral Raukawa - Manuel have been nominated along with Richard Lambert.

On October 12, votes will be counted to decide 12 representatives on the Rangitikei District Council - mayor, 5 Central Ward councillors; 3 Northern Ward councillors; Southern Ward councillors; 4 Rātana Community Board members and 4 Taihape Community Board members. Also decided will be 2 members to represent the Manawatu-Rangitikei constituency of Horizons Regional Council. 1 member to represent the Ngaruroro constituency of the Hawke's Bay Regional Council and 7 Whanganui District Health Board members - the WDH B election is carried out under the Single Transferable Vote (STV) system designed to achieve proportional representation through a ranked system.

Story and photo Liz Rayner

Taking a bus using Horizons commuter bus services

Have you ever tried to take a bus from Rangitikei to one of our nearby cities? What if you are new to Rangitikei, cannot drive a car, where do you find the information? What commuter bus services are available and where do you look to find out?

Here is the result of a long search for the complicated answers

Start with a search (if you have a computer) and the options should appear. A check at the Marton bus stop in Lower High St reveals no timetable on offer for any bus service. Firstly, you need a computer or cell phone to access the Horizons Regional Council bus timetables website. You have to click Buses & Transport then Timetables, then Regional or - click here for timetables- search for Marton to Palmerston North Commute to find timetables.

There is a weekday timetable but it doesn't include the monthly commuter bus service from Taihape to Palmerston North or Whanganui - you have to know about that and click that separately. There are PDF files to download and print - for both options.

Rangitikei District Council also has these bus timetables on its website, under Services,



Richard Lambert

with PDF's to open also. Once you have the timetable then there is paying for a ticket.

In Rangitikei, the only way to buy a ticket is from the bus driver, otherwise you have to buy them at the city bus depots. You can purchase a prepaid GoCard, which is loaded with money, so you don't have to use cash. GoCard initial purchase is \$12, including \$5 of travel already loaded (it has a minimum top up \$10). A Monthly Pass travel card allows you 28 days unlimited travel from first use. Simply swipe your card within 5 centimetres of the electronic reader on the bus and you are ready to go.

Initial GoCard purchases can be made onboard the buses with cash or at the bus operators' offices using cash or Eftpos. You can load more travel dollars onto your card on the bus (with cash) or at the Transit depot on Matipo St, Palmerston North or at the Transit Travel Centre on Ridgway St, Wanganui. Supergold travel is free on the morning service only and Under 5 travel is free on the buses.

Here are the services available....

Marton To Palmerston North

Services arrive Palmerston North Main St terminal at 7.50am and depart 5.10pm. Services run Monday - Friday and don't operate on public holidays. times and costs are: Marton Bus Shelter, Lower High St - 7am \$7 - \$5.75. Bulls Intercity Bus Depot 7.10am - \$5.50-\$4.50. Sanson - call an operator to arrange pick up 7.20am \$5.50 - \$4.

Taihape - Palmerston North

Catch the bus to Whanganui on the first Thursday of every month or to Palmerston North on the third Thursday of every month with Horizons Regional Council. Services arrive in Whanganui/Palmerston. The bus passes through Taihape Railway Station 9am - cost \$28. Taihape Isite 9.05am \$28.- Ohingaiti opposite Ohingaiti Hotel - 9.25am \$18. Huntermville opposite Relish Café - 9.40am - \$18. Marton Bus shelter, Lower High St - 10am - \$13. Turakina (Whanganui trip only) Intercity bus stop opposite Mobil SH3, 10.15am - \$10. Bulls Information Centre (Palmerston North trip only), 10.15am - \$10. The bus arrives in Whanganui/Palmerston North (via Feilding) at 10.45am and departs at 3.30pm.

If you want to catch a plane or train in Palmerston North North you would have to catch the city Palmerston North to Feilding bus at 8.25 - 8.38am to get off at PN Airport or PN train station.

There is no Rangitikei town bus service connection to the Palmerston North airport or to the city train station available. Conclusion - it is not as easy as you think to catch a bus in Rangitikei and there is lot of waiting involved.

Story Liz Rayner.

You can't beat the bus!
Will you be on-board?

Catch the bus to Whanganui on the FIRST THURSDAY of every month or to Palmerston North on the THIRD THURSDAY of every month with Horizons Regional Council.

Services arrive in Whanganui/Palmerston North (via Feilding) at 10.45am and depart for the return journey at 3.30pm.

TO	FROM	ARRIVE	DEPART
Taihape	Railway Station	9:05am	\$28
Isite	Isite	9:05am	\$28
Ohingaiti	Opp Ohingaiti Hotel	9:25am	\$18
Huntermville	Opp Relish Cafe	9:40am	\$18
Marton	Bus shelter, Lower High St	10:00am	\$13
Turakina (Whanganui trip only)	Intercity bus stop opp Mobil SH3	10:15am	\$10
Bulls (Palmerston North trip only)	Information Centre	10:15am	\$10

*Supergold travel is FREE on the morning service only

Dave's Homekill
For all your butchering requirements

Operating in Rangitikei & Manawatu

28 Terrace St Marton - Ph 063275551

STATIONERY ONE STOP & BOOKS
STATIONERY, BOOKS, TOYS, PUZZLES & CARDS

237 Broadway, Marton Phone 06 327 4054
onestopstationeryandbooks@outlook.com

25% OFF
MANICARE® & MITA™

manicare
MULTI AWARD WINNING BEAUTY TOOLS!

mita
#1 HAIR ACCESSORIES BRAND IN NZ PHARMACY!

292 Broadway Marton
Phone 06 327 0050

Marton Pharmacy
Medicine + Advice

Did you say park?

All dogs welcome. Saturdays at 9am
Sir James Wilson Park
www.tailsandtrails.nz
tailsandtrailsdogclub@gmail.com

TAILS & TRAILS DOG CLUB

MOP MARTON OUTDOOR POWER

Makita PETROL CHAINSAWS

FROM \$329

222 BROADWAY, MARTON
PHONE 06 327 7501

ADVERTISING DEADLINES

Display Advertising - Tuesday 12 noon
Classified Deadline - 12 noon Wednesday
Read it Thursday! online www.districtmonitor.co.nz
In your box - on line and on Facebook.

DistrictMonitor
Phone: 06 327 7881
districtmonitor@xtra.co.nz monitoradvertising@xtra.co.nz

HEALTH SCENE



Hospital's history among host of heritage events

With a lineage stretching back 175 years, Whanganui Hospital was a must to be part of Whanganui's upcoming heritage month, and it will host an event on Saturday, August 10.

The celebration of European and Māori built heritage runs from August 2 to September 15 and includes the marking of the 100-year anniversaries of the Sarjeant Gallery and Durie Hill elevator.

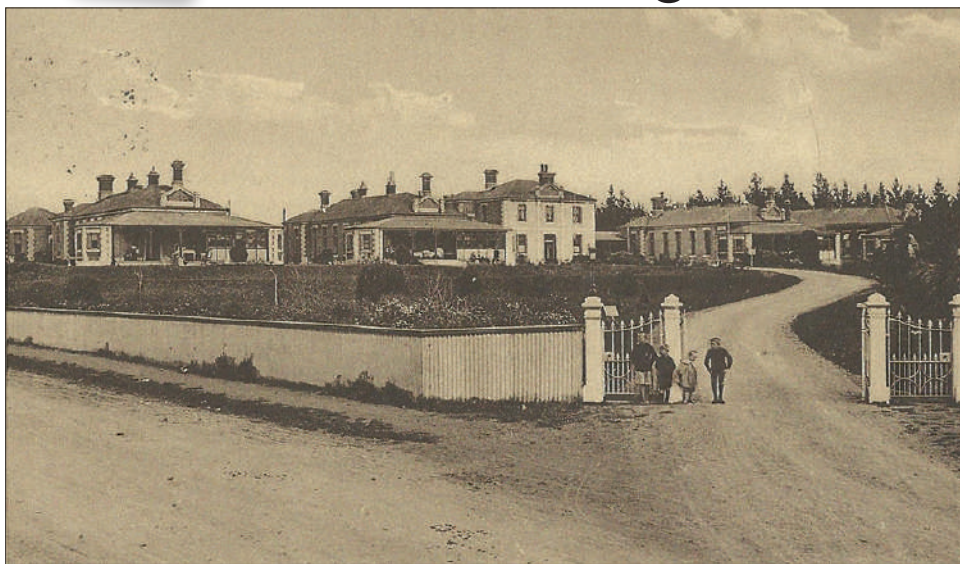
Hospital services, however, pre-date them both, with missionary Rev Richard Taylor setting up the first hospital at Putiki in 1844, with Dr George Rees appointed its Native Medical Officer that year.

This was followed by military hospitals at the Rutland Stockade, built in 1847 and in Ridgway St (1849) and, then by the Colonial Hospital built in St George's Gate by the river, which opened with 26 beds. The present Whanganui Hospital site, covering 33 acres, was bought for 800 pounds, and the facility was opened by New Zealand Prime Minister Richard Seddon on March 12, 1897.

It comprised three wards, 68 beds and a two-storeyed administration block and in the more than 120 years since it has continued to expand and develop to encompass a vast array of services.

On Saturday, August 10, to mark its long history and celebrate Whanganui Heritage Month, the public will be able to follow the story of the hospital through a tour of the main corridors, featuring a series of historic photos.

It is a free tour, on offer between 10am and 2pm and there will be volunteer guides to assist.



Whanganui Hospital was opened in March 1897.



Christmas Day 1903 in Victoria ward at the Whanganui Hospital.

Linda Harris

Proudly supporting our community

Property
Brokers

List and sell your property
with me and I will donate
\$500 to Rangitikei College*

1

List your property or refer
a property to me.

2

Be sure to mention
Rangitikei College.

3

When the property
sells, I'll donate \$500
to Rangitikei College.

It's
that easy!

Linda Harris
Residential Sales Consultant
M 022 650 9301
P 06 327 7458
E linda@pb.co.nz

pb.co.nz
Property Brokers Ltd Licensed REAA 2008

*Conditions Apply

BITS n' PIECES



Art 4 Arts Sake - 16 - 30 August... Bulls Town Hall. Daily 10am to 4pm, with free entry. Artists entries close on 8 August. Contact Heidi Macaulay 0211745951 - bulls.community@xtra.co.nz

Mitre 10 Ladies' Night - Thursday 12 September, 6-8pm. Save the date ! More details soon.

RDC is hosting a meeting at Awastone at 5.30pm on Monday August 5 to consult with the community on the future of the Mangaweka cantilever bridge.



RANGITIKEI WHEELIE BINS

- Kerbside collection
- Weekly or fortnightly
- Commercial pickups



Locally owned and operated

Phone 06 327 8336 or 021 477 814

KNITWEAR CLEARANCE SALE

100% Woollen Jersey

Manufactured in MARTON

By Bary Knitting Mills, Hair St, Marton

Fashion Styles
Work Jersey
Casual Heavy Weight
Sample Lines

PRICES FROM \$35 to \$85

Enquire at
Spic & Span Dry Cleaners

To see large range go to Bary Knitting Mills
Selling Hours

Wednesday 1pm - 4pm

Thursday 1pm - 4pm

Friday 1pm - 2.30pm



100% New Zealand owned and locally approved

**BIN
HIRE**

Bin Hire Specials

Various sizes from 1.8m³ - 9m³



Prices may vary beyond Marton boundary
Weight limits apply

Please contact us now to discuss your requirements

Phone 06 324 0693

0800 424 990

www.smartenvironmental.co.nz

VIEWPOINT

Letters to the editor - 200 words. Include name, address and phone number.

Thank you Whanganui Chronicle for alerting us all to the toxic 1080 poison dumping at Bonny Glen Landfill near Marton. Instead of monitoring this landfill like hawks - it would appear that our own local & regional council have been caught fast asleep at the landfill gatestoo exhausted by their own empire building and self-importance!

With a manufacturer's warning label of "acutely toxic" and "danger, deadly poison", no wonder that this poison was trucked and dumped 1000 kms from its South Island base. as you read this - just imagine all of the vital earthworms & essential soil invertebrates dining on this highly toxic, deadly feast - the underground ecology of Bonny Glen destroyed.

To all Bonny Glen residents - please order our reckless councils to dig up this acutely toxic mess ...and then sanction your own 1080 aerial poison drop - dumping it right on top of the govt owned toxic poison manufacturing plant "Orillion" (Heads Rd, Whanganui) where it belongs!
Clare Wishart, Marton.

CLUB SCENE

Marton Women's Institute

We have had a busy first half of the year, with an interesting programme for the winter months, including outings, activities and learning new skills. The cooler weather is a good time to socialise and a 'soup and bun' lunch meeting is planned for this coming Monday 5 August. Visitors will share with us in a 'Bottle Auction' with funds going to Medical Research which NZWI support. Our guest speaker is Ali from NZ Yoga Centre. We can try our luck at winning the Garden raffle and the Trading Table Will Provide us with something exciting to take home.

Handcrafts, cooking, gardening, guest speakers, friendship and community support are a part of what we enjoy and share. You are very welcome to come and check us out on Monday at 11am at the Friendship Hall, Morris St, Marton.

Thank you for taking an interest in our WI and the time to read our report. Contact Jean 327 6460 or Gillian 327 7352.

Happy Tours of Marton

Winter chills caused our numbers to be down on our last trip but 33 people had a great time in wonderful Woodville. It was another full-on day and the weather was gorgeous with our first visit being to the Pioneer Museum, then lunch and something retail therapy in some very fabulous shops. The afternoon had us visiting the Woodville Reed Organ Museum and what an amazing collection of organs, in all shapes and sizes. We were even privy to a super demonstration and a singalong.

Thanks to Betty D and Lois for our super raffles which were won by Jean P and Pearl.

Our next trip is Thursday 8 August when we will be heading to Wanganui for the day, the first stop is at the Wanganui District Council chambers where we will have a cup of tea or coffee and then view The Whanganui Story as told in their beautiful stained glass windows. This tour takes approx an hour and a half. We will have lunch at The Brick House where the meals are lovely and so reasonably priced. Our afternoon is a surprise or two but it will be something that everyone can manage to do.

Bus departs from Criterion St in Bulls at 9am and will pickup passengers in Marton at the Memorial Hall around 9.15am, returning by 4pm.

For those club members who weren't at the luncheon in June please remember your sub is due for payment. I hope you have booked your seat for this trip.

Rangitikei Country Music Club

It's been a bit chilly lately and it's hard to drag ourselves away from the heater so thanks to all who attended our club day. We had a wonderful, friendly, relaxed day- lovely atmosphere. Our happy chappie, lead guitarist Derek Wilson, has a very relaxed style of playing and along with other band members, Sue, Boss and Glynis, form a capable group which creates a pleasant sound for our singers and audience. Our entertainers

are presenting us with some new songs mixed with the other familiar songs, very enjoyable entertainment. We are pleased to hear Rosemary is on the mend, after a couple of weeks in hospital. Thanks to Yvonne and Derek for donating us a new heater. We will all be hot stuff now. We welcomed Pauline Dillon and Lyne Neary a couple of weeks back and nice to see them return. We thank those who assist with all those jobs that need doing on club day, which make our club the success that it is. Club days are on the first and third Sundays at 1pm at our clubrooms – 421 Wellington Rd, Marton. For information ph Glynis 06 327 6626 or Marlene 06 327 7135.

Marton Friendship Club

Friday 26 July – a very good attendance today, musical entertainment is always popular. Today the Unity Singers from Palmerston North – a group of about 11, plus an excellent pianist. We had quite a variety of tenors, their voices combined with the rest of the group made lovely harmony, a real pleasure to just sit and listen. Sue gave us a solo – Happy Talk. It was and from the musical South Pacific, (tuppence a bag) Feed The Birds from Mary Poppins and What a Wonderful World and so many more. This particular group and our men's choir from Feilding, next week, are really magic and not to be missed. So, don't forget this Friday, another professional afternoon and real fun. Lunch time 12.30pm to 2pm and then our main programme. Raffles this week won by Deana Scarbrough, Vic Byatt, Thelma Lockwood, Jean Turner and Pamela Murphy. Special monthly raffle won by Sheila Clark, Maureen Karl and Wendy Lee. Another birthday trip to Palmerston North Seniors coming up on August 20, so if you want a ride, you must let us know. See you all on Friday. Visitors welcome. Our entertainers will be The Crochets.

History of Bulls business on display

Bulls Museum has a new exhibition for the next three months. It features the history of the Bulls business community and presents photographs of shops and business premises such as the demolished Criterion Hotel and Clifton House Furnishing company which now houses of the Bulls RSA. Bulls Museum treasurer Tony Simms is pictured studying some of that long business history. Also displayed is a sign Tony found from Rangitikei Marine, a former boating business that was part of the Bulls scene for decades. Bulls Museum is open 7 days from 1am – 3pm.



NAVY PIONEER TAKES HELM OF RNZRSA BOARD

She was the first woman to serve at sea in the Royal NZ Navy. Breaking new ground a few years later, she returned from maternity leave to become the NZ Defence Force's first part-time working parent. And, when she was appointed Commander of the Devonport naval support base, HMNZS Philomel, it was another female first.



Now, more than 35 years after beginning her military career, Captain Corina Bruce (pictured), career servicewoman, leadership specialist, software engineer, executive and entrepreneur has just been elected chair of the Royal NZ Returned and Services' Association board – again, as the first woman to hold the role.

Ms Bruce, who joined the RNZRSA board in 2015, says her appointment as chair is an immense honour but one that comes with significant responsibility, as the organisation adapts to a future that is very different to its past.

"I see one of our key priorities is to broaden the understanding of the RSA movement. It's powerful and unique support that can't be offered by other agencies – it's comrade helping comrade, from a place of true knowing and understanding, and without judgment. It's literally life-changing. Work was already underway, as part of a modernisation strategy, to adapt the RNZRSA's model to ensure it is financially sustainable and structured to meet the changing needs of serving and returned military," Ms Bruce says.

Have you been photographed by us ?

Order a copy of your own
from

Rangitikei
DistrictMonitor



Phone us, email us or call into our office at
355 Wellington Rd, Marton

Phone 06 327 7881: email districtmonitor@xtra.co.nz

Real Life Therapy by Shirley Henderson

You are your own pattern

Over the years, as a massage therapist, I have developed my own understanding of muscles and how they work together in our bodies. Imagine that muscles are similar to the weave in fabric - they all interlock and, when working well, they are smooth bands running in both directions. Each muscle has its own unique pattern. They are all joined and the optimum for our body is when they all work together. Now, we all know what happens when we take fabric and ask too much of it. Say we stretch it too far, we catch it and pull the fibre or we accidentally rip it. Sometimes we can mend it, sometimes it bounces back by itself but sometimes the damage is permanent. The muscles in the body are the same. Our bodies are amazing. Physically, muscles will do all they can to repair themselves. If we give them the care and attention they require, they will do their best to fix themselves. Unlike fabric however, our bodies also respond to emotional pressure. The knots you feel in your shoulders or the pressure between your shoulder blades can be muscles working too hard but we put emotional pressure on our bodies too. Every muscle group in your body is as important and special as you are. Muscles rely on each other to allow us to function. If one part is compromised it effects the rest. You are a beautiful, complex weave of all that has been, all that you are learning and all that will be. Treating the muscles is a great start... but please ensure that you treat your 'entire self' with the love and kindness you deserve.

Shirley Henderson Massage & Hypnotherapy

• Professional • Experienced • Confidential

I can help with...

- Stress & Anxiety relief
- Fears, Phobias & Habits
- Smoking & Addictions

CLINIC IN BEAUTIFUL BULLS

Senior Professional Clinical Hypnotherapist

Remedial and Relaxation Massage Specialist

BY APPOINTMENT ONLY

Call Shirley 06 356 4871

text 027 269 0655

Carey's Joinery has made a significant investment that allows them to produce kitchens more quickly and to a higher standard than in the past. The Homag pre-milling edge bander, produces high quality edging to timber, pvc or high pressure laminate boards and shelving, used in cabinet construction for kitchens, laundries etc.

All boards they use are moisture resistant. "The Homag produces an edge finish that is second to none," says Carey's owner Shaun McDowell. "We can now work on producing up to three kitchens at a time. We are only restricted by workshop space."

Carey's Joinery has been in business since the start of the 20th century. Shaun joined the business in 1999, became a partner in 2003 and took over completely about seven years ago. He employs three others, including joiner Emma Clark. Shaun is on the lookout for extra workshop staff, preferably a qualified tradesperson, but he will train an apprentice joiner if he can find the right person. Carey's specialises in kitchens, laundries, vanities, stairs and wardrobes. Shaun says, "We have other new machinery in the pipeline. Our aim is to invest in upgrading our business wherever we can."

So, if it's a quality kitchen you want, get on down to Carey's Joinery where Shaun and the team will provide friendly, professional advice on all your joinery requirements.

Marton joinery business 'future proofing' investment



Emma Clark and Shaun McDowell using their new Homag edge bander, to apply a laser edge to what will become part of someone's new kitchen.

Carey's Joinery

Shaun McDowell

Serving the
Lower North
Island for over
100 years!

Kitchen Fittings
& Design



Ph/fax: 06 327 7949 Mob: 027 244 8866

Email: careys.j@xtra.co.nz



RANGITIKEI LINE BULLETIN

Pre-election report

Rangitikei District Council's pre-election report for 2019 is now available on the website and in Council offices and libraries. The Local Government Act requires every council to prepare and make available such a report and prescribes the information which it must (at a minimum) contain. By outlining the issues Council faces and its financial situation, the report is intended to help voters and those standing for election make informed decisions. It is prepared by the Chief Executive and must be politically independent.

Manatu Whakaaetanga – Memorandum of Understanding between Te Rūnanga Ngā Wairiki-Ngāti Apa and the Council

The Rūnanga has identified the Council as a strategic partner in the development of the former Turakina Maori Girls College property, at 85 Hendersons Line, Marton, which the Rūnanga purchased in 2018. The site, now known as Te Poho o Tuariki, offers a unique opportunity to establish a base for regional economic, education/training, social cultural and environmental development initiatives.

The Manatu Whakaaetanga signified that the Rūnanga and the Council will work together with a view to leading, planning and establishing collaborative initiatives including training and employment-related programmes and services delivered from Te Poho o Tuariki.

A formal signing ceremony will be scheduled soon.

Ngati Rangi Settlement Bill

On 25 July 2019, the Bill passed its third reading in Parliament, meaning that, following Royal assent, it will become law. Council is an affected party in Part 3 of the

Deed of Settlement – 'Te Waiū-o-Te-Ika – Whangaehu River', which notes the establishment of Ngā Wai Totā o Te Waiū, a joint eight-member committee of Horizons Regional Council, Rangitikei and Whanganui District Councils (who will each nominate a member) together with members nominated by trustees of Te Tōtarahoe o Paerangi, Ngāti Apa, the Uenuku Charitable Trust and the Whanganui Land Settlement Negotiation Trust. The Committee's purpose is to advance the health, well-being and integrated management of the Whangaehu River catchment.

State of the Environment Report

Following consideration by the Policy/Planning Committee, Council has adopted the State of the Environment Report – a review of the efficiency and effectiveness of the District Plan. The focus of the review (required by the Resource Management Act 1991) was subdivision, dwelling intensity, dwelling proximity, the residential zone, natural hazards, noise rules, regional environmental issues and any matters under consideration for the next District Plan Review. The report is available on the Council's website.

As Council is currently undertaking a District Plan Change, some of the recommendations in the report will be considered for inclusion in the second stage of that work. The remainder will be progressed through the next review of the District Plan.

District Licensing Committee

Also at its meeting on 25 July 2019, Council approved the annual report of the Rangitikei District Licensing Committee. This report, available on Council's website, is a legal requirement and provided to the Alcohol Regulatory and Licensing Authority. During the year 24 licence

applications, 49 managers' certificate applications and 47 special licence applications were received. The District has 17 licenced clubs, 18 on-licence premises and 12 off-licence premises.

Economic Development Strategy

The 2018-28 Long Term Plan noted that Council's intended involvement in economic development. Over the past few months, an economic development strategy has evolved and was adopted on 25 July 2019, following further discussions with Council, Iwi and business groups. There are four strategic themes – business development, district promotion, training and education and housing development – with actions identified for each.

New Bulls Community Centre – progress with construction

Work on the Bulls Community Centre has steadily progressed. Progress during the past month by on site trades is: steel beam installation, precast beam installation, reinforcing steel installation and concrete pour on the second floor are complete; all columns have been filled with self-compacting concrete; drainage for the basement is complete (and in progress for the remainder of the hall); the framing for the ground floor is in progress; the north and south pavilion structural steel roofing is being installed, and progress is being made with ducting for domestic water and power supply across Criterion Street.

The community house, the product of such much assistance from volunteers and local businesses, in Walton Street is nearly complete. It is intended to auction it late August/early September, with the proceeds going towards the new Centre.

HEALTH SCENE



Health board heads to Taihape to get the rural perspective

A growing commitment to rural health is reflected in Whanganui District Health Board's decision to take its August board meeting to Taihape.

The meeting is on Friday, August 9, at Taihape Health Centre on Hospital Rd, and the local community is invited to come along and meet board members.

"Whanganui District Health Board is committed to rural health, and meeting in the rural parts of our catchment area ensures the board is aware of issues facing our rural community," DHB chief executive Russell Simpson says.

"The local context will provide an understanding that will enable improvements in planning and service delivery for those who reside outside the urban boundary of Whanganui."

Morning tea will be provided and the board will be available to discuss local issues with the public from 9.30am to 10am. This meeting, like all board meetings, will be open to the public. It will be the first such meeting in Taihape for approximately 10 years, going back to the closure of the hospital there.

"Our region is made up of approximately 20,000 people who live in the rural outreaches, and it is important our board ensures the communities within these reaches have input into the health needs we provide to them," Simpson said.

Taihape Panel Call Us Before You Call Your Insurance Company

**Vehicle Insurance/Rust Repairs
Assessments for all Insurance Companies
Courtesy car available**

Contact Earl Rae
06 388 1605 or 022 073 3011



FOR ALL YOUR TRAVEL
NEEDS CONTACT
NIGEL BUCK 06 388 1008



helloworld Taihape 108b Hautapu St
taihape@helloworld.co.nz

READ THIS PAPER ONLINE

www.districtmonitor.co.nz

Rangitikei

DistrictMonitor

Phone: 06 327 7881

stories /reports

-districtmonitor@xtra.co.nz

adverts - monitoradvertising@xtra.co.nz

Ruapehu tourism announcements exciting for economic growth in Manawatū-Whanganui Region



The new Whakapapa Sky Waka Gondola on Mt Ruapehu

The Accelerate25 team see last Friday's (July 26) opening of the Whakapapa Sky Waka Gondola on Mt Ruapehu as incredibly exciting for tourism in the Manawatū-Whanganui region.

The project has moved swiftly as just over one year ago, central government's Provincial Growth Fund committed \$10 million in funding for the Sky Waka build. This, in conjunction with the Tuwharetoa Trust contribution of \$9.5 million to the \$25 million project, allowed this major infrastructure initiative to go ahead.

Under secretary for regional economic development, Fletcher Tabuteau was in attendance for the grand opening on the mountain. While there, Mr Tabuteau announced Provincial Growth Fund grants totalling \$550,000 to support the Ruapehu District Council long-term planning to foster sustainable tourism growth.

Accelerate25 lead team facilitator and Horizons Regional Council chief executive Michael McCartney is thrilled with Friday's announcement. He says, "These opportunities are very exciting and we welcome Mr Tabuteau's announcement."

Tourism in Ruapehu is a strategic priority for Accelerate25 and we commend the work by central government, Ruapehu district and its communities, in further developing these particular projects."

It's anticipated this project will create a further 150 jobs, and boost tourism across the central North Island by 500,000 people annually, by 2025 while its forecast to double regional tourism income to \$400 million a year, by 2028.

Ruapehu District Mayor Don Cameron can already see the economic benefits of the Sky Waka coming to fruition.

"The Whakapapa Sky Waka Gondola is a success story and is already delivering on its promise of increasing visitor numbers and with it, greater prospects for economic growth," says Mayor Cameron. He is also thankful for the opportunities the new Provincial Growth Funding announcements will provide. "This new funding will help us to unlock further regional tourism opportunities, as identified in the visitor development and Accelerate25 action plans, while ensuring we do so in a planned way, that protects our precious environmental and cultural taonga," he says.

Guy's pragmatism appreciated by Federated Farmers

Farmers regarded Nathan Guy as a pragmatic and knowledgeable Minister for Primary Industries.

The MP for Otaki who, among other roles, served two years as Associate Minister of Primary Industries and four as Minister in the John Key-led government, has announced he will not seek re-election in 2020.

"His door was always open, and he was always level-headed and considered in his dealings with people," Federated Farmers president Katie Milne says.

"He had his finger firmly on the rural pulse and I always appreciated that you could have free and frank discussions with him, including occasionally by phone when he was out helping weigh and drench calves. He has real empathy for the sector and for the wellbeing of rural communities."

When the Land & Water Forum was advocating for what farmers considered overly-ambitious rules on stock exclusion, Guy stood firm and was realistic about what would work in practice," Milne said.



RANGITIKEI HISTORY



C S Capill's truck taking children to the carrier's picnic in Taihape in 1931. C S Capill was a general carrier and wood, coal and coke merchants for Taihape and district. Photo from the Taihape Pioneer Museum archives.

"Biosecurity was one of his priorities and he began beefing up border security, a task that the current government has continued." Former Federated Farmers president William Rolleston said Guy got through the Government Industry Agreement for Biosecurity Readiness and Response.

"The GIA framework not only puts farmers and growers in the decision-making room but, when dealing with outbreaks such as Mycoplasma bovis, mitigates the amount of cost that falls on farmers, and ensures exacerbators bear some of the costs as well."

"He also listened to farmers on climate change and his approach was pragmatic and workable," Rolleston said.

"Federated Farmers wishes Guy well in his future endeavours."

Winter Gardening

by Wally Richards



NEW SEASON COMING

Signs are, we are already into a early spring season this year, after coming out of a milder winter.

I remember the words of another garden writer who has since past saying, "Beware of early spring plantings as in some seasons, winters tail has a nasty backlash."

Weather patterns have certainly changed. Years ago it would have been considered foolish to plant anything other than the most hardy plants before Labour Weekend. tart early, take advantage of the milder weather but only with a few of the tender plants so, if all goes well, you will have some early harvests. If there is a late, cold break and frosts you have not lost too much.

Good advice and getting a few tomato plants in early, is good value but others that need more heat such as cucumbers, should be left for a bit later on.

All the signs of spring are here, with garden centres displaying roses, fruit trees and hardy seedlings. Buds are swelling in deciduous trees and plants, so ensure that any prunings is done soon.

Recently, I received two mail order seed catalogues with their offerings of many varieties of plant to grow this year.

The two catalogues are from Egmont Seeds and Kings Seeds with offerings of many more types of plants than would be found in an instore seed stand.

I know that when I had a garden centre many years ago I used to stock the full range of Kings Seeds which took up an entire wall of the shop. So - not very practical for most garden shops.

I always like to look at new varieties that are on offer and if they appeal to me I will try them out.

I see Egmont Seeds has purple carrot seeds available. I have seen these carrots in the green grocers at times and even tried to grow one to obtain the seeds. (Sometimes you can put a harvested root vegetable into the soil and it will start growing again and then go to seed).

Caucus carota (Purple carrot) deep coloured

vegetables, with antioxidants, great for repairing and preventing cell damage.

Egmony also has a new double red petunia: beautiful, red double blooms with the occasional splash of white around the tips. The unique double flowers feature a delicate fringe.'

A neat new tomato called Tidy Treats provides lots of fruit power for small-space gardens and containers. Unlike other patio types, it continues to produce tomatoes all season.

It's ideal for containers, as well as garden planted with cherry sized fruit, spaced out on a long truss. A container plant for the table is eggplant Patio Baby: cute, glossy baby eggplants. Fruit size is approx 5-8cm. Best grown in pots, baskets or planters.

New offerings from Kings Seeds includes: Aquilegia Pink Petticoats -tall and decorative pink aquilegia with layers of white pleated petals giving the impression of petticoats. It's great in shaded areas alike. I always love those granny bonnets.

Watermelon, Gold in Gold, F1 hybrid: 2017 AAS award winner. Beautiful yellow with gold striped skin, orange gold inner flesh that is crisp and very sweet. Vigorous, disease resistant plants, are early to produce 5-7kg crack resistant, oval fruit with a thick, strong rind.

A novel one is soya bean Sonya: easy to grow soya bean rewards with a bumper harvest of pods.

For those wanting to get started germinating seeds, I recommend a heat pad to assist and once a show of young foliage appears make sure seed raising container is placed where the seedlings will receive natural, overhead light. Germinating your own seedlings is one of the most satisfying aspects of gardening.

Problems: ring me at 0800 466464 (Palmerston North 3570606).

Email wallyjr@gardennews.co.nz

Website www.gardennews.co.nz

Therapy for relaxation and healing



Sally McDonald (left), recently qualified Bowen Therapist, receives her diploma from instructor Gay Jarvis, in Sally's Neumans Line clinic.

Considered appropriate for all ages, Bowen Therapy is a treatment that uses subtle moves to activate nerve impulses and stimulate the relaxation and natural healing response of the body.

It can be performed through light clothing and is a gentle, non-invasive form of therapy, enjoyed by many people to support optimal health and well-being.

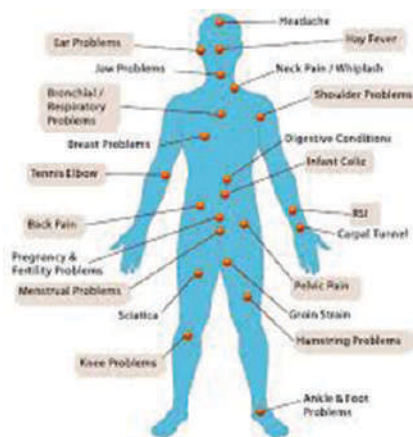
Sally McDonald of Marton has completed 2 ½ years of training and qualified as an accredited Bowen Therapist. She has set up a clinic in her Neumans Line home and is 'open for business'.

Bowen Therapy can be suitable treatment for a wide variety of body pains and issues, and "is ideal for maintaining a healthy body balance," says Sally. "We get our car tuned regularly," adds Sally, "Bowen is a great way of giving our body a tune-up!"

Developed in the 1950s in Australia, Bowen Therapy has over 25000 trained therapists, worldwide.

In today's fast paced environment, relaxation is often forgotten about amid the pressure of everyday life. The Bowen technique aims to support a deep sense of overall relaxation, leaving you feeling lighter and freer.

Sally has had positive feedback from those she has treated to date and looks forward to expanding her client base. Contact her by phone or email, if you want to learn more or book an appointment.



INTERNATIONAL HOODYS & TEES



\$89.95



\$34.95

NEW ZEALAND - TONGA - SAMOA

GET YOURS NOW IN TIME FOR THE RUGBY WORLD CUP

McGruer's
McGruers (Marton) Ltd.

Broadway Marton PH 06 327 8592

BOWEN THERAPIST



Registered Professional Member
BOWENTHERAPY
NEW ZEALAND®

Sally McDonald
Neumans Line, Marton
027 600 3014

Email: sallymcdonald8@gmail.com





ST FRANCIS INDOOR BOWLS

30 July; this week was a normal club night. We played two games of 9 ends, with the only team to win both their games - Ray Harding and Andy Creagh. Bev Toulmin won the raffle. Next week, we are playing our club mixed pairs tournament. It will be a 7pm start. We hope to see you all there.

8-BALL POOL

Wednesday 24 July saw mixed fortunes for Rangitikei sides in the Wanganui interclub pool competition. Bulls RSA hosted Club Metro and went down 13-8. The singles rounds were decisive: the visitors winning 9 matches to 3. Only Bob Bligh (2) and John Fraser (1) recorded wins for Bulls. Needing to win 8 of the 9 pairs clashes, the home team could only manage 5 victories. Winston Holdaway & Carole Hunt won 2 of their 3 matches, as did Tracey Holdaway & Bligh. Marton travelled to Wanganui, where they took on St John's Wahine. Winning the singles 10-2 and the pairs 7-2, Marton recorded a comprehensive 17-4 victory. Graham Marshall, Stephen Lewis, Peter Lissington and Ray Butler all had 2 wins from 2, in the singles and the Butler/Lewis combination won all 3 of their pairs matches.

MARTON 9 HOLE GOLF

Thank you all the visitors who joined us to play a par round on 23 July. Results were: 1st division: 1st Phil Simpson +3, 2nd Bryan Hamerton +1 c/b 3rd Terry Hammond +1, 4th Steve Muir sq. 2nd division: 1st Tim McVerry +2 c/b, 2nd Dave McDougall +2, 3rd Roy Powell +1 c/b 4th Sam Atkinson +1. 3rd division: 1st Adrian Penning +7, 2nd Marg Linklater +1, 3rd Barry Williams sq c/n, 4th Judy McConachie sq. Lucky card winner: Mike Donlan. Raffle: Jill Bryant. The damp weather prevented a few players from joining in on Tuesday 30. Results were: division 1: 1st Brian Shaw 38 c/b, 2nd Bryan Hamerton 38. Division 2: 1st Dave McDougall 31, 2nd Barry Florence 34, 3rd Mike Donlan 35. 3rd division: 1st Jan Cook 38 c/b, 2nd Adrian Penning 38. Lucky card winner: Barb Crawford. Raffle: Neil Powell. Next week's starters: Tim Brandon & Beryl Higgie. Cards: Neil Powell & Brian Willis. Kitchen: Mona Barrett.

RANGATIRA GOLF CLUB

13/7/19: men - medal: S Martin 68, P Guthrie 69, C Renshaw 69, D Graham 70, J Bismark 71, G Eldridge 72, W Lampp 72. Twos: H Lilburn. 20/7/19: members' tournament; Sat: B Callon 68, M Walshe 68, R Wilson 69, J Cooper 69, J Holden 69, A Bonnor 70, A Lock 71, L Worsfold 71, S Martin 71, G Eldridge 71, B Barrell 72. Twos: D Graham. Morgan rosebowl: M Walshe and B Callon. 21/7/19: members tournament; Sunday: A Bonnor 66, C Leary 67, D Graham 67, R Lambert 68, B Callon 68, H Lilburn 68, D Hitana 69, M Walshe 70, W Lampp 70, M George 71, J Holden 71, B Dickinson 71, D Silk 72, G Eldridge 72. Twos: R Nimmo, N Martin, G Eldridge. Wheel Rosebowl: A Bonnor. 24/7/19: women: J Ross bracelet, NZGMC spoon: J Alabaster 71, L Worsfold 71, L Leary 72, D King 72, J McAlley 73, M McAlley 73, R Rainey 75, J Griffiths 76, F Robertson 79. Twos: M McAlley. 24/7/19 9 hole stableford: R Florence 16, D Gregory 16, T Doorey 13.

HAWKESTONE GOLF CLUB

Tuesday 23: Rome Hair Salon medal competition: Matt Carroll & Glenn Stanton 32, Grant Forbes 37, Greg James 37, Jan Van Loo 38, Les Neumann 42, Rae Karatea 44, Joy Stantiall 45. Nearest pin: Greg James. Lion challenge: Jan Van Loo. Saturday 27: Central ITM captains' trophy stableford competition: s/men: G Bond Stanton, R Geary & D Rohde 40, G Franks & G Forbes 39. G Cunningham 38. J/men: M Carroll 44, J Hill 42, D Worsfold jnr 41, N Rackham 40, M Pickford & G Edwards 34. Women: S Wells, D Todd, P Charlesworth. Feilding Scrap Metal two's: R Geary #5 & #11, L Moore #11. Jackpot #16 not struck. Nearest pins: s/men: G Forbes. J/men: not struck. Women: not struck. Taimui challenge: Matt & Norm bt Dave R & Rex. Next challengers: Pinky & Geoff. Coming events: Tuesday 9 hole golf: 9.30 am tee off. Saturday: 3rd club champs - matches up to date - teeing off from 11am. July month end nearest the pin jackpots to be struck. Visitors and casual golfers play 9, or 18 holes for only \$10. New members: please enquire to hawkestonegolf@gmail.com about our membership rates. All welcome. Other enquiries: contact Grant: 0210 572 931.

RANGITIKEI GOLF CLUB

Results from Wednesday 24 July - stableford competition: Ron Harris & Dan Scotson 42pts, John Luckham 41pts, Marty Field & Trevor Schroder 39pts, Bill Ward & Dave Fitzpatrick 38pts, Pat McCarthy & Ian Whitehead 37pts, Peter Young, Colin Southey, Lyndon Moore & Al-lek White 36pts, Warren

Public Notices

Taihape & Districts A&P Show

AGM

12 August, 7pm, Council Chambers, Town Hall

All are welcome.

Any enquiries contact Emma 021 2120 756

Marton Development Group Incorporated

Annual General Meeting Notice

You are cordially invited to attend the inaugural Annual General Meeting of the Marton Development Group, Wednesday, August 14 2019 at 6.30pm at the Centennial Park Clubrooms, Totara Street, Marton.

Raffle Results

Marton RSA Raffle Results

- 1 - No 3088 - M Evans
- 2 - No 3348 - Caroline Watson
- 3 - No 2798 - Martin
- 4 - No 1286 - Sandra Scherrer
- 5 - No 3322 - Lynette Andrews
- 6 - No 2878 - Cam
- 7 - No 1045 - Karen & Darin Galliers
- 8 - No 1543 - Maureen Karl
- 9 - No 3215 - Betty Davis
- 10 - No 3198 - McDonald Family
- 11 - No 2584 - Anton
- 12 - No 1927 - Rae Linklater
- 13 - No 3235 - Marshall

Sincere thank you to all our supporters.

Ralph and Jim.

Jordan & Geoff Ingram 35pts, Rex Wilson & David Rohde 34pts, Ash Reed, Cynthia Luckham, Henry Potaka & Pat Pearce 33pts. Twos: Henry Potaka & Syd Hawikai 3rd, Jason Bowles 12th, Bill Ward, Pat McCarthy 16th & Al-lek White 12th & 16th. Best stableford on 12,13 & 14 was Colin Southey: 9pts. Lucky draw: Joe Yorke. Saturday 27 July - par: seniors: Peter Thompson +4, Jordan Wells +2, Geoff Ingram +1, Hone Morris -1, Alan Wix & Graeme Stephens -2. Juniors: Al-lek White +9, Dan Scotson +5, Ash Reed +2, Andrew Richardson +1, Edith Leary & Steve Boyens sq, Peter Young & Bill Ward -2. Twos: Al-lek White 3rd, & Alan Wix 12th.

MARTON GOLF CLUB

25 July: Thursday club. Newcomer to the Thursday club, Simon Mitchell collected his first winnings, even if it was only the Crunchie bar. Well done Simon. Top scorer of the day was Brian Mc Ginniss, with 37 points, taking out the top money. Scores: B Mc Ginniss 37, D Clark 34, B Beck 34, P Simpson 33, T McVerry 33, D Angove 33, A Stewart 32, H Bremner 31, G Velvin 30, P Connolly 30, S Muir 30. Sat 27 July: another good turnout of players entered the medal round, with Steve Muir's nett 66 being the best score, winning him the G K Skou Transport voucher. Other results: Dick Fullerton-Smith, Adrian Duncan 70, Calvin Field, Hugh Bremner 71, Shay Melis, Tim McVerry 72, Stu Amor, Tony Mischewski 73, Phil Simpson, Barb Pratt 75, Bryan Cameron, Caroline Watson 76. 5FBH: Les Wake, Alan Bates, David Green, Campbell Bary, GV Calkin. Twos: 3rd Jenny Ritchie, 6th Jack Waller, 17th Shay Melis. The 12 ball jackpot was struck. Sat 3 Aug; duty: Rodger Yorke. Bar: John Furness & Bruce Craig. Sun 4 Aug duty: Adrian Duncan.

MARTON LADIES' 18 HOLE GOLF

Wednesday 24 July. Par Cup. Division 1; G Burne -1, A Bary -3 on count back from M Simpson -3. Division 2; L Belsham +4, H Wilton -1, M Hunt -3. Twos: A Bary 6th, M Hunt 3rd, M Simpson 17th - the Kevin Jensen sponsored hole. Sponsored ball: A

Public Notices



RANGITIKEI
DISTRICT COUNCIL

Making this place home.

Availability of reports

The following reports, adopted by resolution at Council's meeting on 25 July 2019, are available on Council's website:

Annual report of the District Licensing Committee, to 30 June 2019

(as required by section 199(5) of the Sale and Supply of Alcohol Act 2012)

State of the Environment Report – a review of the District Plan Efficiency and Effectiveness

(as required by section 35(2A) of the Resource Management Act 1991.

Ross McNeil
Chief Executive



RANGITIKEI
DISTRICT COUNCIL

Making this place home.

Time to Apply for Council Grants!

Creative Communities Scheme – Opens 24 July 2019

The aim of the scheme is to increase participation in the arts at a local level and to increase the range and diversity of arts available to Rangitikei communities.

Last round's successful recipients were: Bulls and District Community Trust, Little Dog Barking Theatre, Marton Country Music, Taihape Community Development Trust, Project Marton Inc, and the Marton Arts and Crafts Centre.

Applications close 23 August 2019

Community Initiatives Fund– Opens 24 July 2019

This fund is open to all initiatives and opportunities that have potential to benefit the District's communities. Last round's successful recipients were:

Wanganui Area Neighbourhood Support Groups Inc, Bulls and Districts Historical Society Inc, Marton & District Historical Society, Te Rūnanga o Ngāti Hinemanu me Ngāti Paki ki Mōkai Pātea, Rangitikei Branch of the Royal Forest and Bird Protection Society, Marton Country Music Festival and Project Marton Inc.

Applications close 23 August 2019

Event Sponsorship Scheme – Opens 24 July 2019

This fund supports 50% of the cost of events that help develop community cohesion and reinforce economic growth within the Rangitikei District. Last round's successful recipients were: Marton Golf Club, Sport Whanganui, South Makirikiri School, Bulls Junior Rugby Club, Taihape Community Development Trust, Marton Music Society, St Andrew's Presbyterian Church Marton and Project Marton Inc.

Applications close 23 August 2019

For further information, please visit the Council's website:

<https://www.rangitikei.govt.nz/district/community/grants-funding>

To apply for any of the above funding programmes, please visit Council's funding website: <https://rangitikei.smartygrants.com.au/>

For any additional information, or queries please phone the Council on 0800 422 522, or e-mail: info@rangitikei.govt.nz

Diabetes Support Group

Recycling Soap Scraps

Saturday 3 August, 2pm

Friendship Hall, 7 Morris Street, Marton

For further information, please call 06 327 7281 or 021 342 524

(supported by funding from Rangitikei District Council)

Rangitikei DistrictMonitor

LOCAL SERVICES

Support Local Rangitikei Businesses



MARTON LAUNDROMAT
SELF SERVICE 5AM - 11PM
SERVICED 8AM - 5PM
ASK ABOUT OUR ELDERLY RUN: TUESDAYS.
06 327 5569. LOCALLY OWNED.

Thinking Real Estate?
Call Carol Lewis or Mike Lewis
0800 627 866



AIPOSE Limited MRENCZ | 06 355 4324 | 165 Broadway Ave | Licensed Under the REAA (2008) | Each Office Independently Owned and Operated

CENTENNIAL PARK DAIRY
OPEN 7 DAYS 7am - 7pm



176 BROADWAY, MARTON
PH 06 327 7398

COBHAM PLUMBING AND DRAINLAYING



LOCAL SEPTIC TANK CLEANING
& WATER TANK CLEANING

- * Woodfire sales, repairs, installation
- * Septic Tank & Effluent Systems
- * Drain Cleaning Machine
- * Chimney Cleaning

171 Broadway, Marton Phone 06 327 8918

DOMESTIC WATER SERVICES



0800 400 135

Layton Hammond 027 4421 629



STORAGE UNITS

- Clean, Dry, Secure, Convenient.
- 7m³ upwards to full Household.

See website for details or Phone owner Joe Karam to inspect.

34 High Street Marton | www.jkselfstorage.co.nz | Ph 06 327 6030

Secondhand
carparts finder
service

MARTON PANEL & PAINT

Broadway Heights, Marton
Ph Ian on 06 327 7455

ROBBIES MECHANICAL SERVICES

SALES-SERVICE-REPAIRS
Mowers, chainsaws,
motorcycles and more

"All personally guaranteed"

404 Wellington Rd Marton
PH 06 327 7115

HARVEY AND CALKIN GLASS



Household Windows
& Car Windscreens
Troy Calkin

385 Wellington Rd, Marton.
Ph: 327 8750 A/H Ph 327 6917

TANK CLEAN

- Septic Tanks
- Water Tanks
- Grease Traps

Contact Tim Spetch
06327 7806
027 974 2445
timspetch@hotmail.com

HOGAN PLUMBING



Plumbers, Drainlayers
& Roofers
Natural Gas Sales
& Installations
Wood Fires

Phone 06-327-7838

BEN'S DINGO FREE QUOTES

Hole Boring 250mm 350mm 450mm 600mm
Trenching 4 in 1 Bucket Rotary Hoe
Pole Sheds Water Lines Effluent Lines
Power Cables Section Work Urban Fence
Packages Cleaning Covered Yards Calf Sheds
Stables and more from this little digger!
Ben & Jackie Lucas
Marton
06 327 8792 027 684 1305



Houses • Farm Buildings • Concreting • Alterations • Additions
All qualified tradesmen

Ph: 027 2727 047

Lawnmowing
We Love to mow your lawns!

Free Quotes

Hedges, tree trimming, section
tidies, rubbish removal

0800 800 286

www.crewcut.co.nz

CREWCUT
LAWN & GARDEN

CAREY'S JOINERY

Come and see Shaun
& the team to fix your
"kitchen envy!"

Ph/fax 06 327 7949 - 7 Bowen St, Marton
Mob 027 244 8866 - Email careys.j@xtra.co.nz



P.J. Rayner Decorating

PH 0274 427 816
06 327 8160 A/H



RANGITIKEI SECURE STORAGE

Ideal secure lock-up for your

- Boat • Caravan
- Car • Household goods
- and much more...

different sizes available for short or long term **PH 021 163 6399**

TV REPAIRS

REDWOOD TV
TV & APPLIANCE REPAIRS AND INSTALLATIONS

- Aerial Installs
- Washing Machines
- Dishwashers
- Stoves
- Fridges
- TVs

Trevor Ph: 06-327 7258 | Mob: 027 662 2809
muntedtv@xtra.co.nz

Your function specialist for over 100 guests

Awapuni Racecourse, Palm North
Lewis Jones

Ph 0800 11 FOOD (24 Hours)
email:creativecatering@xtra.co.nz

creative CATERING

Heat Transfer Units • Freeview Aerial
Upgrades • Commercial Wiring •
Domestic Wiring • Home Automation
• Security cameras & alarms



Phone/text 027 280 4667
Office 06 327 5544

palmerston.north.central@laserelectrical.co.nz



- Outdoor Power Equipment
 - Trailers/Chiller/Digger
 - Temporary Fencing
 - Portaloo's and more.
- Enquiries welcome

VISION EXPERIENCE OPTOMETRIST



BROADWAY, MARTON
Phone 06 327 7589

Rangitikei DistrictMonitor

Noticed this Space??

Get your business going...

advertise right here - right now
Contact us 06 327 7881

mcilwaine
-BUILDING SOLUTIONS
"No Job Too Small"

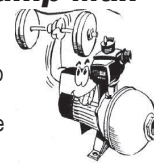
Qualified Tradesmen - New Housing,
Alterations and Additions, Joinery, Timber
Windows, Maintenance,
Light Commercial,
Farm Building, Concrete
Work, Aluminium Screen Doors



35 Russell St,
Marton Ph 06 327 4723

Water Pumps 'Call The Pump Man'

Just call 0274453 124
and Simon will
help you with your pump
requirements.
Expert sales and service
from the team at...



DOWN'S CONTRACTING ELECTRICIANS Ltd



Mechanical Repairs WOF Repairs
Tune-ups & services Tyres & Batteries
Auto Electrical Light Engineering
06 327 6979
8 Hammond Street, Marton
g-mechltd@outlook.com

Rangitikei/Wanganui

If you are contemplating selling your Farm or
Lifestyle then call Doug Glasgow, an experienced
and confidential Agent for an appraisal.

B 06 327 4732 H 06 327 3723 M 027 204 8640

www.pggwre.co.nz

PGG Wrightson Real Estate, 99 Wilson Street, Wanganui



Business Notices

SELL YOUR HOME WITH MARK & COLLEEN



MARK EDWARDS
027 570 2102

GREAT COMMISSION RATE
FREE ONLINE ADVERTISING
FREE PROFESSIONAL PHOTOGRAPHY
AWESOME SERVICE



COLLEEN EDWARDS
021 031 2442



LEARN TO FLY WITH THE WANGANUI AERO CLUB

Phone 06 345 0914
www.wanganuiaeroclub.co.nz

For Hire



26 CHURTON STREET PH 06 345 7017

MARQUEES • MACHINERY HIRE • PARTY HIRE & SALES



SUBMERSIBLE PUMPS



WATER PUMPS



CABLE PUMPS

100% Wanganui Owned & Operated

www.hiremasterwanganui.co.nz

027 332 4417

Digger Hire

1.7 tonne digger
1/2 day and full day rates

Available 7 days a week

CONCRETE GEAR HIRE

Dry hire hand held concrete cutters

Walk behind floor saws

Concrete power float

Concrete breaker

HALF AND FULL DAY RATES PH 027 2727 047

Wanted to Buy

SUZUKI SJ410

going or not. Any Condition.
Ph Mike 027 4412 697

Rangitikei
DistrictMonitor

CLASSIFIED ADVERTISING Phone 06 327 7881

For Sale

Tommy's Firewood

Mac - SOLD OUT
Pine - \$100 per cube
Poplar - \$80 per cube
Ph 06 322 1397
027 6466 438

Post Peelings, Sawdust and Firewood

Ph 06 322 1670
027 422 1670

Shed Stored Dry Pine

\$300 3.6 cubic metre
Ph 06 322 8120

CHURCH SERVICES

MARTON BIBLE CHAPEL

Where you can find the meaning
of life



Sunday 4 August
Worship Service
10am

Speaker:

Andrew Marsh

Subject:

Romans 5:1-11

All Welcome

*New series starting 18 August -
Overcoming Life Situations.*

MARTON METHODIST CHURCH

Sunday 4 August
9.30am Service

Speaker: Syd

Easton

to be held at

St. Martin

Lutheran

Church

Pukepapa Road Marton

All Welcome

contact: Dulcie Powell

06 327 6081

ST FRANCIS XAVIER CATHOLIC PARISH

Weekly Masses

Monday - Thursday - Friday

Marton 7.45am Adoration - Mass 9am

Bulls Tuesday Mass 10am

Marton Wednesday Mass and Adoration 10am

Weekend Masses

Marton Saturday Mass 10am - followed by
Reconciliation

Bulls Saturday Mass 6pm

Marton Sunday Mass 9.30am - 2pm Devotions

Rata Mass 9am, 4th Sunday

of month. Whangaehu

masses suspended.

FR PETER BROCKHILL

RUSSELL ST, MARTON

Ph 06 327 7840



ST ANDREW'S PRESBYTERIAN CHURCH MARTON

This Sunday - Family friendly service at 9:30am.
This week's message is "An Imminent Death".

Other weekly activities:

Kids on Broadway (school yrs 5-8) Wednesday 4.30-6pm

SALT Youth (high schoolers) Friday 7-9pm

Companionship 11:00am to 2:00pm Wednesday -
drop in for some fellowship and fun.

All Welcome

Rangitikei Anglican Parish



WORSHIP SERVICES

Sunday 4 August

9.00am St Stephen's, Marton

Wednesday 7 August

10.00am St Stephen's, Marton

Contact: Parish Office 06 327 8398

Whanganui Chronicle

Missed deliveries
Monday to Saturday
Ph 0800 349 071

Funeral Directors

BEAUCHAMP

- FUNERAL HOME -



Proudly serving the Rangitikei since 1981

Peter, Julie, Emily and Anthony Beauchamp

Call us on 06 327 7029 to discuss your needs and allow us to continue to
serve and support our community with the guarantee of excellence and
unbeatable value that has been our trademark for the last 30 years.

We do not charge for travel within the Whanganui, Rangitikei or Manawatu areas

Beauchamp Funeral Home and Cobham Chapel

18 Morris St, Marton

P: 06 327 7029 e: admin@beauchamp.co.nz w: www.beauchamp.co.nz

ADVERTISING DEADLINES

DISPLAY ADVERTISEMENTS

12 noon Tuesday

CLASSIFIED ADVERTISEMENTS

Noon Wednesday

PH 06 327 7881 FAX 06 327 5162

Box 79, 355 Wellington Rd, Marton

PROUDLY PRINTED BY



www.webstar.co.nz

Liz Rayner - Owner/Editor/Publisher
Allan Pond - Advertising

Editorial & advertising produced
by R & R Media Ltd
for Rangitikei District Monitor,
355 Wellington Rd, Marton

Rangitikei DistrictMonitor

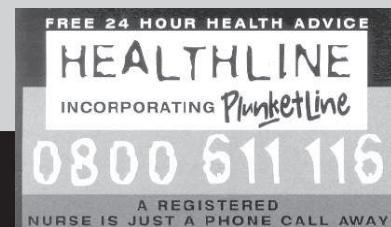
Reaching Rangitikei Readers

Phone | 06 327 7881 | monitoradvertising@xtra.co.nz

Enquiries Email | districtmonitor@xtra.co.nz

Website | www.districtmonitor.co.nz

Published weekly and delivered FREE to Marton, Bulls,
Turakina, Hunterville, Ohakea Base, Mangaweka, Taihape



WEEKEND EMERGENCY SERVICES

BULLS MEDICAL CENTRE

(06) 322 1222 8am-12pm - SATURDAY &
SUNDAY.

Outside these times call 06 355 3300 to contact
City Doctors, Palmerston North

PHARMACY

PLATT'S PHARMACY BULLS &
MARTON PHARMACY -
OPEN 'TIL NOON SATURDAYS

POLICE - 06 327 6555

POISON CENTRE - EMERGENCY
0800 POISON - 0800 764766

PLUNKETLINE - 24 HOUR
0800 933 922

AMBULANCE - Medical Emergency
call 111

MENTAL HEALTH SERVICES -
CRISIS INTERVENTION SERVICES
After hours & weekends 0800 653 358
OZANAM VILLA - WG - 06 345 4204



Sport continued from pg 8...

Fleming -3, N McDermott -4, D Singer -5 on countback. Lucky draw: P McVerry.

TAIHAPE GOLF CLUB

Taihape played Rangatira in the quarter-finals of the zones competition at Apiti, in a tough battle between the neighbouring clubs. Although the result of a 5 - 1 win for Taihape was very flattering on the score card, all but one of the matches went to the final two holes, in a closely contested fixture. The Apiti crew put on a warm welcome, with beautiful winter weather and were fantastic hosts, with a full spread of brunch before and snacks concluding their matches. Taihape's highest handicapper Kerry Wells, drew Rangatira's number one player Shane Ratima, who was narrowly beaten off the stick on the second to last 2/1, in a commendable fighting display of match play golf. Alan Thomas drew Rangatira's substitute Darren Graham, in the only match not to make the final hole - winning 8/7. Their four ball best ball was won on the last 1 up. Danny Mickleson beat Andy Lock 2/1. Duane Dick was almost outdone by Sheldon Martin on Martin's uncle's golf course, but eventually came back to win 2/1, after giving the first two holes away with stray tee shots. Both teams acknowledged, before play, whoever lost that matchup would be the butt of comments proceeding play. The Mickleson & Dick pairing won 2 up. Back home, Gary Thomas made 42 points, with a two on the toughest par 3 eight hole. Kevin O'Brien was again in the prizes, with 40 points. Dale Hunt scooted in with 36 points. Fran Robertson made 35 points. A three way tie for 5th was shared between JJ Walker, Barrie (I'm back) and Denis Robertson - all on 32 points. This Sunday, the juniors' and seniors' trophies are up for grabs, with the 3rd and final Mortland par round. Brainy Bristol is on manager's duty.

TARGET SHOOTING MARTON

Results 29/7/2019. Another week with some very credible scores being shot but again some shooters only getting one good card. Fiona Mills hit a good 100.05 on the first round but was overtaken by Mathew Read, hitting out with two 99's. Guy Forster-Pratt shot a good 97 first card, Kayla Gledhill, Allan Wright and Gary Cuff led the rest of the club from there on. Matthew Read 99.03 99.07 198.10, Fiona Mills 100.05 98.02 198.07, Kayla Gledhill 98.04 97.06 195.10, Gary Cuff 96.03 98.04 194.07, Allan Wright 98.03 96.01 194.04, Samantha Gledhill 97.04 96.03 193.07, Don Hamilton 94.03 98.04 192.07, Brent Read 94.03 98.03 192.06, Peter Lissington 97.02 95.02 192.04, Wayne Hunt 95.06 96.03 191.09, Fred de Burgh 92.02 99.05 191.07, Bob Crawford 96.00 95.02 191.02, Dave Gledhill 96.02 94.03 190.05, Guy Forster Pratt 97.01 93.02 190.03, John Mills 93.03 94.03 187.06, Neville Rhodes 94.03 93.00 187.03, Alan McCubbine 90.01 96.04 186.05, Jacob Harris 90.03 93.01 183.04, Bruce Galpin 93.01 90.02 183.03, Kevin Moody 90.02 88.02 178.04, Graeme Sixtus 90.00 84.01 174.01.

TAIHAPE PREMIER RUGBY CHAMPIONS

It was an historic day for Byford's Readimix Taihape Rugby, on Saturday, at Cooks Gardens when they beat Waverley Harvesting Border in the final of the 2019 Tasman Tanning division 1 championship. The game lasted 100 minutes - going into overtime, with Taihape gritting its way back from a shocking start, to tie the match 26-26. In 20 minutes of extra time and with two exhausted teams, the Taihape forward pack combined to allow R Lorns in with a pushover a try, giving Taihape 31-26 point win in their fourth final, after three previous premier wins. Strong and noisy crowd support from Taihape supporters must have made the difference. It is Taihape Rugby's first premier win, since the town's clubs amalgamated. Taihape : tries: R Lorns 2 , T Rogers - Holden and P H- Horton. D Whale 3 pen; con. Border: tries: C Clare, C Breuer. N Harding 4 pen; 2 con.



UCOL Manawatū open day

UCOL Manawātū is set to open its doors to potential students with its winter-themed open day on 7 August.

Visitors will be able to take tours of UCOL's facilities, and get hands-on with workshops and activities that give them a sample of skills they can learn at UCOL. There will be tours of the learning facilities for:

- Trades (Carpentry, Joinery, Furniture Making, Construction, Architectural Design, Automotive, and Electrical and Mechanical Engineering)
- Early Childhood Education
- Hairdressing and Beauty
- Nursing
- Creative Industries (Photography, Art, Design)
- Vet Nursing and Animal Care
- Medical Imaging Technology
- Chef Training and Hospitality

In the campus' main atrium, visitors will find information stands and interactive displays for these subjects, as well as Exercise and Sports Science, Music, Business, Information and Communications Technology, and programmes for students still at secondary school.

People who have developed certain skills and knowledge through years of work, but don't have a formal qualification to reflect that, will be able to find out more about UCOL's Assessment of Prior Learning (APL). APL evaluates whether such skills and knowledge can be formally recognised and credited towards a relevant certificate, diploma or degree.

As well as showcasing the subjects on offer, the open day will emphasize the essential services available to students at UCOL and in the Manawātū community. This will include UCOL's student success team, which provides advocacy, wellness, learning, and employment support, as well as external organisations such as Student Job Search, StudyLink, and Housing Advice Centre. UCOL executive director of business development Dr Arthur Chin says the open day is a great opportunity for people to get a taste of UCOL life.

“People will hear about the programmes we teach at UCOL, but when they actually come and check out the facilities is when they get to fully appreciate what goes on here.”

"Students often comment on how well supported they feel at UCOL, so we're glad to be able to also show off the essential services that support students along their study journeys."

To go along with the open day's winter theme, there will be a snow machine set up outside the campus and other winter related activities throughout the day.

People can register for the open day and find out more information about the tours at Eventbrite. UCOL Manawātū open day runs from 9am to 3pm on Wednesday 7 August. This will be followed by open days in Whanganui, on Wednesday 4 September and in Wairarapa on Wednesday 23 October.

TOUGH GUYS AND GALS TO TEST THEIR FITNESS ON ARMY COURSE

New Zealand Defence Force personnel will join hundreds of people testing their fitness and strength next Friday and Saturday in the muddiest challenge of the year at Linton Military Camp. The New Zealand Army is hosting the Tough Guy and Gal Challenge and the Tough Kids Challenge for the 10th time, in the challenge's 17th year of nationwide events.

About 2000 competitors will wade through water and mud, run and tackle parts of the army's confidence course, in the adult event on Saturday, 3 August, over either a six, or 12-kilometre course. The junior event for children, on Friday, 2 August, consists of a 1.5-kilometre course, for 7-8-year-olds and a three-kilometre course for 9-12 year-olds.



	1					2		3
			4		5		1	6
		7						
	6	3			8			
			9			1	4	
						9		
5	4		1		7			
8		2					3	

July 25 Solution

1	7	8	2	5	9	3	6	4
9	3	2	6	8	4	5	1	7
6	4	5	7	3	1	2	9	8
5	1	3	4	7	2	6	8	9
8	6	4	3	9	5	1	7	2
7	2	9	8	1	6	4	5	3
2	9	7	5	6	3	8	4	1
3	5	1	9	4	8	7	2	6
4	8	6	1	2	7	9	3	5

