

Kia Kaha - we are with you Christchurch

Words matter. The outpouring of emotion, in words and songs across New Zealand, in response to the utter horror of the Christchurch slaying of innocents, is witness to that.

We have watched from afar as other countries have undergone terrorist attacks and thought, how lucky we are to live in our New Zealand paradise but, for the first time, we are experiencing the effects of the horror first hand.

The tentacles of this senseless Christchurch attack have spread far and wide across the country, because we are small, close-knit nation. It has reached Rangitikei; with relations of former residents directly involved. Taihape's former policeman, who was responsible for setting up the Taihape Mosque, is helping out his fellow Muslims in Christchurch right now.

New Zealanders have responded with an outpouring of love - wrapping the hurt with words of support and love and vowing (with words) to do things better. It's placed our moral compass in stark relief against the evil in the world and, as a country, we came out speaking words of love and the world has noticed.

It's time for Facebook, YouTube and Twitter to examine their role in spreading words that breed hate. If they want to be a part of our New Zealand culture, they need to find their moral compass and become decent world citizens. Technology knows no bounds they say. Then use that technology wisely - spend some of your billions and solve the problem. I have publication parameters of decency - so should they.

Marton is planning a memorial gathering on Saturday, to acknowledge the Christchurch attack - join them and bring your words with you, even if they are only in your head.

Liz Rayner - Editor.

Tributes arrive at Taihape Mosque



Flowers began to be placed outside the Taihape Islamic Centre Ad-Deen Mosque on Saturday morning. More were added throughout the weekend. Churches throughout Taihape offered prayers and karakia for all who had lost loved ones and for all of Christchurch. Delivering flowers were Pastor and Mrs Lazareth (left) and Pat Karatau (right). Rangitikei District Council placed flowers on behalf of the district.

Join Marton Hope and Heart Saturday

Marton women, Belinda Howard and Sandra Field are organising a Hope and Heart gathering to give Marton residents a place and time to grieve after the Christchurch terror attack and to honour those directly affected and to build community togetherness in our town. It's on Saturday at 1pm in Marton Park. The format will include a welcome and several speakers, followed by a prayer for peace and love. It will be a community picnic with fun

activities and a collection for the Christchurch support fund. Check out Marton social media for updates.

If you want to help: text Belinda Howard 021 357 6668 before Saturday.



Flowers placed on Marton's northern roundabout - a customary memorial.

FARMERS

WE OFFER...

Direct drilling and autumn cultivation.

Hay straw and balage sales and processing.

BRUCE GORDON CONTRACTING LTD

CALL US ON 0800 CROP IT (276748) or 063276094

GK SKOU TRANSPORT

LIVESTOCK AND GENERAL TRANSPORT

37 Kensington Road
MARTON

Ph 06 327 6424
027 442 7463

Email:
graeme.skou@xtra.co.nz

Big enough to compete - small enough to care



Mike Aldworth Insurance Advisor to the Rangitikei Experienced Insurance Advisor

crombie lockwood

New Zealand's Insurance Brokers

For efficient service and a competitive price for all your insurance requirements

Contact Mike at (06) 327 7502
Mobile 0274 571 690 - Fax (06) 327 7574
PO Box 189 Marton

I shop



New World Marton

Delivering to Sanson, Ohakea, Bulls, Marton & Hunterville.

ishopnewworld.co.nz



Click & Collect



Delivery



smart environmental
100% New Zealand owned and locally operated

BIN HIRE

Bin Hire Specials

Various sizes from 1.8m³ - 9m³



Prices may vary beyond Marton boundary
Weight limits apply
Please contact us now to discuss your requirements
Phone 06 324 0693
0800 424 990
www.smartenvironmental.co.nz



MORRISON

Boxer 2' n 1
\$399
Catches and Mulches



Maximus
\$449
Quality catch & mulch mower.



222 BROADWAY, MARTON
PHONE 06 327 7501



9cent
6x4" & 5x4.3"
PRINTS

50% OFF
ALL ENLARGEMENTS



Offer finishes 24 March 2019
2-3 day service



Marton Pharmacy
Medicine + Advice

292 Broadway Marton
Phone 06 327 0050

Join Pedal 4 Pleasure

As the autumn days become cooler, there is no better time to get out for a cycle around the stunning scenery of the Rangitikei. The Pedal 4 Pleasure bike ride is back again this year, on Sunday 31 March. There are three options for cycling enthusiasts starting at Wards Furniture in the main street of Marton. The 80km ride is now a circuit due to the recent sealing of the Turakina Valley road which means the entire route is sealed and off main highways, which is luxury in cycling terms. There is also a 40km circuit for those wanting a shorter distance and also a 15km circuit for families and beginner riders. The event is a fundraiser for local charities and is organised by a group of Marton Rotarians. This year the organising committee made the decision to hold the event on the same day as the popular Marton Harvest Festival, albeit in the morning. Riders can set off and complete all three rides before the Harvest Festival cranks up and the food stalls and entertainment on offer at the Festival guarantee a fun filled day for the whole family. Once again the major sponsor is Wards Furniture who have donated a LaZboy chair for one lucky spot prize. Another major spot prize is a brand new Jamis bike donated by Robbies Mechanical. Organisers say there are plenty of spot prizes for anyone who turns out to the prizegiving at the Marton Rugby Club at 1pm. Pedal 4 Pleasure is all about getting out and giving it a go whilst still providing those with serious intentions the chance to push themselves over the longer course. Those with E-bikes are welcome to enter as are families with younger children looking to enjoy a cycling experience together. Exercise is a proven contributor to mental wellbeing so why not dust off the cycle and get a group together for some pedalling around the quiet, country roads that surround Marton. Entries are open now at: sporty.co.nz/pedal4pleasure. For more information search Facebook: Pedal 4 Pleasure



Local artists in Whanganui Open Studios

Six art studios in and around Marton will open their doors to the public as part of the Whanganui Artists Open Studios over the last two weekends of March in conjunction with Whanganui artists.- on March 23 and 24 and March 30 and 31. Whanganui Artists Open Studios is held annually over two consecutive weekends in March, with other events and workshops during the weekdays in between.



There are six Marton studios participating in the Whanganui Artists Open Studios over the last two weekends of March in conjunction with Wanganui artists. From left: Barbara and Dave Smissen, Ali Hale Tilley, Lorraine Barnett, Ross Wilson, Belinda Howard. Absent is Sam Lewry.

Artists Open Studios has become the gateway to experiencing the Whanganui region's vibrant and diverse arts community. Home to many established, world renowned and emerging artists, the city is a premier NZ arts destination. The event will take you on journey through some quirky and historic locations of 76 studios and over 200 participating artists, in Whanganui city and surrounding areas of Marton, Mangaweka and Waverley.

The Starting Point Exhibition on 19 Taupo Quay in Wanganui displays a work from each studio; to give you a snapshot of what you will see on your studio visits. The works are also available to purchase and available for collection once the event ends. You can find all event information on the website - openstudios.co.nz - which features profiles for each studio, an interactive map and search by suburb and medium. There you will also find the 2019 Artist Open Studios Trail Guide available to download buy at studios.

The Rangitikei participants in the Whanganui Open Studios include:

Bronze Garden Party -39 Wanganui Rd, Marton - artists Desiree Singer, Rachel Stockley, Ross Wilson, Lorraine Barnett, and Steuart Welsh. **The Art Studio**- Sam Lewry - 37 Henderson Line, Marton. **Iconic Art Studio** - Ali Hale Tilley and Daniel Williamson, NZ Yoga Centre, corner of High and Stewart Sts, Marton. **Marton Barber Art Gallery** – 330 Wellington Rd, Marton – local artists. **Marton Arts and Crafts Centre** – 16 Grey St, Marton - local artists and crafters. **6 Griffin's Rd, Marton** -artists Barbara and Dave Smissen **Also included is The Yellow Church Gallery** - 6360 SH1 Mangaweka – artist Richard Aslett and gallery artists.

In Whanganui, you can visit 70 artists, take a Behind the Scenes Tour of Sarjeant Gallery with a rare opportunity to enter the

collection store where you will discover the stories behind one of the country's most significant collections from those who work with it every day.

Enjoy a performance of music, visual art, movement and theatre which allows the audience to be surrounded by a visual and musical experience - Sound Canvas - presented by the Whanganui Brass Band at the historic Royal Wanganui Opera House. You can also learn the techniques of clay, mosaic or felt-making in workshops during the week.

Meet the artists behind the art.

Open Studio Weekends:

23rd & 24th March

30th & 31st March

openstudios.co.nz

ARTISTS OPEN STUDIOS
WHANGANUI

Te Taonga Toi O Aotearoa
The Arts Destination of New Zealand



VIEWPOINT



Letters to the editor must be 200 words. Please provide a name, address and phone number.

McKelvie Memos

MP for Rangitikei



BITS n' PIECES

Hope and Heart - tribute to Christchurch this Saturday March 23, 1pm, Marton Park.

On Friday 15 March, NZ was shaken to its core. An unspeakable act of violence not only tore families apart in Christchurch but it has ripped through the hearts of all New Zealanders.

Our first priority has been supporting the families, the victims and the Islamic community of NZ – they are Kiwis and we stand beside them and condemn this horrific act.

This was not something that happened to just the Islamic community, or just to Christchurch. It has happened to all New Zealanders and all New Zealanders are grieving.

The National Party stands in solidarity with the Prime Minister and the Government in condemning the horrific and violent terrorist attack in Christchurch.

Our deepest condolences, thoughts and prayers go to all those directly affected by Friday's events, and to the wider Canterbury community - we share your deep sorrow.

The values of this country, our beliefs, our tolerance for one another and our ability to get along with each other, have made NZ the type of place where people want to live. These unthinkable murders will not change that. In fact, I believe we are witnessing a coming together in adversity that will only strengthen and unify us into the future.

Vigils have been held throughout the country and Manchester Square in Feilding was packed on Monday evening as people gathered to share and express their grief and show their solidarity for those for whom the effects of this tragedy will last a lifetime.

The annual CD Field Days were held last week and, at midday on Saturday, a minute's silence was observed. Thousands of exhibitors and visitors representing rural and provincial NZ came to a standstill on the Manfeild race track.

We stand with and support the NZ Islamic community. NZ is your home. Your contribution to the rich fabric of our society is valued and appreciated. No one in this country should live in fear no matter their race or religion, their politics or their beliefs.

I would like to acknowledge and thank our emergency responders, our police and medical staff who worked tirelessly and continue to work tirelessly, to ensure we feel safe and who are doing all they can for the wounded.

They are heroes, as are the victims who risked their lives to save others. We will remember them and their bravery.

We are still coming to terms with the worst massacre our country has ever seen.

But during times of horror, New Zealanders rise up and stand together. We are doing that now.

An historic photo from a Rangitikei museum features each week.

We are united in our grief and in our determination to remain the type of country which accepts all people regardless of race or religion. A country which stands up against hate and is a safe place.

We offer our support in any way we can. We were with you Friday, we are with you today, and we will be with you tomorrow.

Christchurch Mosque Attacks

On behalf of all Grey Power members and associations I would like to extend our condolences and deepest sympathy to the victims and their families of the horrendous attacks that occurred in Christchurch last week.

As New Zealanders we stand shoulder to shoulder with them and condemn, in the strongest possible terms, any actions such as these, against innocent persons wherever they occur.

Mac Welch

National president, Grey Power NZ Fed. Inc.



From the Mayor's Desk



Open letter to the people of the Rangitikei District

In a week in which the world over mourns the tragic loss of life in Christchurch, I had the honour of welcoming 21 new citizens to the Rangitikei District.

Our new citizens originally hailed from the Phillipines, South Africa, Samoa, Britain, Switzerland and Cambodia.

It was a heartfelt ceremony and it provided an opportunity for me to reiterate that New Zealand is a safe and welcoming place to live - the Rangitikei is a safe and welcoming place to live.

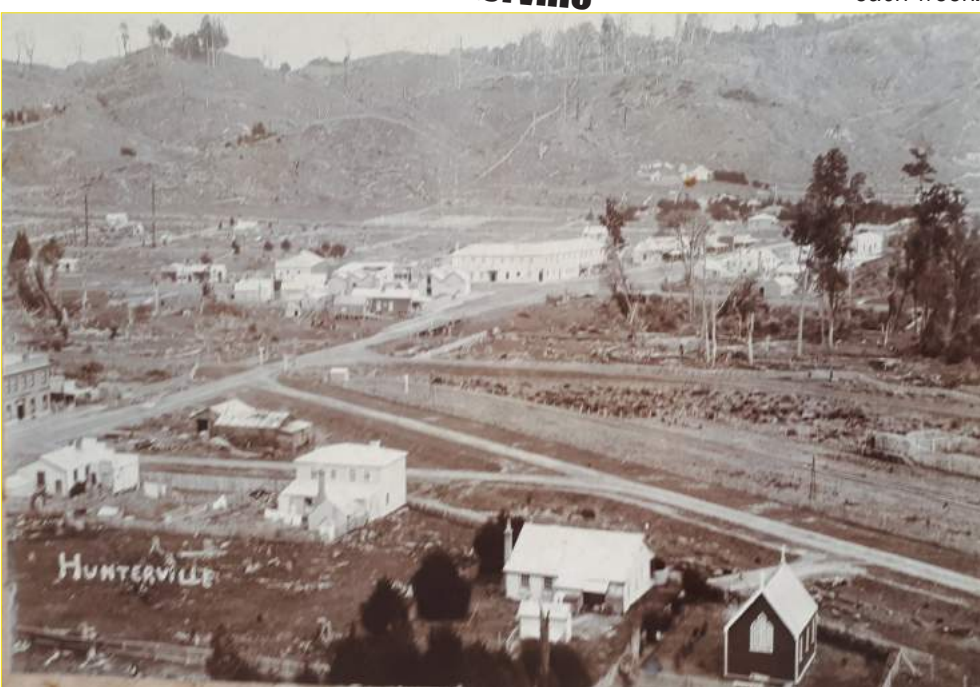
Unfortunately, the tragic events of last Friday show us that we are part of the wider world and that random acts of terror can happen anywhere.

Our hearts go out to those that have lost loved ones. Our hearts go out to those communities that have been targeted. I concur with Prime Minister Jacinda Ardern's comments that people should feel safe here and that those people who act in these ways shouldn't be part of our communities.

Mayor Andy Watson.



RANGITIKEI HISTORY



Early Hunterville scene - the town was founded in 1884. The railway arrived in 1887 and by 1896, the population was 546, larger than it would be a century later. Hunterville Museum, Milne St (SH1) is run by volunteers and opens Friday 2-4pm. Contact Jack Still ph 06 322 8063 for any enquiries.

CRONIN WELLS LTD



CRANE AND TRUCK HIRE

UP TO 18.5M REACH CAN LIFT UP TO 8 TONNE

170 Broadway, Marton - 06 327 7679 - 0274 474 709

OPEN DAY

ON SATURDAY

**30th MARCH 2019
10am TO 1pm**

- We have
- Sausage Sizzle • Bouncy Castle
 - Farmland Friends
 - Enrolment Specials and more

FREE EVENT

ALL ARE WELCOME

AFFORDABLE & QUALITY CARE FOR YOUR CHILD



All About Children
EARLY LEARNING CENTRES

394 Wellington Rd, Marton
Email: marton@allaboutchildren.co.nz

PH: 06 601 1600

Shake. Shake. Shake.

All dogs welcome.
Saturdays at 9am.
Sir James Wilson Park
www.tailsandtrails.nz
tailsandtrailsdogclub@gmail.com

TAILS & TRAILS DOG CLUB

RANGITIKEI WHEELIE BINS

- Kerbside collection
- Weekly or fortnightly
- Commercial pickups

Locally owned and operated
Phone 06 327 8336 or 021 477 814

ADVERTISING DEADLINES

Display Advertising – Tuesday 12 noon
Classified Deadline – 12 noon Wednesday
Read it Thursday! online www.districtmonitor.co.nz
In your box - on line and on Facebook.

Rangitikei
DistrictMonitor

Phone: 06 327 7881

districtmonitor@xtra.co.nz monitoradvertising@xtra.co.nz

MARTON OSCAR
Rangitikei

NEW! HOLIDAY PROGRAMME
AGES 5-14
ENROL NOW
LIMITED ENROLMENTS AVAILABLE!
FOR MORE DETAILS OR AN ENROLMENT FORM PLEASE CONTACT
QUEENIE MITCHELL
021 267 1999 or 327 8538

**WEEK1: Mon 15 April to
Thurs 18 April 2019**
FRI PUBLIC HOLIDAY - MON PUBLIC HOLIDAY

**WEEK2: Tues 23 April to
Wed 24 April 2019**
THURS PUBLIC HOLIDAY
Fri 26 April

MARTON OSCAR offers affordable fees and no hidden costs!
Term fees are \$5.50 per hour, holidays...\$45 per day.
WINZ subsidies available. We operate at Marton Junction School Hall.
Ring Queenie Mitchell (021 267 1999) or call in and see us.

CLUB SCENE



Marton RSA

Well, we're all in for a busy time of it, over the next six weeks. Remember members - 27 March; our AGM at 4pm at Cooks Bar. Poppy Day will be on 12 April. We need volunteers for poppy stalls. If you are able to help ring Ralph 06 327 4118. On 18 April, a pizza night has been arranged for our members at The Lounge Café, 244 Broadway at \$20 a member. It should be a good night out. In approx 3 months - we are at present organising an Indian meal at the Club Hotel, so keep an eye on our newsletter. The big one of course is our ANZAC Dawn Parade on April 25. Give us a good turnout. Marton Arts, in conjunction with Marton RSA, is having a Poppies on Parade Display to commemorate the return of our troops from WW1. This will be on display at the Marton Library after Monday 15 April. Take your hats off for the Marton business people again. Their donations of goods has been wonderful, this means, we will have a better raffle than last year. Thank you, wonderful people.

Marton Friendship Club

Morris St hall - open at 12.30pm, bring your lunch, have a cuppa and a chat. Main programme starts 2pm. Bring a friend and help the club to grow. Friday 15 March - raffles were, won by Audrey Thomas, Tari Ruscoe, Wendy Lee, John Scarbrough and Jennifer Hawkings. We enjoyed a quiz day, organised by John and Deana Scarbrough - always a lot of fun. On Wednesday 20, many members attended Bulls Friendship 'Friends Day,' an annual event for their fundraiser. This Friday 22 March, we will be entertained by Gillian and Allan from Wanganui. Come along and enjoy the afternoon.

Marton Music Society

Marton Music Society's AGM will be held this Sunday, March 24 at 2pm in the Friendship Hall, Morris St, Marton and all who are interested in music in Marton are welcome. The meeting will be followed by a concert of works by Schubert and Mozart, performed by Ingrid Culliford of Wanganui and two Nga Tawa students. Ingrid will be playing two delightful piano works by Schubert, his Scherzo D593 and the dances Valses Sentimentale No's 1-5 D779 as well as Mozart's Fantasia in D Minor K397 for piano. She will also be performing a flute duet arrangement of arias, from The Marriage of Figaro by Mozart, with German Exchange student Marie Willenbrink. Alma Leung will perform the very lively first movement of Mozart's Piano Sonata in D K311. This should be a very enjoyable concert of short works.. Ingrid Culliford is renowned in NZ both as a flautist and pianist and is also a highly regarded

teacher and she has also performed extensively in the UK. The concert will be followed by afternoon tea and all are very welcome. If you are new to Marton and interested in music we would be especially pleased to welcome you.

Marton Contract Bridge Club



Annual picnic tournament winners, Matthew Hughes (left) and Steve Baron.

Marton Contract Bridge club held its annual Picnic Tournament on Sunday 17 March. It was a great success, attracting a full capacity of 16 tables for a day of competitive Bridge and with a healthy number of top grade players from the region. The winners were Marton youth and intermediate grade player, Matthew Hughes, along with his Whanganui grandmaster partner, Steve Baron. Matthew is a university student studying chemistry and has only been playing Bridge for 4 years. Second were Palm.North gold grandmaster, Lorraine Stachurski and her grandmaster partner, Sarah Green, from Hawera. Third were grandmasters, Pat Oysten and Anita Thirthle, Whanganui players. Club president, Trevor Ellery says, "It was a real thrill to see our local lad, Matt Hughes, take out this event with Steve Baron, especially, when he was up against such illustrious competition, who had far more experience than Matt and especially given he has only been playing for a few years." Ellery also says, "We all had a great day and because of our limited space and the popularity of the event we even had to turn people away."

Hughes partner, Steve Baron, says, "This was the first time Matt and I had ever played together and Matt played particularly well. I was actually surprised at just how well he played given he hasn't been at the game for very long. He has a great understanding of the game and that augers well for the future of Bridge, with young people like Matt taking up the game and being so competitive against far more experienced players."

The Marton Contract Bridge Club is only a small rural club with just 69 members and only hold this one tournament per year. The club was established 40 years ago.



Truck & Digger Hire

Roading

Subdivision

Farm Tracks

Concrete Cutting & Placement

Concrete Core Drilling

Pit metal - Supply & Cartage

Aggregate Metal - Decorative to Roding

Shellrock/ Mulches /Topsoil



35 Kensington Rd, Marton Ph 06 327 6677 0272893799

Email: andrewmorriss@xtra.co.nz



SPOTLIGHT ON OUR HEALTH

MENTAL HEALTH CRISIS HELP

When you're in the thick of a situation, such as a mental health crisis, it can be hard to know what to do and who to turn to for help.

Please remember, the Police act as the frontline in Mental Health crisis situations and should be called if somebody is threatening to harm themselves or others. If you, or someone else is experiencing mental distress and you are fearful for their or your own safety, please call **111** immediately.

Whanganui DHB's Mental Health Assessment and Home Treatment Team (often known as the Crisis Team) provides seven-day, 24-hour assessment and short-term treatment services including home treatment for people experiencing serious mental health problems.

If you have concerns about an individual who you feel may be suffering from serious mental illness, please contact **0800 653 358**.

MENTAL HEALTH HELP & SUPPORT RESOURCES

- The 1737 support line is a free helpline available 24/7 for all who need to talk. Free call or free text **1737**. They work with DHBs and emergency services as and when appropriate.
- Free advice from a trained medical professional is also available from Healthline on **0800 611 116**
- The Depression Helpline: **0800 111 757** or free text **4202**
- Lifeline: **0800 543 354**
- Youthline: **0800 376 633**, free text **234** (8am – 12am), or email talk@youthline.co.nz
- The Lowdown: www.thelowdown.co.nz or free text **5626**.

PROTECT YOUR FAMILY/WHĀNAU FROM FLU THIS WINTER

Now is the ideal time to start thinking about influenza immunisations so you and your whānau are protected, in the best way possible, from the flu this winter. Flu vaccines will be arriving in general practices and participating pharmacies in April - the best month for people to get their annual flu shots to ensure they're protected before flu season strikes.

Flu immunisation is free from your doctor or nurse from April until the end of December, if you are:

- 65 years or over
- pregnant (any stage of pregnancy).
- under 65 years of age (including children) with long-term health conditions such as heart disease, stroke, diabetes, respiratory disease (including asthma that requires regular preventive therapy), kidney disease and most cancers.
- aged four and under and have been hospitalised for respiratory illness or have a history of significant respiratory illness.

Even if you don't qualify for free immunisation from your doctor, nurse or pharmacist, you may still be able to get one free from your employer. Flu shots are also available for anyone for a fee from a doctor, nurse or some pharmacists.

Please encourage your family/whānau who can get a free flu shot to see their doctor, nurse or qualified vaccinating pharmacist.

DO YOU HAVE A 'WHAT IF' PLAN?

If you suddenly became seriously unwell, what sort of health care treatment would you want? And who would you want making decisions if you couldn't speak for yourself? Advance care planning (ACP) involves thinking about your future and end-of-life care and sharing this information so your loved ones and health care team can provide what's important to you.

An advance care plan:

- outlines what medical treatment you want if you had an accident or life-threatening illness
- includes information about the type of care you want including where you'd like to be cared for
- details who you want making decisions if you can't speak for yourself
- is different from an enduring power of attorney as it outlines what you want this person to do and the decisions they can make.

It's not easy to think or talk about being unwell or dying, but it's an important conversation to have now, before you need it. An advance care plan relieves your family of the burden of making decisions for you if you can't make these for yourself.

There is lots of information available to help you prepare a plan. Contact your general practice for a hardcopy and further information or visit www.advancecareplanning.org.nz.



Russell Simpson | WDHB Chief Executive



Dot McKinnon | WDHB Board Chair

1

Home
(Self Care)

UNWELL OR INJURED? Where should I be?

2

General
Practice (GP)
& After Hours

- Call Healthline **0800 611 116** – for free medical advice 24hrs/day.
- Home for rest, regular fluids and pain relief, if required.
- Talk to your pharmacist – they are a good source of information.
- Contact your general practice team first.
- For urgent or after hours care, contact your general practice in the first instance for advice. Or visit the Whanganui Accident & Medical (WAM) service located at Whanganui Hospital. Open every day from 8am - 9pm.
- Emergency Department for emergencies.

3

Emergency (ED)



follow us on [@whanganuidhb](https://twitter.com/whanganuidhb)

find us on [whanganuidhb](https://www.linkedin.com/company/whanganuidhb)

find us on [@whanganuidhb](https://www.facebook.com/whanganuidhb)

wdhb.org.nz



NOW SERVING BREAKFAST & LUNCH

Come and see us to try our new menu
Plus cabinet food & great coffee!
- Bryce & Kim Crawford

We have - air conditioning • disability lift
• heating • Wi-Fi • outdoor dining

Mon-Fri 7.00am-3.30pm – Sat 7.30am-2pm

267 Broadway, Marton • 021 251 9444
Email: fourdoorsdown267@gmail.com

 Find us on
Facebook

Win prizes in the Pumpkins and giant produce competition run by the Rangitikei District Monitor and Stewart Street Surgery at the Marton Harvest Festival

2018 Marton Harvest Fair ugliest pumpkin award.

It is a Pumpkin Beretta Piacentina. It's botanical name is Cucurbita pepo and it is a rare heirloom pumpkin from Italy known as the "Beret of Piacenza," highly regarded for dense sweet nutty flesh, low fibre and very good storage qualities. Each fruit weighs between 2-3kg and has a grey green knobbly skin and bright orange flesh inside.

PUMPKIN

Competitions

GIANT - UGLY - SMALL - DECORATED - PIE
IF IT'S A PUMPKIN WE WANT TO SEE IT

If you have grown a pumpkin that is potentially over 100kg contact Liz Rayner at the District Monitor 06 327 7881
All other Pumpkin entries to be at Harvest Fair Pumpkin Area by 10am

New location, new name.. same owners

The friendly staff at Four Doors Down, Marton's newest cafe.

Bryce and Kim Crawford know the coffee industry, having spent the last 13 years refining their business to the point of taking the next step.

In recent time, they sold their Sublime Coffee cart in Bulls and with it the Sublime logo.

Their Marton shop has moved and rebranded to the eye catching 'Four Doors Down,' situated within the former ANZ bank building at 267 Broadway.

'Four Doors Down' is a cafe moving with the demand of a thriving town. Bryce and Kim took the challenge of converting their space to enhance the beauty of the building.

The couple is excited to see their goals being achieved, with the latest being the appointment of a chef who has added to the cabinet range, along with devising a new breakfast and lunch menu.

The building itself has a disability access lift, wifi, heating and air conditioning, a children's play area, spacious toilets and a deck at the rear... among the trees.

Kim says, "We have a number of private dining areas, and can cater for groups. The next area we are working towards is providing out-catering for those who require it."

They are open for business.

Trillion Trek in Taihape



Fire trucks at Taihape Area School created a whole lot of fun for the children.

Taihape Area School pupils (and teachers) had a great time when crews and vehicles of the Trillion Trek called last Friday morning. Water soccer using the trucks fire hoses, was a great hit as was 'the best ever clown show' put on by a clown from Australia who is travelling with the trekkers.

TAS principal Richard McMillan said the morning was enjoyed by both children and teachers, "We all had a great time."

"The trekkers delivered a sports travel grant which we had applied for. Along with handing out gifts to the children they also gave away two bicycles. Children's names were put into a bucket and two lucky, well deserving winners were chosen."

The trekkers were nearing the end of this year's journey which saw them begin at The Chateau, then Palmerston North, a couple of stops in the Wellington area and through the Wairarapa, Hawkes Bay and across the Gentle Annie to Pukeokahu school on Thursday. Friday afternoon saw them in Wairakei and the trek was ended in Cambridge on Saturday. Then it was up to the crews to get their vehicles to home base, which for some, was in the South Island.

This year's trek saw ninety odd volunteers give just over a week of their time to do the journey, along with an interesting collection of vehicles in immaculate condition. Obviously, sponsorship is a major help, along with major fundraising efforts by crews, in readiness for the next trek.

The Trillion Trek is associated with the Trillion Trust Incorporated, a charitable organisation which grant funds for purposes that benefit the applicants' community.

Applications for grants can be made via the website www.trillion.co.nz. Story and photo Terry Karatau.

TAIHAPE GUMBOOT DAY

Sat 23rd March

Whats On ?

Taihape Gumboot Day hosts a large number of activities. The day is free to enter and most activities are either free or koha.

At Gumboot Day this year, there will be live music and shows all day. It hosts a craft, arts and food market; rides and activities like a bouncy castle, face painting, pony petting, and circus zone. Workshops include activities such as bees, wrap making, woodwork, tile decorating and rock painting.

Competitions include cake baking, soap carving, Fred Dagg dress up and gumboot decorating.

Displays will include local fire engines, St John, Taihape Museum, vintage cars while demonstrations will feature art, blacksmithing and a dog wash and to top it off, RNZAF will pay Taihape a visit!

The event takes place at Memorial Park and entry is right next to the Taihape Grandstand.

There will be a picnic area where people can enjoy the atmosphere while children have a great time enjoying all the activities that are available.

Gumboot Day -a little history

By 1985, the effects of the post subsidy era in agriculture were being felt in rural town and country alike; reducing incomes thus causing a reduction in the spending ability in small towns such as Taihape. Taihape experienced the downsizing of NZ Railways. The population of Taihape fell from 3500 in the early 1960s to about 1800 in 1985. To survive, the town needed to take action.

Late in 1984, 'Taihape Promotions' held a series of meetings searching for ways and means avert the imminent downturn. They built on the ideas of comedian John Clark (Fred Dagg) who experienced success with 'The Gumboot Song.' He also referred to the 'Taihape University Seat of Joinery.'

The group decided to halt the passing traffic on SH1 in Gumboot Park - travellers would stop and see what Taihape had to offer. Gumboot Day was born.

The first Gumboot Day consisted of gumboot throwing, gumboot races, Fred Dagg look-alikes, decorated gumboots and shop window displays providing a day for town and country alike. The second Gumboot Day developed the Taihape University theme. Degrees in "Gumboot Throwology" were awarded by the professor and dean. The attempt on the gumboot throwing world record has become a fixture for the event.



Taihape Panel

Call Us Before You Call Your Insurance Company

Vehicle Insurance/Rust Repairs
Assessments for all Insurance Companies
Courtesy car available

Contact Earl Rae
06 388 1605 or 022 073 3011

Division of

MARTON
PANEL
& PAINT

FOR ALL YOUR TRAVEL NEEDS CONTACT NIGEL BUCK 06 388 1008

helloworld Taihape 108b Hautapu St
taihape@helloworld.co.nz

Family day for Taihape Gumboot

Taihape Gumboot Day family festival has been running since 1985. This year it features the World Gumboot Throwing Championships that run on Saturday and Sunday. If you want to see big throws, this is the year to go and see the live action. "It's the first time that the world champs have been held in the southern hemisphere.

Every year, between 2,000 and 3,000 people attend the event, from Rangitikei District, Wellington region, Taranaki, Hawkes Bay and Waikato and this year, there will be international visitors.

Taihape is where it all started in NZ. Gumboot throwing developed from a little bit of fun into a sport that made the Guinness Book of Records and developed into national championships.

Each year famous personalities take part and heave a boot...including former All Black Bull Allen, TVs Te Radar and Lynn of Tawa (Ginnette McDonald). Olympic star Valerie Adams and How To Dad have competed. Dame Valerie Adams participated in the NZ champs as a wild card in 2017. She won, but she didn't break our NZ women's record. President of

the German Boot-throwing Association, Anita Otto, is returning to compete.

Gold sponsor for Gumboot Day, Fly Palmy will be running the 'Fly Palmy Gumboot Throwing Lane' together with Taihape Rotary. Have a go at a Gumboot Throw. This activity is open to all novice gumboot throwers and will have many categories so all ages groups can participate.

The festival's silver sponsor is Byfords Construction 2014 Ltd with Matt Hobbs Plumbing & Drainlaying Ltd being the bronze sponsor. In addition to sponsors, the event wouldn't be possible without grants from Pub Charity, Rangitikei District Council and JBS Dudding Trust.

The World Boot Throwing Championships are being organised by the New Zealand Boot Throwing Association.

The number of people on the Gumboot Day organising committee varies each year but the event is mostly organised and run, by volunteers.

Visit Taihape Gumboot Day and while you're there ... have a go throwing a gumboot.



TAIHAPE
GUMBOOT DAY®

Sat 23rd March



Featuring IBTA World Gumboot Throw Champs Sat & Sun

Gumboot Day started in 1985. The New Zealand Boot-throwing Association was established by the Taihape Community Development Trust and joined the International Boot-throwing Association as the fifth member country in 2011.

IBTA holds competitions in Europe and Scandinavia each year culminating in the World Champs and the world cup. In 2017 and 2018, the World Champs were held in Finland, with the World Cup held in Italy. New Zealand was represented at the world champs in 2018 by Kieran Fowler, NZ men's champion and Elizabeth Mortland (from Taihape), current NZBTA and IBTA president. Elizabeth also represented New Zealand at the IBTA World Cup in Italy.

The 2019 Skellerup World Boot-throwing Champs are being held at Gumboot Day in Taihape this Weekend. The 2020 World Champs will be held in France. International media are present at the competitions in Europe and Scandinavia and TV1 and Sky TV have been present at competitions in Taihape in the past.

Keen throwers train extensively before competitions. Taihape BTA organise training sessions in Taihape before competitions but throwers generally train in their backyards or out on farms. But many people just get up and have a go on the day.

Apparently "it's all in the technique" (quote Curly Troon, chair NZBTA and icon of the Gumboot Throw in Taihape and NZ).

Taihape Honda
RED BRAND COUNTRY

Is a proud supporter of
Taihape Gumboot Day
See you there on
Sat 23 March 2019

Ph 06 388 1211

Taihape Engineering

Steven will be onsite at
**Gumboot Day demonstrating
Blacksmithing and Forging**

See us for all your engineering & supplies

Have a Great Gumboot Day!
from
Treasure Trove

**"We BUY Nearly Anything –
We SELL Nearly Anything"**

122 Hautapu St, Taihape
Ph Geoff on 021 451 974

MEET
RONALD McDONALD®

**ALL the
Best for
GumBoot
Day!**

From The Home of Fakes & Forgeries 2019
www.freewebs.com/mangawekagallery

TAIHAPE
GUMBOOT DAY®

Sat 23rd March

GUMBOOT THROWING competitions

SKELLERUP WORLD BOOT THROWING CHAMPIONSHIPS
Saturday/Sunday 23-24 March, 10.30am start,
Age group: 10 – 91 years **Registrations close 17 March.** For more information:
www.taihape.co.nz/worldbootthrowingchamps

TAIHAPE GUMBOOT DAY® FAMILY FESTIVAL
Saturday 23 March from 10am till 3pm -
Gold coin entry
Live music, Games, Markets, Food, Workshops,
Competitions, bouncy castles and MORE!
www.taihape.co.nz/gumbootday2019
Memorial Park

www.taihape.co.nz **facebook.com/gumbootday**



RANGITIKEI GOLF CLUB

Wednesday 13 March - stableford: Dan Scotson 42pts, Neville Berendt 40pts, Pat Pearce & Michelle Mossop 38pts, Matt Brown 37pts, Lynne McDonald, Kevin Payne, & Neil Atkins 34pts, Bob Pittaway & Peter Young 33pts, Ann Robinson 32pts. Twos: Lynne McDonald & Dan Scotson 12th.

RANGATIRA GOLF CLUB

10/3/19 McVery Crawford tournament – stableford – senior ladies: M McAlley 44, D King 38, N Martin 37. Junior ladies: J Lambert 42, K Fallaver 39 K Early 39, M Young 38. Senior men – T Boxall 44, K Small 40, S Durrant 37, P Rooney 36, G Gardiner 36, R Geary. Intermediate men – C Leary 45, R Lambert 41, H Lilburn 40, B Callon 39, A McAlley 39, S Martin 38, H Bremner 38, W Lampp 38. Junior men - D Fallaver 45, R Wilson 41, M Gilmour 40, B White 39, J Rainey 37. Non golfers 18 holes - A Lock 44, P Andrews 40. Non golfers ambrose - Weka Hacker - gross 57; Sam, Ham, Wilf - gross 60. Twos: A Lock #14. Accuracies #4 M McAlley, #8 D King, #12 M McAlley, #14 N Martin. 9 hole - A Penning 27, M Woodruff 22, M Donlon 21, T Brandon 21, G McConachy 20. 13/3/19 women - Dulcie Howie - par - J Griffiths +6, M Young +5, C Gregory +2, D King +2. Twos: N Martin, R Rainey, N McCoard. 13/3/19; 9 hole - stableford – J Virtue 26, D Gregory 22, V Travers 22.

MARTON GOLF CLUB

Sat 16 Mar; our course is still in great condition, thanks to our fairway watering and so our members are making the most of it and producing some impressive scores. Graham Marshall had the best nett in the medal round, with a 61. Other results: Graham McLay 66, Colin Williams, Desi Singer 67, Barb Pratt, Adrian Duncan, Bruce Craig 68, Tom Bliss-Bennett, Tim McVery, Darin Arnott, Troy Calkin, Terry Hammond 69, Dick Fullerton-Smith, Rodger Yorke, Bryan Cameron 70, Ron McDermott 71. Twos: 12th Graham Marshall, Alan Bates, Troy Calkin. FBH: Calvin Field, Pete Singer. Duty: Sat March 23: Graham Marshall. Bar: Shay Melis, Neville Abbott. Sun March 24: Rodger Yorke

MARTON NINE HOLE GOLF

30 members turned up for a stableford day. Results: 1st division: 1st Tim Brandon 19 cb, 2nd Brian Shaw 19 cb, 3rd Mike Morland 19 cb. 2nd division: 1st Bob Barrett 24, 2nd Ewen Grant 20. 3rd division: 1st Gillian Campbell 20 cb, 2nd Marg Linklater 20cb, 3rd Mona Barrett 19. Lucky card winner: Madeline Powell. Raffle winner: Brian Willis. Next week starters: Louise Craig and Brian Short. Cards: Richard Peirce and Barry Florence. Kitchen: Madeline Powell. We had 28 members playing medal and putting. Results: 1st division: medal 1st: Louisa Craig 32. Putting: 1st Brian Short 13, 2nd Linda Brandon 14, 3rd Mike Morland 15. 2nd division: medal: 1st Barry Florence 35. Putting: 1st Mike Donlon 12, Bob Barrett 14, 3rd Ewen Grant 16. 3rd division: medal: 1st Marion McPhee 35. Putting: 1st Tom Trotter 13, 2nd Mona Barrett 14, 3rd Madeline Powell 16. Raffle winner: Linda Brandon. Lucky card winner: Brian Hamerton. Next week starters are: Brian Hamerton and Brian Shaw. Cards: Sheena Marshall and Tom Trotter. Kitchen: Lyn Shaw.

HAWKESTONE GOLF CLUB

Tuesday 12th The Pavemaster Bogey competition. Les Neumann 3+, Joy Stantiall 2+, Jan Van Loo 1+, Barry Parlane 1+, Rae Karatea & Gary Burgess sq, Lyndon Churchill & Brian Philips 1-. Two; Rae Karatea No 11. Nearest pin; Gary Burgess. Saturday 16th Central ITM Jock Wasson memorial 24 hole stableford competition. S/men; R McDermott 53, G Forbes & G Stanton 52, D Rohde & G Franks 44. J/men; P Scott 56, D Todd 55, M Carroll 48, G Edwards 45. Women; S Wells 45, L Pickford 33. Twos; N Skelton & D Todd # 7. Jackpot # 16 not struck. Nearest the pins; s/men - Glenn Cunningham. J/ men - Phil Scott. Women - Letitia Pickford. Taimui challenge; Matt & Toddy lost to Rex & Dave R. Next challengers: Pinky & Geoff. Coming events; Tuesday golf; 9.30 am tee off. Saturday 23rd: Glad Beaman pairs, round 2; teeing off from 11.00 am. Visitors and casual golfers play 9, or 18 holes for only \$10. New members: please enquire about our membership rates. All welcome. Enquiries contact Grant; 0210 572 931.

TAIHAPE GOLF

The Taihape A grade pennants team hit the road to play against Foxton in Feilding - searching for a much needed win to progress up the points ladder. The foursome teams got off to the best start of the season; winning two of their three matches. D Thompson & A Thomas won on the last 1up, D Dick & M Booth won 2/1, and the Mickleson pairing lost 6/5. The afternoon singles could not muster the three points required, reducing the Taihape team to a narrow loss of 4 to Foxton's 5 games. The afternoon results were: Danny Mickleson lost 5/3, Jimmy Mickleson lost 6/5, Alan Thomas lost 6/5, Duane Dick won 3/2, Matthew Booth won 6/5 and Denny Thompson lost 5/4. The team's next game is against Hawkestone in Wanganui, in two weeks' time. In the local haggle, Ken Cribb edged out the haggle with 42 points, over Dale Hunt's 41 points. Barrie Randall made 40 points and the stand-in club captain, Nick McGuinn also had 40 points. James Fannin secured 5th spot with 38 points; Gary Thomas and JJ Walker both had 37 points; Kevin O'Brien finished on 36, while Briany Bristol and John Gilbert both made 35 points. K O'Brien slotted the only two of the day, on the 14th and John Gilbert claimed the novelty long putt prize. This Sunday, the Jack Evans par round is teeing off from 12 noon, with the Indian raffle being drawn at the workingmen's club from 6pm, on Friday evening.

ST FRANCIS INDOOR BOWLS

We had our first night of indoor bowls for the 2019 season on Tuesday March 12, with a good turnout of sixteen. We welcomed one new player; Barry. We played three games and the only team with three wins was Ray and Barry. Andy won the raffle. On our second night of bowls this week we played two games of 10 ends of triples.

The only team to win both their games were Lyn Phillips, Rose plank and Erin Peddie. Rose also won the raffle. Next week will be another normal club night, so we hope to see you all there. Everybody is welcome to come along and have a go.

MARTON BOWLING CLUB

Wednesday 13 March; results for Johnston Park visit - skips: 1st Peter.A. 2nd Joanne. Booby prize Colin Corlett. Threes: 1st P. Rose. 2nd Josie. Booby prize Helen. Twos: 1st Colin Coffey, 2nd Craig. Booby prize Noeline. Leads: 1st Joy. 2nd Paul. Booby prize Bev. Friday 15 March; club corner to corner winner: Kevin Mullany. Saturday 16 roll-up results - skips: 1st Ray Harding - 2 wins, 13 ends 24 points. 2nd Murray Coleman - 1 win, 11 ends 18 points. 3rd Josie Bismark - 1 win, 10 ends 17 points. Twos/ leads: 1st Ces Allan - 2 wins, 15 ends 24 points. 2nd Sharon Gordon - 2 wins, 14 ends 22 points. 3rd Joy White - 1 win, 11 ends 18 points. Sunday 17 March; Marton shamrock shuffle 3 bowl triples tournament - 20 teams from Ashhurst, Terrace

End (P.Nth) x5, Feilding and Marton enjoyed a great day of bowls and laughter in the sunshine, followed by a much appreciated afternoon tea and cool beverages. Congratulations to the winning team: Eddie Harding(s), Laurie Jones, Roger Senior (Ashhurst) with- 4 wins, 25 ends 54 points. Runners up: Aaron Paulger(s), Chance Hausman, Jared Coleman (Marton) with- 4 wins, 25 ends 39 points. 3rd place: Fay Jones(s), Joyce Williams, Jenny Brown (Ashhurst) with- 3 wins, 24 ends 53 points. (I will mention there were 4 teams in close contention for 3rd place, all with 3 wins and 24/25 ends, resulting in a countback.) We thank Marton Panel & Paint, PPG Paints & Guthrie Bowron for the excellent prize table and the family-sized bbq raffle, valued at \$800 and won by Aaron Paulger. Best dressed player of the day went to Frank Cottis, sporting a magnificent beard and hat combo. Thank you to all the people who make these things possible. Your hard work does not go unnoticed, or unappreciated. See you all again next year! Up-and-coming events: Friday 22 March @ 5.30 pm, club corner to corner final. Sunday 24 March @ 9.30 am, \$1000 triples tournament. You have to be in to win folks! Entries in by Friday 22 March please. Thursday 28 March @ 9.30 am, Hospice 3 bowls triple tournament. Entries by Wednesday 27 to support this very worthwhile cause - thank you. Sunday April 28 @ 1pm; Marton Bowling Club closing day.



Above: Marton Bowling Club shamrock shuffle tournament winners in green (l to r) Lawrie Jones, Eddie Harding(s), Roger Senior (Ashhurst).

CROQUET MANAWATU-WANGANUI

Association croquet interclub results - final week. There was an exciting finish to competition for the Ida Wood memorial plate. Marton/Wanganui went into this round with a one point lead over Rose Gardens but with a substantial advantage in net hoops. To take top place, Rose Gardens had to win by one more match than Marton/Wanganui and by substantially more net points. In the event, RG did the best they could, with a 3-0 victory over Feilding and with a net hoop count of +47 for the match. However, this was in vain, as M/W beat Levin 3-0, to take the trophy by one point. Congratulations to Marton/Wanganui on winning the Ida Wood memorial plate, well done to RG for their valiant effort and to Levin and Feilding. Marton/Wanganui 3, Levin 0. Individual results: Clair Brown (MW) bt Margaret Troup (L) 16-15; Selwyn Johnson (MW) bt Rosemary Eyres (L) 16-5; David Winnill & Lyn Johnson (MW) bt Judith Hunt & Betty Anderson (L) 26-17. Rose Gardens 3, Feilding 0. Individual results: Monica Huismann (RG) bt William White (F) 26-3, Melva Jones (RG) bt Janice Coleman (F) 26-6; Annabel Neall & Vic Wilson (RG) bt Sandra Haycock & David Harrison (F) 11-7. Final points: Marton/Wanganui 13 (+61), Rose Gardens 12 (+71), Levin 7 (-19), Feilding 4 (-113).

MARTON CROQUET

Monday 11 March: association croquet. David Winmill and Tom Martyn 26 def 14 Graeme McIntyre and Brenda Isaacs, Claire 18 def 8 Annette Winmill, Selwyn Johnson 26 def 5 Gordon Thompson. Golf croquet. Linda Hughes 7 def 1 Maria Beamish. Levels champs: Lyn Johnson 7 def 5 Marilyn Vallance, Lyn 7 def 5 Linda. Wednesday 13 March: Beverley Brownlies and David 7,6 def 2,4 Brenda and Jenny Vickers. March 14 - Marton defeated Levin, three games to five, at Association Croquet. Saturday 16 th March. AC, David 26 def 21 Tom, Graeme and Selwyn 14 def 9 Annette and Lynn. GC: Linda Hughes 7,5 played 4,7 Marilyn Vallance.

MARTON SARACENS CRICKET

Matt Burke Engineering Saracens' season could end on a real high, if they can repeat last Saturday's good form, when they take on Wanganui United in the 40 over competition final at Victoria Park this Saturday. After finishing in 4th place, at the end of the regular season, Saracens took on 1st place Wanganui Renegades in Saturday's semi-final - a team that had comfortably beaten them the week before. Saracens captain Andrew Spence won the toss and, after some deliberation (as the track looked ideal for batting) put the opposition in. His reasoning was that Saracens' strength was in the bowling attack they were fielding on the day. This proved to be an inspired decision, as the 4-pronged seam attack all bowled outstandingly, to have Renegades all out for 116 in just 30 of their 40 available overs. The Marton side should probably have dismissed their opposition for around 80 but the Renegades tail order put on something of a recovery. Jayden Lane took 0 for 24 from his 6 overs, Brett Cunningham 3 for 8 from 6.4 overs, Robert Daines 1 for 43 from 8 and Aaron Smith was the best, with 6 for 29 from 8.

Public Notices



South Makirikiri School

Enrolment at our school is governed by an enrolment scheme, details of which are available from the school office/website. Our home zone is available for viewing at <http://nzschools.tki.org.nz/> Applications for out of zone places for 2019 are now being invited. There is a limited number of spaces available across all age groups. An application for enrolment form is available on the school website, or from the school office. The deadline for receipt of applications for out of zone places is Monday 1 April at 3pm. If a ballot for out of zone places is required, it will be held on Monday 15 April. Parents will be informed of the outcome of the ballot within three school days of the ballot being held. If you live in the home zone and have not yet signalled your intention to enrol your child for 2019 and beyond, please contact the school (06 327 6617) to assist us to plan appropriately. Thank you.

Public Notices



RIVER AND DRAINAGE ENGINEERING SCHEMES CATCHMENT COMMUNITY MEETINGS - 2019

Each year meetings are held for ratepayers funding Horizons Regional Council's various Flood Protection, River Control and Drainage Schemes.

The purpose of the meetings is to report to ratepayers on the work carried out on the Schemes over the past year, and to discuss work proposed to be carried out during the forthcoming financial year. Scheme budgets and proposed rates for the 2019-20 year will also be presented and Councillors and staff will be available to respond to ratepayer queries on general Scheme issues.

This year's Rangitikei River Control Scheme public meeting has been scheduled as follows:

Rangitikei River Control Scheme
Friday 22 March - 3.00pm
Horizons Regional Council's Marton Service Centre, Hammond Street, Marton

Freephone 0508 800 800
www.horizons.govt.nz



PIRATES RUGBY FOOTBALL CLUB TAIHAPE (Incorporated)

AGM & SPECIAL GENERAL MEETING

7.00pm 27 March 2019

At 34 Kuku Street, Taihape

BUSINESS:

Wind up the club and dispose of assets



Marton School Annual Twilight Gala

FRIDAY 22 MARCH 4PM - 7PM

Come one, come all!!! There promises to be something for everyone – JJ Walters Touch tournament is not to be missed - there will be fierce competition!

Our popular White Elephant Stall will be well worth the visit.

Lots to see and do, including Andrew Wilson Magician, Baking, Harley Davidson Motorcycle rides, delicious food, Miniature Truck rides, Raffles, Mini Hot Rods, Live Entertainment, Bouncy Castle, assorted stalls, face painting, games and vehicles on display.

Taihape Historical & Museum Society Inc

ANNUAL GENERAL MEETING

Museum Hall. Monday 15 April 2019 at 7pm.

All welcome to attend.

Contact: Secretary - A Oliver 06 388 1822

Taihape Music Group Presents

MANAWATU OVERTONES

Sunday 31 March, 2019 at 2pm

St David's Church, Taihape

Admission \$15 at the door - children free

Afternoon tea to follow



Marton Rotary's

Pedal 4 Pleasure

31 March, 2019 (in conjunction with Harvest Fair)

Three courses - 15, 40 and 80kms

at 8, 9 and 10am

www.sporty.co.nz/pedal4pleasure or ph 06 327 6513

Sport continued on pg 11...

Rangitikei District Monitor

LOCAL SERVICES

Support Local Rangitikei Businesses



MARTON LAUNDROMAT

SELF SERVICE 5AM - 11PM

SERVICED 8AM - 5PM

ASK ABOUT OUR ELDERLY RUN. TUESDAYS.
06 327 5569. LOCALLY OWNED

Noticed this Space??

Get your business going...advertise right here - right now

Contact us
06 327 7881

HARTYS BUILDING & MAINTENANCE

Over 30 yrs knowledge & experience.

Renovations • Additions
Bathrooms • Decks

Phone Brett 021 960 536
or 06 322 1922 A/H

CENTENNIAL PARK DAIRY

OPEN 7 DAYS 7am - 7pm



176 BROADWAY, MARTON
PH 06 327 7398

COBHAM PLUMBING AND DRAINLAYING



LOCAL SEPTIC TANK CLEANING
& WATER TANK CLEANING

* Woodfire sales, repairs, installation
* Septic Tank & Effluent Systems
* Drain Cleaning Machine
* Chimney Cleaning

171 Broadway, Marton Phone 06 327 8918

DOMESTIC WATER SERVICES



0800 400 135

Layton Hammond 027 4421 629

TILER

Felipe Rodriguez

Installation
Repairs

Certified
Waterproofers

Mobile: 021 181 2072

Ph: 06 343 1234

Email: delchico1@outlook.com

No Job Too Small

Secondhand
carparts finder
service

MARTON PANEL & PAINT

Broadway Heights, Marton
Ph Ian on 06 327 7455

ROBBIES MECHANICAL SERVICES

SALES-SERVICE-REPAIRS
Mowers, chainsaws,
motorcycles and more

"All personally guaranteed"

404 Wellington Rd Marton
PH 06 327 7115

HARVEY AND CALKIN GLASS

Household Windows
& Car Windscreens
Troy Calkin

385 Wellington Rd, Marton.
Ph: 327 8750 A/H Ph 327 6917

TANK CLEAN

- Septic Tanks
- Water Tanks
- Grease Traps

Contact Tim Spetch
06327 7806
027 974 2445
timspecth@hotmail.com

HOGAN PLUMBING



Plumbers, Drainlayers
& Roofers
Natural Gas Sales
& Installations
Wood Fires

Phone 06-327-7838

BEN'S DINGO

FREE QUOTES

Hole Boring 250mm 350mm 450mm 600mm
Trenching 4 in 1 Bucket Rotary Hoe
Pole Sheds Water Lines Effluent Lines
Power Cables Section Work Urban Fence
Packages Cleaning Covered Yards Calf Sheds
Stables and more from this little digger!



Ben & Jackie Lucas
Marton

06 327 8792 027 684 1305



Registered Master Builders



RAYNER BUILDING Ltd



Houses • Farm Buildings • Concreting • Alterations • Additions

All qualified tradesmen

Ph: 027 2727 047

Lawnmowing

We Love to mow your lawns!

Free Quotes

Hedges, tree trimming, section
tidies, rubbish removal

0800 800 286

www.crewcut.co.nz

CREWCUT
LAWN & GARDEN

OHUTU MEAT PROCESSORS

...from paddock to plate...

Ph 06 388 0603

Alistair Mclean 027 232 4584

Nathan Mclean 021 0263 1534

WE TRAVEL

We now Vacuum Pack
We kill & process dog food
All small goods and gluten free

WATER CARTAGE

Ross & Karen Dear

Domestic Water Cartage

06 322 1745 & 027 4322 331

dear.karen01@gmail.com

168 Parewanui Road RD1

BULLS 4894

RL & KM Dear



RANGITIKEI SECURE STORAGE

Ideal secure lock-up for your

- Boat • Caravan
- Car • Household goods

and much more...

different sizes available for short or long term
PH 021 163 6399

TV REPAIRS

REDWOOD TV
TV & APPLIANCE REPAIRS AND INSTALLATIONS



- Aerial Installs
- Washing Machines
- Dishwashers
- Stoves
- Fridges
- TVs

Trevor Ph: 06-327 7258 | Mob: 027 662 2809
muntediv@xtra.co.nz

Your function specialist
for over 100 guests

Awapuni Racecourse, Palm. North

Lewis Jones

Ph 0800 11 FOOD (24 Hours)

email: creativecatering@xtra.co.nz

creative
CATERING

Heat Transfer Units • Freeview Aerial
Upgrades • Commercial Wiring •
Domestic Wiring • Home Automation
• Security cameras & alarms



Phone/text 027 280 4667
Office 06 327 5544

palmerston.north.central@laserelectrical.co.nz



MARTON HIRE
06 327 7112

- Outdoor Power Equipment
- Trailers/Chiller • Digger
- Temporary Fencing
- Portaloo's and more.

Enquiries welcome

VISION EXPERIENCE OPTOMETRIST



BROADWAY, MARTON
Phone 06 327 7589

PETER HULLIS TAIHAPE

1.8 T DIGGER HIRE
1 DAY 1/2 Day

06 388 1487
0274549297

Noticed this Space??

Get your business going...advertise right here - right now

Contact us
06 327 7881

mcilwaine - BUILDING SOLUTIONS

"No Job Too Small"

Qualified Tradesmen - New Housing,
Alterations and Additions, Joinery, Timber
Windows, Maintenance,
Light Commercial,
Farm Building, Concrete
Work, Aluminium Screen Doors



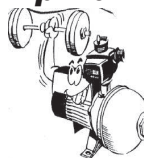
35 Russell St,
Marton Ph 06 327 4723

Water Pumps

"Call The Pump Man"

Just call 0274453 124

and Simon will
help you with your pump
requirements.
Expert sales and service
from the team at...



ALB DOWN'S CONTRACTING
ELECTRICIANS Ltd



Mechanical Repairs WOF Repairs
Tune-ups & services Tyres & Batteries
Auto Electrical Light Engineering

06 327 6979

8 Hammond Street, Marton
g-mechltd@outlook.com

Rangitikei/Wanganui

If you are contemplating selling your Farm or
Lifestyle then call Doug Glasgow, an experienced
and confidential Agent for an appraisal.

B 06 327 4732 H 06 327 3723 M 027 204 8640

www.pggwre.co.nz

PGG Wrightson Real Estate, 99 Wilson Street, Wanganui



For Hire

HARRISON'S
HireMaster
WANGANUI

26 CHURTON STREET PH 06 345 7017

MARQUEES • MACHINERY HIRE • PARTY HIRE & SALES

CHERRY PICKERS SCAFFOLDING PERSONNEL LIFTER

100% Wanganui Owned & Operated
www.hiremasterwanganui.co.nz

027 332 4417

Digger Hire

1.7 tonne digger
1/2 day and full day rates

Available 7 days a week

CONCRETE GEAR HIRE

Dry hire hand held concrete cutters

Walk behind floor saws

Concrete power float

Concrete breaker

HALF AND FULL DAY RATES PH 027 2727 047

WEEKEND EMERGENCY SERVICES

BULLS MEDICAL CENTRE
(06) 322 1222 8am-12pm - SATURDAY & SUNDAY.

Outside these times call 06 355 3300 to contact City Doctors, Palmerston North

PHARMACY
PLATT'S PHARMACY BULLS & MARTON PHARMACY - OPEN 'TIL NOON SATURDAYS

POLICE - 06 327 6555

POISON CENTRE - EMERGENCY
0800 POISON - 0800 764766

PLUNKETLINE - 24 HOUR
0800 933 922

AMBULANCE - Medical Emergency
call 111

MENTAL HEALTH SERVICES -
CRISIS INTERVENTION SERVICES
After hours & weekends 0800 653 358
OZANAM VILLA - WG - 06 345 4204

FREE 24 HOUR HEALTH ADVICE

HEALTHLINE

INCORPORATING *PlunketLine*

0800 611 116

A REGISTERED NURSE IS JUST A PHONE CALL AWAY

Business Notices

Century21 Real Estate

When you sell your home with your local Century21 Rangitikei Real Estate Agents, we will pay for **FREE PROFESSIONAL PHOTOGRAPHY** and **FREE TRADE ME** Advertising. Call today for a free appraisal.

MARK EDWARDS COLLEEN EDWARDS

027 670 2102 021 031 2442

CENTURY 21 REAL ESTATE WANGANUI

BRIAN BAILLIE
MUSICIAN

Solo, duo, or full band options available for all occasions.

Contact Brian
027 2299 303
brianbailliemusic@gmail.com
facebook.com/brianbailliemusician

For Sale In Memorium

Post Peelings, Sawdust and Firewood
Ph 06 322 1670
027 422 1670

Fisher & Paykel Fridge/Freezer
50/50. Near New.
\$350 ono
Ph Bev
027 445 2363

Rangitikei
District Monitor
online at
www.districtmonitor.co.nz

HARTLEY,
Joanne Leigh

It is one year since you left us.

It was too soon; we all had so much to do together.

We miss you mum - Leigh, Daniel, Lucas, William and Anna.

Memories are still very vivid and we think of you often - from mum & dad Tamblin and families and Mother Hartley and families.

Day is done; gone is the sun from the seas, from the hills, from the skies; all is well.

Safely rest Joanne.

God is nigh.

Public Notices

Hope & Heart Tribute to Christchurch
Marton Park, Saturday 23 March at 1pm

Alcoholics Anonymous
meets every Monday, 7.30pm
Friendship Club Hall, Morris St, Marton

LEARN TO FLY WITH THE WANGANUI AERO CLUB
Phone 06 345 0914
www.wanganuiaeroclub.co.nz

Marton Music Society
AGM
Sunday 24 March at 2pm
Friendship Hall, Morris Street, Marton
Ingrid Culliford performs Schubert and Mozart.
Afternoon tea. All welcome.

CHURCH SERVICES

MARTON BIBLE
Where you can find the meaning of life

Sunday March 24 10am

Family Worship Service and Communion

Speaker:
Richard Print

Subject:
Unity - a better way
Phil 2: 1-11

All Welcome

ST MARTIN LUTHERAN CHURCH

94 Pukepapa Rd
Marton

Sunday March 24 9.30am

Worship Service with Holy Communion

Led By:
Pastor Warren Paltridge

Everyone Welcome
Phone 06 327 8092

CHRISTIANITY EXPLAINED EXPLORED

What is the meaning of salvation?
Can I lose it?
Friendship Hall, Morris St, Marton.
Tuesday 7-9pm
All Welcome.

ST FRANCIS XAVIER CATHOLIC PARISH
Weekly Masses
Monday - Thursday - Friday
Marton 7.45am Adoration - Mass 9am
Bulls Tuesday Mass 10am
Marton Wednesday Mass and Adoration 10am
Weekend Masses
Marton Saturday Mass 10am - followed by Reconciliation
Bulls Saturday Mass 6pm
Marton Sunday Mass 9.30am - 2pm Devotions
Rata Mass 9am, 4th Sunday of month. Whangaehu masses suspended.
FR PETER BROCKHILL
RUSSELL ST, MARTON
PH 06 327 7840

ST ANDREW'S PRESBYTERIAN CHURCH MARTON

This Sunday: Family - friendly service at 9:30am.
This week's message will be from John 4: 43-54, "The Second Sign - Jesus the Life-Giver".
Sunday School for all children

Other weekly activities:
Kids on Broadway (school years 5-8) Wednesday 4:30 - 6pm
SALT Youth (high-schoolers) Friday 7-9pm
Companionship: 11:00am to 2:00pm Wednesday - drop in for some fellowship and fun
All Welcome

Rangitikei Anglican Parish
WORSHIP SERVICES

Sunday March 24
8.00 & 9.30am St Stephen's, Marton
9.30am St John the Baptist, Hunterville
9.30am St Thomas', Sanson

Wednesday March 27
10.00am St Stephen's, Marton

Contact: Parish Office 06 327 8398

BULLS TURAKINA PRESBYTERIAN CHURCH
St James', Daniell St, Bulls
9.30am Sunday March 24, 2019.
Rev Alan Shaw. Morning tea to follow.
All Welcome.

Funeral Directors

BEAUCHAMP
- FUNERAL HOME -

Proudly serving the Rangitikei since 1981
Peter, Julie, Emily and Anthony Beauchamp

Call us on 06 327 7029 to discuss your needs and allow us to continue to serve and support our community with the guarantee of excellence and unbeatable value that has been our trademark for the last 30 years.

We do not charge for travel within the Whanganui, Rangitikei or Manawatu areas

Beauchamp Funeral Home and Cobham Chapel
18 Morris St, Marton
P: 06 327 7029 e: admin@beauchamp.co.nz w: www.beauchamp.co.nz

Liz Rayner - Owner/Editor/Publisher
Allan Pond - Advertising

Editorial & advertising produced by R & R Media Ltd
for Rangitikei District Monitor,
355 Wellington Rd, Marton

Rangitikei
District Monitor
Reaching Rangitikei Readers

Phone | 06 327 7881 | monitoradvertising@xtra.co.nz
Enquiries Email | districtmonitor@xtra.co.nz
Website | www.districtmonitor.co.nz

Published weekly and delivered FREE to Marton, Bulls, Turakina, Hunterville, Ohakea Base, Mangaweka, Taihape

ADVERTISING DEADLINES
DISPLAY ADVERTISEMENTS
12 noon Tuesday
CLASSIFIED ADVERTISEMENTS
Noon Wednesday
PH 06 327 7881 FAX 06 327 5162
Box 79, 355 Wellington Rd, Marton

PROUDLY PRINTED BY
Webstar
www.webstar.co.nz



Sport continued from pg 8...

Phil Galpin bowled 1 over for 11 runs. Spence was in top form behind the stumps, effecting a sharp stumping and holding 2 catches. Jayden Lane, Smith and Thomas Westwood also took catches; Westwood's an outstanding one-handed 'grab' at 1st slip. Mike Jacobs, who always gives 100% in the field, injured himself attempting a run-out and had to leave the match to get his right arm checked out at the hospital. It proved to be broken and he didn't get back before the game ended, meaning Saracens would bat 1 short. Opening batsmen Allan Pond and Spence gave the Marton team another sound start, seeing off the opening attack and putting on 31 for the first wicket. Pond was out for 7 at this score. Spence followed for 20, with the score at 35; Galpin for 0 at 37 and Westwood for 5, when the score was 45. Jayden Lane went soon after, with his score also 5 and Saracens looked to be throwing away their chances of making the final. Freddie Lane and Rhys Watson set about a recovery and took the total through to 65, before Watson went for 3. Daines contributed a quick 14 and was out at 88. Smith joined Freddie Lane at the crease, with 29 required for victory and 7 overs remaining. Lane continued to defend well and pick up 1s and twos. Then Smith ended the match quickly, striking 2 fours and 2 sixes to take Saracens to 117 for 7, in the 36th over. He finished on 20 not out and Lane 17 not out. Aaron Smith was the obvious pick as J Maher & S Crawley Partnership player of the day but Freddie Lane deserved a lot of kudos for guiding the side through the difficult middle period and taking them within reach of the win. Mike Jacobs was awarded dick of the day...for leaving early! This Saturday's final (Saracens' first for a few years) will be played at Victoria Park 1, starting at 12.30pm.

TARGET SHOOTING MARTON

The high scores of last week vanished from the scoreboard this week but, overall a closer competition. Young Jacob Harris achieved a PB with a score of 188.4 and well deserved. A reminder that our sport and business competition gets started on Wednesday 27 March; then Thursday 28 March and, the following week; Tuesday 2nd and Wednesday 3rd April. Entry forms are available from any club member. Gary Cuff 97.04 97.05 194.09, Peter Lissington 98.06 95.06 193.12, Tony Bayler 96.04 97.04 193.08, Kayla Gledhill 96.03 97.05 193.08, Samantha Gledhill 96.04 95.02 191.06, Brent Read 96.03 95.02 191.05, Don Hamilton 93.02 97.03 190.05, Dave Gledhill 93.03 95.03 188.06, Jacob Harris 92.02 96.02 188.04, Alan McCubbine 93.04 94.04 187.08, Fred de Burgh 92.03 95.02 187.05, Wayne Hunt 92.01 94.03 186.04, Allan Wright 93.02 93.01 186.03, Guy Forster Pratt 89.02 93.02 182.04, Graeme Sixtus 86.01 92.03 178.04, Bruce Galpin 89.02 89.01 178.03, Kevin Moody 89.02 82.00 171.02.

Agility at Masters Games

Recently an excited Happy Paw dog agility team (consisting of Jed, his sister Skye and Babybelle) jumped happily into their car to head off early to the Taranaki Masters Games in Hawera. A bit of fog accompanied them on their way to Hawera but the day promised to be a nice one and indeed the sun was shining! At the Hawera Dog Training Club, they met up with a few agility friends, furry and humans. The atmosphere was nice and relaxed. Erin Ball, course designer and judge, had prepared nice courses. They had a few challenges in them, but nothing competitors couldn't handle. Yes, there were a few handling errors - dogs forgetting their listening ears, or doing their own course but, as well, there was lots of laughter throughout the day. At the end of the day, a nice collection of 2 silver and 2 bronze medals said it all: the Happy Paw Agility team did well and was on its way homeward.

Right: The dog team from Turakina relishing its recent success at the 2019 Taranaki Masters Games.



Harvest FESTIVAL

Featuring

Simon Gault

Sunday March 31st
10am-4pm

Great Food, Great Stalls, Great Entertainment
ALL DAY.

Enquiries to projectmarton@extra.co.nz
www.martonnz.com 021 524585

CELEBRATING
Elope
- to the
Country
A HARVEST WEDDING
www.martonnz.com

THE LION
FOUNDATION

Pub Charity.

RANGITIKEI
DISTRICT COUNCIL



Project Marton

What's on at the Festival...

The beer is brewing, the scarecrows are out on display and the pumpkins are ready for harvest, which means it's almost time for Marton's Harvest Festival. In just over a week, on Sunday 31 March, Marton Park will come to life with toe tapping tunes, stalls, celebrity chef Simon Gault, a free circus zone for the young and, for the first time, a harvest wedding for the winners of our Elope to the Country competition. Bring your appetite, as we have a great range of food vendors waiting to excite your taste buds. Head on down to Marton Park, between 10am and 4pm and let your hair down, enjoy the music, soak up the atmosphere, take advantage of all the free activities and find all the gifts you need for your family and treats for yourself. Big, small, decorated, baked - pumpkins galore! The Marton Harvest Festival is the place to bring your pumpkin creation, including Biggest Pumpkin, Decorated Smallest or Ugliest Pumpkins, or your best pumpkin pie. Just get them there by 10 am on the day and go in to win, or if you've grown a giant pumpkin and think your pumpkin will be heavier than 100kgs, please call Liz Rayner, District Monitor on 327 7881 to arrange for it to be weighed on the 30th of March. Make sure you have your homebrew entered by 11am so that you have a chance to win the fantastic prize of an all-expenses paid trip to the Good George Brewery in Hamilton, including lunch and tastings. Celebrating our history, our heritage, our culture and our identity as a rural New Zealand town, we will again be hosting a stunning display of vintage machinery, tractors, pumps and a traction engine. Mark this in your diary and bring your friends and family.



HEY WATERBOY!!!!!!

IS THE TAP TURNED OFF?



**PINK BATTS
R2.4 WALL
(COVERS 12.1M2)**
ONLY \$90.00
BALE

**200 X 50 H4
RETAINING
WALL
5.4M ONLY**
\$5.50
LM

**14 x 100
BUGLE SCREW
BUCKET OF 500**
\$100.00
PER BUCKET

**90 X 45 H3.2 G8
GREEN GAUGED
4.8M ONLY**
\$3.00
LM

**GRIZZLY ULTRA
TOUGH GAFFER
TAPE
50MM X 18M ROLL**
\$8.50
EACH

**SEALANTS
CARTRIDGES
SIKA/SELLEYS/BOSTIK**
25% OFF

ALL PRICES INCL GST
40 RACECOURSE AVE - MARTON
PH 06 327 5458

CENTRAL

REAL ESTATE

THE WATSONS
ROSS WATSON REAL ESTATE MREINZ

LOWER AGENCY FEES OF 3.5%+GST TO SELL YOUR HOME

Phone 06 327 6690 Email: martonrealestate@gmail.com
420 Wellington Rd, Marton Trademe.co.nz

Licensed Real Estate Agent (REAA 2008)

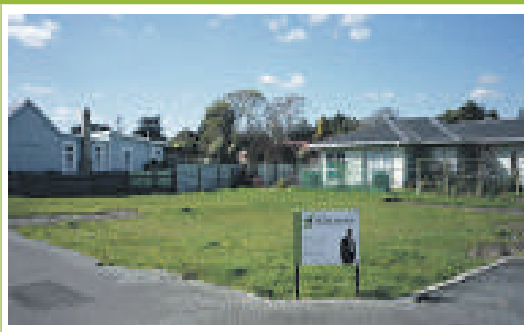
Phillip Mullins m: 027 203 2743 a/h: 06 327 6014



**Try The Watsons -
Smart Commission
Rate of 3.5% +
GST when you
List, Market, and
be SOLD sooner
than you think with
No Advertising
or Marketing or
Photography Fees.
Call Phillip today
027 2032743.**



505 Wellington Road, Marton
LOOKS CAN BE DECEPTIVE
This property is like an unhatched butterfly; waiting to be appreciated and admired when it is fully developed. The basics seem good and sound, with plenty of space inside - 3 bedrooms, open plan kitchen and dining. Separate lounge with logfire. Large double garage and workshop space, plus carport. All set on a manageable 1/4 acre that backs onto the Tutaenui Stream. Realistically Priced to sell at \$255,000. No Open Homes. Viewing by Appointment Only.
Property ID: M1365



143 Broadway, Marton
RESIDENTIAL SECTION
Are you thinking of your retirement and need a section that is close to town to build your low maintenance dream home? Then this is the ideal site: being a 720m² flat corner section, making it an easy site to build on. Located approximately 200 metres from the centre of town, giving you easy access to shops, churches, and medical centre. Services located in road frontage. Realistically priced at \$80,000.
Property ID: M1315



31 French Street, Marton
FRENCH STREET VILLA
Step onto the property ladder with this 4 bedroom villa, set on a Kiwi quarter acre. 4 large double bedrooms - or 3, plus 2 living rooms. Dining/family room thru to kitchen. Big backyard for the kids to play, plus garage/workshop. Add your decoration taste and some colour and you have a home for under \$200,000 - Realistically Priced to sell at \$189,000.
Property ID: M1361



7 Beaven Street, Marton
DECEPTIVELY CAPTIVATING
Old World Cottage Charm set high on Beaven St, with energy saving solar panels. 3 bedrooms, plus office or studio off the dining room, with access to courtyard. Dining and informal living room, with logfire heating. There is room for everyone in the generous lounge. The 1,012sqm section is well fenced, with private and peaceful backyard. Ideal home for the family, or the creative at heart.
Property ID: M1346



35 Ahuru Street, Marton
RESIDENTIAL SECTION
This 668m² flat section, with services at the road front, will suit a new, or relocated house, or even perhaps a motorhome base. Located on the eastern side of Ahuru Street, it offers all day sun for your new home. Don't delay, as this is 1 of only a few vacant sections left in Marton at the realistic price of \$59,000.
Property ID: M1358

