

Honour for Marton St John volunteer

Graeme Bradley joined a very special group last month, when he was made a Member of the Order of St John.

Graeme says the honour is equivalent to a Queen's Service Medal and, like the QSM, must be approved by the Queen.

"It starts with a nomination from the local committee, then goes up the chain, until it gets final approval. There were 24 people made Members of the Order at the ceremony, at St Pauls Cathedral in Wellington and eight people got higher awards," Graeme says.

The award came after 15 years of volunteer service with the Marton branch of St John. Graeme started out as a health shuttle driver.

"We started with three drivers, each doing one run a week, for local renal patients going to dialysis. Now there are 20 volunteer drivers and we do up to four runs a day."

Graeme and his wife Elaine co-ordinate the shuttle runs, putting together clients, vehicles and drivers to make sure everyone gets where they need to be.

"We do everything from picking up someone to get them to a GP appointment, to taking people to Wellington for specialist appointments. If it's health-related, we can do it - whether it's a hospital appointment, GP, dentist, physiotherapist. Whatever it is, we can organise it. We also take people to WINZ for appointments."

As well as 15 years on the health shuttle run, Graeme has spent nine years on the local branch committee, including a term as chairman. He also looks after maintenance on the four health shuttle vehicles, making sure they're up to date with warrants and servicing and keeping them clean. "We do a lot of miles, so it's important to keep an eye on those things."

Reflecting on why he's kept volunteering for so long, Graeme says the best thing about being a health shuttle driver is the variety of people he gets to meet. "Often people are making regular trips, so you get to know them pretty well," he says.



Marton St John volunteer Graeme Bradley shows the insignia of a Member of the Order of St John, recently bestowed on him, for long and dedicated service. Story and photo Belinda Howard.

FARMERS

WE OFFER...

Direct Drilling and autumn cultivation
Hay straw and balage sales and processing.

BRUCE GORDON CONTRACTING LTD

CALL US ON 0800 CROP IT (276748) or 063276094

GK SKOU TRANSPORT

LIVESTOCK AND GENERAL TRANSPORT

37 Kensington Road
MARTON

Ph 06 327 6424
027 442 7463

Email:
graeme.skou@xtra.co.nz

Big enough to compete - small enough to care



MARTON PRINT YOUR LOCAL PRINTERY

B/W&COLOUR PHOTOCOPIES

A5 TO A3

PRINTS FROM YOUR PHONE

CANVAS PHOTO BOXES

FAMILY HISTORY POSTERS

FLAGS & SIGNAGE & VINYL LETTERING

SELF PUBLISHED BOOKS

CALL IN 28 HIGH STREET OR CALL ON 06 327 7417



LA-Z-BOY
FURNITURE GALLERY®

HALF YEARLY *Sale*

25-50% OFF ALL LA-Z-BOY*



50% Off

EURO MODULAR (Selected leather)
WAS \$5,999 NOW \$2,999*

Shop Hours:

Monday - Friday 9-5pm

Saturday 9-1pm

Ward's FURNITURE LTD
VISIT OUR MASSIVE SHOWROOM TODAY



219 Broadway, Marton

Phone: 06 327 6045

Email: ward.furn@xtra.co.nz

Web: www.wardsfurniture.co.nz

Marton playground upgrade one step closer

Marton Development Group (MDG) has received another boost for its playground project. Thanks to the partnership between Gallagher and Farmlands Marton, just over \$10,000 was raised in store during its May promotion “It’s really those customers throughout the community, who came in and bought their Gallagher gear at that time, that can celebrate this win” says store manager Steve Willis.

MDG Co-Chairs Lucy Skou and Brenna O’Neill were thrilled to accept the cheque from Gallagher animal management territory manager Mark Ward.

Brenna says “With partnerships like this, we will reach our goal before we know it. Knowing the Marton community is behind us and supporting this fantastic opportunity for our town keeps us and the MDG committee driven.”

Design consultancy firm Boffa Miskell, which is the contracted planner for the upgrade and play project, visited Marton and is now working to deliver the first round of plans for review by MDG.

Rangitikei District Council’s annual Residents’ Survey highlighted new or upgraded playgrounds as one of the most commented upon topics. A survey was circulated via social media and Marton schools which asked respondents to share their favourite things to do around Marton, as well as any ‘wishlist’ items for a play area. Those answers were then collated and passed to Boffa Miskell to include in its design.

If you or your business is interested in supporting the Marton Memorial Park Upgrade and Playground Project with Marton Development Group, please email martondevgroup@gmail.com.



A cheque worth over \$10,000, was handed over to the Marton Development Group on Monday from a Farmlands and Gallagher May promotion aimed towards the Marton playground upgrade project. From left: Dave Burne and Farmlands store manager Steve Willis, Mark Ward Gallagher animal management territory manager, Lucy Skou and Brenna O'Neill from the Marton Development Trust and Bain Simpson who purchased the most product in the promotion.

Dave's Homekill
For all your butchering requirements

Operating in Rangitikei & Manawatu

28 Terrace St Marton - Ph 063275551

Taihape Panel
Call Us Before You Call Your Insurance Company

Vehicle Insurance/Rust Repairs
Assessments for all Insurance Companies
Courtesy car available

Contact Earl Rae
06 388 1605 or 022 073 3011

Division of
MARTON PANEL & PAINT

FOR ALL YOUR TRAVEL NEEDS CONTACT
NIGEL BUCK 06 388 1008

helloworld

helloworld Taihape 108b Hautapu St
taihape@helloworld.co.nz

Find your happy place.

TAILS & TRAILS DOG CLUB

All dogs welcome.
Saturdays at 9am
Sir James Wilson Park
www.tailsandtrails.nz
tailsandtrailsdogclub@gmail.com



Some of the amazing student creations in the South Makirikiri wearable arts showcase.

Want a Job?
Get Qualified!

Starting soon!
FEES FREE.
govt.nz



Courses in Marton

- Agriculture (Vehicle Machinery & Infrastructure)
- Building & DIY

www.agchallenge.co.nz
0800-348 8215



Ag Challenge
NZQA ACCREDITED PRIVATE TRAINING ESTABLISHMENT

Wearable arts wow

South Makirikiri School held a Wearable Arts Makirikiri (2019 WAM) last Thursday 27 June.

Rangitikei College Hall was filled with many parents and families who came to see the culmination of a term's work in a wearable arts showcase. Principal Greg Allen says, “We had approximately 80 outfits, ranging from hats for the junior school through to complete head to toe costumes from senior students. The students had spent the past 9 weeks working through technology design processes, through to trialling designs and materials that could be used. Students had four categories to choose from and could work as an individual or as a team. The categories gave scope for the students to explore a variety of areas, Rangitikei, Mythology, Protect Yourself and Transform with Mythology being the most popular amongst the students. Having students collaborating for an extended length of time meant they developed many skills along the way including co-operation, managing time, delegation and, most of all, creative problem solving. Students made trial designs and modifications, adapting designs as they progressed. “The designs were varied and with unique features that as the final pieces came together you could see each group’s creativity come out. Each outfit was paraded down the catwalk with descriptions presented by fellow students. Judging was an incredibly difficult job, as in each category, a runner up and the winner had to be identified. Judges were Anne McDonald, Raewyn Turner and Gaylene McConachy. “The students all did an amazing job and the resulting outfits, or designs, made everyone involved very proud,” says Mr Allen.

AT THE COUNCIL

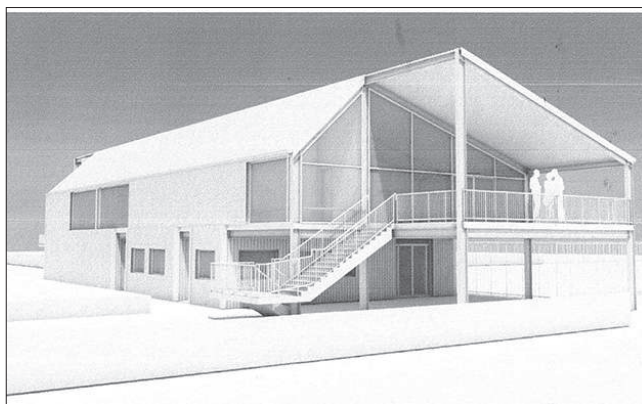


Council commits to new Taihape park building

Taihape's Memorial Park will see a new two storey amenities block and community space after the RDC voted to complete the project, subject to a funding commitment from the Taihape Club and the community.

Cr Hamish Gordon indicated to the council meeting last Thursday that the Taihape Club was willing to fund \$500,000 towards the project. Council had four costed plans to choose from. Two were for a single storey, with room to add a second storey. Two were for a two storey building, with one needing the community to pay to complete the second storey and came in at higher price. Councillors chose the option to complete the project with community support.

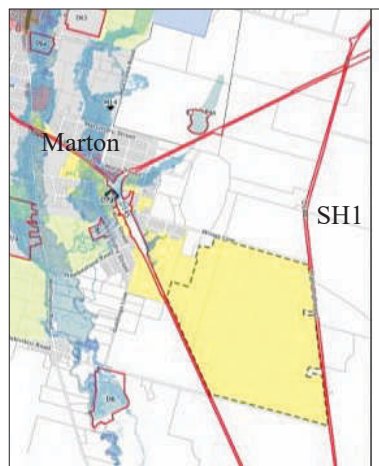
Council's next step is to draw up a Memorandum of Understanding (MOU) with Taihape groups involved and add timelines for the project which has been under discussion for well over a year. A final plan of the building is yet to be drawn up and put before Taihape but a professional estimate of the overall cost is expected to be about \$2.935M.



A concept-only plan, looking from the north, of a new amenities and community building for Taihape Memorial Park.

Major industrial re zone plan in Marton

Council is proposing to rezone an area south of Marton, from rural to industrial to address a shortage of vacant industrial land in the Marton area. It is a change to the District Plan and requires consultation.



The area, indicated in the photo left, in yellow, has boundaries on Wings Line, SH 1, Makirikiri Rd and the NI Main Trunk Railway.

Maps indicating the area in question and a report outlining the purpose of the zone change and potential implications, are available on the Rangitikei District Council's website.

The report indicates a need for industrial land in the region identified by Accelerate 25 regional growth study.

Six growth areas were identified in Rangitikei. They include tourism, sheep and beef farming and processing, land use intensification, manuka honey, fresh vegetables, poultry and grain processing and forestry harvesting. Rezoning the land could allow the Marton area to capitalise on the development, as a major freight hub, due to its location and the confluence of SH1 and SH2.

RDC invites written feedback on the proposal until 21 July 2019. You can send a letter (addressed to the Council at Private Bag 1102, Marton 4741) or email to Council info@rangitikei.govt.nz

All feedback will be considered at Council's Policy/Planning Committee meeting on 8 August 2019 and the outcome considered at Council's meeting on 29 August 2019.

Formal public notification of the proposed zone change (if approved) will follow, as required by the Resource Management Act, with an opportunity for people to make submissions.

Students excel at Pacific Fusion



Rangitikei College's Pasifika Group competed in the annual Pasifika Fusion event held last Thursday at the Regent Theatre in Palmerston North. It was an explosion of bright colours and beautiful smiles, as various colleges performed their dance pieces, representing several cultures. Rangitikei College's Pasifika Group, led by Year 13 student Anapogi Mefiposeta, was up against strong competition but the group held its own and performed beautifully. Year 13 student Christina Laki won the senior Samoa speech competition. The college congratulated Christina and the Pasifika Group for a wonderful performance and for representing the Rangitikei College with pride." Photo supplied.

BITS n' PIECES



Calling all singers, songwriters, musicians, and poets! Taihape Musicians Club is hosting

Watch for cybercrime

This week, several victims have been contacted by scammers claiming to be part of the Police Cybercrime Unit, or a telecommunications company. Scammers have requested bank details. Police say, "Do not engage with anyone on the phone and hang up immediately if you think you are being scammed. We urge you to have conversations with vulnerable or elderly family members to help ensure they are aware of the tactics often used by scammers. Remember - government agencies will never contact you out of the blue and ask for bank details."

Anyone who believes they are a victim of a scam is advised to contact police.

an Open Mic Night on Saturday 27 July. To book a spot, contact 021 0202 9007 or taihapemusic@gmail.com

ADVERTISING DEADLINES

Display Advertising – Tuesday 12 noon

Classified Deadline – 12 noon Wednesday

Read it Thursday! online www.districtmonitor.co.nz

In your box - on line and on Facebook.

Rangitikei
DistrictMonitor

Phone: 06 327 7881

districtmonitor@xtra.co.nz monitoradvertising@xtra.co.nz

RANGITIKEI WHEELIE BINS

- Kerbside collection
- Weekly or fortnightly
- Commercial pickups

Locally owned and operated

Phone 06 327 8336 or 021 477 814

BIN HIRE

100% New Zealand owned and locally operated

Bin Hire Specials

Various sizes from 1.8m³ - 9m³

Prices may vary beyond Marton boundary
Weight limits apply
Please contact us now to discuss your requirements

Phone 06 324 0693
0800 424 990

www.smartenvironmental.co.nz

MARTON BUSINESS HOUSE CHRISTMAS

Winterfest

AWAPUNI RACES SATURDAY 6 JULY

FREE ENTRY

The Christmas Grotto is popping up again at the Winterfest at Awapuni Racing Centre, featuring:

Face Painting	Christmas Ponies	Hot Chocolate	Santa Beaming in Via Skype
---------------	------------------	---------------	----------------------------

Starts 11:30am | FREE BUS FROM MARTON TO AWAPUNI

WIN 4 SEATS TO CHRISTMAS AT THE RACES \$600 VALUE

Awapuni Racing Centre

Visit awapuniracing.co.nz

The Races

CLUB SCENE



Turakina WI

On Wednesday 26 June, 9 members enjoyed the usual potluck lunch, prior to getting down to business. A thank you was received from Graze Out Caters Marton and Wanganui Women’s

Refuge for our donations last month. J Marshall gave a report on the recent AGM. in Taupo. Turakina WI's entry of an animal, made using 3 or more CD discs, won 3rd place, helping the Wanganui Federation come 3rd in the May Martin trophy - a nice surprise. Turtle read the motto: Do more of what makes you happy. Roll call collected 33 grocery items for Marton Foodbank The 99th AGM conference will be held next year from May 25- 27 at the Annesbrook Church Hall in Nelson. Plans are underway for the centenary of the WI movement in 2021. Celebrations are to be held in Napier (where the first meeting in NZ was held and is the resting place of our founder Miss J E Jerome Spencers) from February 12-14. A bronze sculpture of Miss Jerome Spencer will be unveiled on the Sunday. The 2021 AGM will be held in Wellington in June, instead of late May, with a church service on Sunday Feb 13. Opening day is Monday Feb 14, business days Tuesday 15 and Wednesday 16.

Meeting competition results: Garden Gem: 1st Carolyn Turtle, 2nd Gay Manning, 3rd = Pat Perry & Joan Marshall.Floral: Winter Delight. 1st = J Marshall, 2nd C Turtle, 3rd = J Gillam & G Manning. Cooking: 4 Caramel biscuits. 1st J Gillam, 2nd Linda Mancer, 3rd G Manning. Handcraft: Knitted toy – up to 30cm. 1st P Perry, 2nd J Gillam, 3rd Trish Anderson.

Forest & Bird Update

It was very pleasing to have a good sized group of people last month for the delicious potluck tea and informative talk from Bill Fleury of DoC Manawatu about the progress of the Tiakina Nga Manu (Battle for our Birds) plan.

Bill Fleury reminded us of the serious forest collapse that was occurring - due largely to possums, deer and goats. Trials conducted circa 1990 found that by using 1080, it was possible to give a window of time for more kiwi to hatch and grow and for our forest to recover. Since then, some areas have been treated to enable whio (blue duck) hatch and fledge successfully. Over recent years this protection has been so successful that whio are beginning to be seen in areas where they had not been seen for years.

DoC are also successfully using 1080 to combat the results experienced in mast years, which appear to be occurring more and more frequently, possibly due to climate change. The mast provides excessive food, especially for rats, mice and stoats. Once the mast runs out the predators turn to bird eggs and chicks with drastic outcomes for our bird population. Successfully reducing mice and rats, means that the stoats which will eat carcasses are also reduced. It was encouraging to see that in test areas, the number of chicks which hatched and successfully fledged, had improved drastically, giving our native species an opportunity to increase their numbers.

Careful use of 1080 along with consultation with local landowners, appears to be the most successful tool DoC can use to protect our native fauna and flora at this time.

On Wednesday 10 July at 7.30pm in the Milne Room, St Andrew's Church, Broadway, Marton, Craig Davey will speak about the possible use of Gall Mite Control of Old Man’s Beard. This plant is a continuing problem in our local reserves, and other areas of bush, which takes an excessive amount of time, energy and money to control.

Real Life Therapy by Shirley Henderson

Give Change a Chance

I’ve been thinking a lot about change lately.

Positively, change can equal opportunity. And, when change is by choice, often it’s because there is an opportunity to improve oneself or one’s situation.

But change can be scary too. Especially when we are in positions of responsibility, with mortgages, families and expectations.

How hard is it, to be in a “good” job that allows us to live well but makes us miserable? How hard is it to be in a “poor” job that allows us to live but makes us feel trapped? Depending on everyone’s mindset, it can either be opportunity or disaster. Yes, it’s hard! Neither of these scenarios is easy. However, change can also be liberating and I have seen it with many people.

It can be a challenge to find the courage to make a change. What if it is the biggest mistake you’ve ever made?

What if you end up feeling even worse than you do now? Our lives are fluid and change can be out of our control. Change can be scary or freeing - it can be fearful or wonderful - it can be the worst or the best.

You are important. If you’re doing something every day that you would rather not be doing, then I encourage you to find something in every day that you love to do as well. And consider a change – everyday is as precious as you are!

Shirley Henderson Massage & Hypnotherapy

• Professional • Experienced • Confidential



I can help with...

- Stress & Anxiety relief
- Fears, Phobias & Habits
- Smoking & Addictions

CLINIC IN BEAUTIFUL BULLS

Senior Professional Clinical Hypnotherapist

Remedial and Relaxation Massage Specialist

BY APPOINTMENT ONLY

Call Shirley 06356 4871

text 027 269 0655

Happy Tours

The June Marton Happy Tours, midwinter luncheon saw a mammoth response, with 67 members attending. The bus was full plus we had to take four carloads of people. What a great day was had by all and what a super choice of venue. We had a very scrumptious luncheon with so much gorgeous food A huge thank you to the wonderful team at the Station Hotel in Hunterville. What a great place with a very warm ambience. We shall return again. Thanks again to Jean M for our super raffles, which were won by Andy and Loretta . Our next trip is Thursday 11 July and we will be heading to Woodville for the day, with a morning visit to the Woodville Museum then you can choose which lovely little cafe you’d like to dine at. I believe they all have a great reputation for good wholesome food. If the weather is fine, we will have a little bit of retail therapy and then after lunch. We will visit the Woodville Reed Organ Museum for a look and a demonstration and also a bit of a singalong. Bus will depart from Memorial Hall in Wellington Rd at 9am. To our Bulls and Sanson members - we will pick you up on the way. I hope you have got your seat booked. We look forward to seeing you all.

Marton Friendship Club

Raffles last week, were won by: Maureen Karl, Dawn Evans, Jean England and Les Collis. Our street raffle fundraiser is going well. Thank you Marton and district for your valuable support. Entertainers were For Folks Sake, a lively group of six from Palmerston North. Many different instruments beautifully played - Waltz Across Texas, Folsom Prison, Ragtime Anne – just to name a few. Good lively entertainment. Members always join in with many of their tunes. A welcome afternoon for everybody. This club has a variety of entertainment every week; music groups, mini stage shows, choirs. A nice warm comfortable hall, come along and find out. We are in Morris St. This coming week 5 July we will see a new singer and musician - Joy Slone. Come and listen and enjoy the afternoon. See classified adverts for street raffle results. Friday hall open 12.30pm, bring your lunch, make a cuppa and have a chat. It sure beats talking to four walls at home by yourself. Visitors and new citizens to Marton always welcome. The main programme begins at 2pm. We are a happy club, you will not be left standing at the door, an older member will help you settle in

Lions Club changeover



Marton Lions Club had a busy meeting last week, as they welcomed new member Blair Jamieson (right) and installed this year’s president, David Hammond (left).

David Hammond is a past president of the disbanded Bulls Lions Club and will bring plenty of experience to his year in the role at the Marton Lions club. He takes over from Roddy McDonald, who has been president for the past year. Photo supplied.

RANGITIKEI TIMBER LTD

The right price with sound advice

➤ 150x50 H5 SAWN RAILS - 3.6m only
\$3.99LM

➤ 150x50 H3 SAWN RAILS - 4.8m only
\$3.99LM

➤ 150x 40 H4 SAWN RAILS - 4.8m only
\$3.79LM

➤ 1.2M 45X45 H3 PG FENCE BATTENS
\$1.69 Each

➤ 2.1M 150x25 H3 FENCE PALINGS SECONDS
\$2.79 Each

ALL PRICES GST INCLUSIVE

34 Racecourse Ave, Marton

021 0290 2558

www.rangitikeitimber.co.nz

Email: Sales@rangitikeitimber.co.nz

MARTON BUSINESS HOUSE CHRISTMAS

Winterfest

AWAPUNI RACES SATURDAY 6 JULY

MARTON JOCKEY CLUB

STATIONERY ONE STOP & BOOKS

GET YOUR COPY OF BEST BETS FROM US!

237 Broadway, Marton Phone 06 327 4054
onestopstationeryandbooks@outlook.com

20% OFF

Slippers, Gloves & Winter Hats

Supporting Marton Jockey Club

Marton Pharmacy
Medicine + Advice

292 Broadway Marton
Phone 06 327 0050

Supporting Marton Jockey Club
Competitive pricing on vehicle servicing and repairs

Ask for Brad

I also do....
TUNE UPS & SERVICES
TYRES AND BATTERIES
AUTO ELECTRICAL
LIGHT ENGINEERING

G-MECH
GLASGOW MECHANICAL

8 Hammond St, Marton Ph 06 327 6979

Marton raceday a long tradition

Marton Jockey Club's most popular race day for locals is on this Saturday at Awapuni but Marton racing has a very long and proud history. At right is a poster from 1888 announcing a hack meeting, when RC Bruce was president - the first from when the club was was formed in 1882.



This Saturday's meeting adds a Christmas Winterfest theme to the annual Marton Business House Raceday which is a proven success on the club's racing calendar. Many Rangitikei and Marton owners often have horses on the card so the hope is that horses and trainers with local connections, will prove successful throughout the day. Entertainment in the Silks Lounge is presented by popular musician Brian Baillie and his band. Entry is free for the public and the Christmas theme is carried on with a Christmas Grotto for the kids, where they can skype Santa. Marton Business House Raceday is a chance to connect - with the added enjoyment of attending a quality race meeting.

"New Zealand's Favourite"

THE BUZZY BEE RANGE

NOW IN STOCK

Proud to support the Marton Jockey Club

McGruer's
McGruer's (Marton) Ltd
Broadway Marton Ph 06 327 8592

MOP MARTON OUTDOOR POWER

Pleased to support Winterfest Raceday

GT 3000Es Professional Power Generator	GT 7000Es Electric Start Generator	GT2005i Inverter Generator
\$1006 (GST Incl)	\$2200 (GST Incl)	\$1145 (GST Incl)

BACK UP GENERATORS IN STORE NOW!

222 BROADWAY, MARTON
PHONE 06 327 7501

Central Glass & Aluminium

- ❖ Reglazing
- ❖ Splashbacks
- ❖ Mirrors
- ❖ Pet Doors
- ❖ Frameless Showers
- ❖ Balustrades
- ❖ Retrofit Double Glazing
- ❖ Aluminium Windows & Doors
- ❖ Renovation & Replacement Windows

06 355 0202
713 Tremain Ave,
Palmerston North
Email: www.cggl.co.nz

We are proud to support the Marton Jockey Club Winterfest meeting

Pleased to Support Marton Jockey Club's Winterfest & business house raceday

New range of Hape toys in store

Ward's FURNITURE LTD

19 BROADWAY, MARTON
PH 06 327 6045

COBHAM PLUMBING & DRAINLAYING

Pleased to support Marton Jockey Club

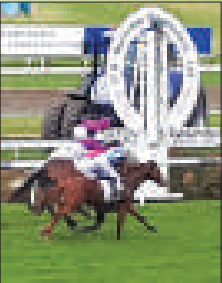
Septic Tank Cleaning
Drain Cleaning Machine
Drain Camera

Hynds Lifestyle wastewater systems
(Approved Installer)

PH 06 327 8918
Peter Rine
171 Broadway, Marton

Master Plumbers
Representing Excellence

Saturday July 6, 2019



From the president

Hi everyone,



Come and join us this Saturday 6 July for our exciting Chrstimas themed Winterfest meeting which includes the popular annual Marton Business House race. Our midwinter meeting has become one of Marton's most popular annual events and brings together hundreds of local business owners and guests in the Silks Lounge at Awapuni for raceday.

The races listed on the card are proudly sponsored by eight vibrant Marton businesses and the Marton Jockey Club appreciates and thanks them for their commitment to local racing, along with the many businesses from Marton and district who have combined for the business house race. We are expecting a very big crowd of sponsors and friends who will catch buses from Cook's bar

at 10.30am on Saturday - arriving at Awapuni Racecourse in time for the first race.

A huge amount of work has gone into organising the meeting by the Marton Jockey club committee. My thanks go to them for their hard work to make it great day out.

Entry is free for the public and the Christmas theme is carried on with a Christmas grotto for the kids.

Once again, I would like to thank our race sponsors and local business house sponsors for their generosity and enthusiasm for the day.

I look forward to seeing you all there.

Kenny Duncan
president
Marton Jockey Club

PGG Wrightson

High St, Marton Ph 06 327 4730

**Proud to support
Marton Jockey
Club's Business
House Raceday**

PGG Wrightson Real Estate

RURAL | LIFESTYLE | RESIDENTIAL

100%
committed
and focused
on selling.

If you want someone who has a wide range of knowledge about Rural Real Estate, has been involved with farmers and farming all his life and is committed to providing the best possible professional and confidential service, call Doug.

Doug Glasgow
B 06 327 4732 | H 06 327 3723
M 027 204 8640
DougGlasgow@pggwrightson.co.nz

www.pggwre.co.nz

PGG Wrightson Real Estate is a registered trademark of PGG Wrightson Ltd.

Helping grow the country

**See
you at
Marton
Raceday**

Rangitikei

**District
Monitor**

06 327 7881

Supporting
Marton Jockey
Club

districtmonitor.co.nz

MARTON BUSINESS HOUSE
CHRISTMAS

Winterfest

AWAPUNI RACES SATURDAY 6 JULY

**Rob Peters
Builder Ltd**

**MULTI AWARD
WINNING**

**Proud sponsors of the
Marton Jockey Club**

Over 25 years experience in the trade
NZ Licensed Building Practitioner
NZ Trade Certificate

www.robpetersbuilderltd.weebly.com
Email: rob.peters@xtra.co.nz
Ph 06 327 8380 Cell 0274 406897

**Rangitikei
Tyre Centre.**

**Proud to
support
Marton
Jockey Club**

From wheelbarrows to station
wagons, we have
the tyres to suit
your needs and
service that will
make you smile.



384 Wellington Rd, Marton.
Phone 327 7886. Email: rangis_tyres@xtra.co.nz

BRIDGESTONE TYRE CENTRE

Local, Licensed Builders

IN FOR A WIN

**WITH THE
MARTON**

JOCKEY CLUB

NEW HOUSES
ALTERATIONS
FARM BUILDINGS
ADDITIONS
KITCHENS
BATHROOMS
CONCRETE

SUPPLY AND INSTALL:
ALUMINIUM DOORS
AND WINDOWS
HOUSE INSULATING



**RAYNER
BUILDING LTD**

Phone

027 272 7047



**EVANS HENDERSON
WOODBIDGE**

BARRISTERS & SOLICITORS

"For Commonsense Solutions"

Specialists in.....

- ◆ Conveyancing
- ◆ Estate Planning
- ◆ Litigation
- ◆ Trusts
- ◆ Estate Administration
- ◆ Family Law
- ◆ Commercial Law
- ◆ Business Advice

Proud to support Marton Jockey Club

J.F.C. Henderson, LLB D.M. Woodbridge, LLB F.C. Devlin, LLB

333 Wellington Rd, Marton

Phone: (06) 327 7159

Fax: (06) 327 6932

www.ehw.co.nz

email: enquiries@ehw.co.nz

5A Bruce St, Hunterville

Phone (06) 327 7159

Fax: (06) 322 8566



Winterfest Raceday and Business House Raceday



MARTON JOCKEY CLUB

Marton Jockey Club acknowledges the generous support of the following Marton business houses at its forthcoming raceday Saturday July 6, 2019

Race Sponsors

Kelly & Associates **Rayner Building**
Bonny Glen Landfill (Midwest Disposals) **J & J Walters**
Evans Henderson Woodbridge Barristers & Solicitors
Richards Construction **James & Son** **BJW Motors**



**PROUDLY SUPPORTING
MARTON JOCKEY CLUB
FOR
18 YEARS**

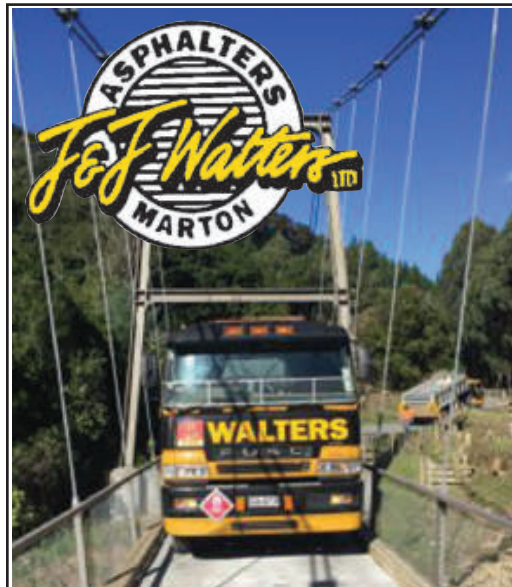


CENTRAL

**40 RACECOURSE AVE "REMEMBER
- MARTON WE'LL GET IT
PH 06 327 5458 RIGHT"**

Marton business house sponsors

McVerry Crawford Motor Group	Harvey & Calkin Glass	Rangitikei Tyre Centre
Central ITM - Marton	HR Jones	Crewcut Wanganui
Cooks Bar	The Downs Group	Allan McNeil
Hautapu Pine Products	Marton New World	Pro Powder Coating
John Henley Builders	Dan O'Leary	Farmlands
P J Rayner Decorating Ltd	Dean Cunningham	Wing Bros
Rob Peters Builder	Speed Engineering	
Fleetwise Transport Intelligence	Coombe Smith Rangitikei	
Arable Solutions	Rangitikei District Monitor	
Cobham Plumbing & Drainage	Robbies Mechanical Services	
GK Skou Transport	McDougal Agricultural Ltd	
Domestic Water Services	Doug Glasgow - PGG Wrightson Real Estate	



We are the sealing industry leaders, with over 68 years and three generations of experience working for NZ Transport Agency, Local Authorities and private clientele.

We are proud to be associated with the Marton Jockey Club and appreciate the opportunity to sponsor the races.

**Contact: Andrew Walters
027 289 2120**



**NEW WORLD
Marton**

**Proud to support
Marton Jockey Club's
Winterfest meeting**

**100% NEW ZEALAND
OWNED**

**Richards Construction Ltd is proud to support
Marton Jockey Club's midwinter race meeting**

For all your building requirements contact

Richard Ellery

0274 425 128 06 327 6863
Email rconstr@xtra.co.nz
www.richardsconstruction.nz



**Five Gold Reserve
Awards and a
National Winner**

**RICHARDS
CONSTRUCTION LTD.**
Cnr Bowen & Follett St, Marton



BJW Motors Limited



**WOF's, Servicing, Tune-ups
& All Mechanical Repairs
On all Makes & Models of Vehicles**



**Proud to be associated with
Marton Jockey Club
Look forward to seeing you
all at the races**



MARTON MEN’S HOCKEY

The final round, before the division split, for the Marton Hockey Club men’s team took place at the weekend, against Marist. Marton fired straight out of the gate, scoring in the fourth minute; thanks to a good touch by Kian Belk. Just a few minutes later, Flynn Kowalewski added to the scorecard, with a superb back stick shot. Kowalewski would score again, early in the second quarter, before Tom Turkington added a fourth goal in the third quarter. Todd Sutton made it 5-0, with a minute left in the match but Marist was able to have the last laugh, scoring a goal during an overtime penalty corner. Kian Belk received 3 MVP points for a standout game, with Bradley McDowell getting 2 and Kaleb Ngatua 1. You can follow the Marton Hockey Club’s progress on Facebook at www.facebook.com/MartonHC.



8-BALL POOL

Both Rangitikei sides will contest division 2 in the second round of the Wanganui Pool Association’s interclub competition. In the final round of qualifying matches on 26 June, 4th placed Marton played 5th placed St John’s Tane, in a match that would decide which team went into div 1 and which went into div 2. After beating leaders Wanganui East Red the previous week, Marton had high expectations but were ‘brought down to earth’ by an in-form St John’s side, comprehensively losing the singles 10-2. Only Gary McNeill and Peter Lissington recorded wins for Marton. A better performance in the pairs however, saw Marton winning 5-4, for an overall 14-7 score-line in favour of the Wanganui side. The Allan Pond / Stephen Lewis and McNeill / Lissington pairings each won 2 from 3. Bulls RSA hosted the strong Castlecliff team and nearly scored an upset, just going down, 10-11. Bob Bligh, Tracey Holdaway and Carole Hunt each had 2 wins for the home team, which led 7-5 after the singles rounds. Castlecliff then recovered, to take out the pairs 6-3. Hunt & Winston Holdaway had 2 wins for Bulls.

TARGET SHOOTING MARTON

Results 1/7/2019. A very busy night at the range this week, as we hosted the Rongotea club for the second interclub match of the season. The Marton D1 team came out the overall winners on the night - well done to those shooters. Generally Marton members shot very well on the night, with a good number on 194 scores. Bob Crawford had a very good night and is starting to enjoy his shooting again. Peter Lissington was one of only two shooters to shoot a 100 on the night - well done Peter. Matthew Read 99.05 98.05 197.10, Kayla Gledhill 98.06 97.04 195.10, Jake Wright 98.06 97.03 195.09, Tony Bayler 96.04 98.04 194.08, Bob Crawford 98.06 96.02 194.08, Peter Lissington 94.02 100.06 194.08, Samantha Gledhill 96.03 98.04 194.07, Allan Wright 98.05 96.02 194.07, Brent Read 97.04 97.02 194.06, Don Hamilton 98.01 96.02 194.03, Fred de Burgh 95.02 97.05 192.07, Barry Nelson 97.04 95.01 192.05, Fiona Mills 98.05 93.03 191.08, Dave Gledhill 94.02 97.04 191.06, Gary Cuff 94.03 96.02 190.05, Wayne Hunt 96.02 93.03 189.05, Alan McCubbine 94.01 95.03 189.04, Neville Rhodes 90.02 91.00 181.02, Graeme Sixtus 85.02 92.03 177.05, John Mills 94.01 83.00 177.01, Jacob Harris 86.02 89.01 175.03, Kevin Moody 89.03 82.01 171.04.

MARTON LADIES’ GOLF

Results from a wonderful winter day in the Par Cup competition, Wednesday 26 June. Points for silver: J Ritchie +3, M Simpson -4, B Bielby -6. Points for bronze 1: S Marshall all square, G Burne-3, A Fleming-7. Points for bronze 2: D Singer all square, E Bowler -1, N McDermott -3. Haggie - div 1: J Ritchie, S Marshall, G Burne. Div 2: D Singer, E Bowler. Twos: E Clarke. Kevin Jensen sponsored hole 17th, J Ritchie, 6th, B Bielby 3rd. Sponsored balls: M Simpson, N McDermott, H Wilton. Lucky draw: A Fleming.

RANGITIKEI GOLF CLUB

Wednesday 26 June - stableford: Pat McCarthy & Wilfred Hensen 39pts, Ash Reed, Neville Berendt, Bill Patene & Joseph Tapper 37pts, Joe Yorke & Henry Potaka 36pts, Bruce Kinloch, Peter Young & Neil Atkins 35pts, Dave Wright 34pts, Dan Scotson & John Luckham 33pts, Ron Harris, Edith Leary & Jason Harris 32pts, Lynne McDonald, Kevin Taylor, Michelle Mossop, Daniel Waho, David Rohde & Steve Boyens 31pts. Twos: Kevin Laird & Joseph Tapper on 5th. Best stableford on 10, 11, & 12: Dan Scotson 8pts. Lucky draw: Pat Pearce. 29 June: Peter Baker Glass stableford: seniors: Ron Harris 44pts, Tamati Anaru 38pts, Luke Kleinschmidt, Hone Morris & Jason Harris 37pts, Bruce Kinloch 34pts, Lynne McDonald & Bronwyn Meads 33pts. Juniors: Peter Young 37pts, Cynthia Luckham & Dan Scotson 36pts, Ash Reed 35pts, Alec Benson 34pts, Bruce Simpson, Michelle Mossop & Pire Wehi 33pts, John Luckham & Joe Yorke 32pts. Twos: Al-lek White - 3rd, & Ron Harris 12th.

MARTON GOLF CLUB

Thursday 27 June: A Duncan 38, T Willis 37, D Tarrant 37, B Hausman 36, R Yorke 34, B Beck 34, T Hammond 33, D Clark 33, D Fullerton Smith 33, T Mc Verry 30. Don’t forget 11am tee off. Sat 29 June - Leighann Belsham won this week’s stableford competition and the Downs Appliances voucher, with 41 points, followed by Anne Fleming on 40 points. Other results: Darin Arnott 39, Nik Maas 37, Graham Marshall, Adrian Duncan 36, Tony Mischewski, Jenny Ritchie, Colin Williams 35, Glen Jongen, Troy Calkin, Alan Bates 34. Twos: 6th Troy Calkin, 12th Jenny Ritchie, Alan Bates, 17th Jacob Hughes. Jackpot 8 balls not struck. 3FBH: Tim McVerry, Bryan Cameron, Dick Fullerton- Smith, Margie Simpson. Sat July 6: Duty - Darin Arnott. Bar - Dick Fullerton – Smith, Ed Sherriff. Sunday July 7 duty: TBC.

HAWKESTONE GOLF CLUB

Tuesday 25th. Tricklebanks Ltd, Top Dog stableford; 9 hole competition. Ross Little & Grant Forbes 16, Dave Penfold 15, Greg James & Les Neumann 14, Brian Philips, Rae Cadwallader & Rae Karatea 13. Nearest pin: Grant Forbes. Lion challenge; Dave Penfold. Saturday 29th. Central ITM mini meat tournament - stableford: s/men; G Cunningham 37, G Bond 35, D Rohde 34, G Stanton by lot from G Forbes 32. J/men: P Weeks 43, J Hill 41, B Thorby 38, N Rackham 37. Women: S Wells 34, P Charlesworth 32, L Tipu 29, D Todd 27. Nearest the pins: s/men = G Stanton. J/men = N Rackham. Women = L Pickford. Taimui challenge; Grant & Mike P bt. Diane & Suzanne. Next challengers: Toddy &

Employment



Are you personable? Do you work well in a team and are you confident to work alone?

The Rangitikei Anglican Parish is seeking a part time administrator to work from the parish office in Marton. The successful applicant will align with the vision and values of the parish, have proven skills in communication, administration and financial management. Prior experience with google suite and xero are an advantage. A job description is available from the parish office, 23 Maunder Street, Marton or email info@anglicanrangitikei.co.nz. Enquiries and applications, including a CV and cover letter to: employment@anglicanrangitikei.co.nz or Sue on 021 201 4483 and Linda on 027 444 4852. Closes 5pm 15 July 2019.

In Memorium

ELLERY, Geoffrey

RIP 4/7/2014

We’re always thinking of you, since you have gone away
And all of us who loved you, miss you most of all today.

Raffle Results

Marton Friendship Club

Raffle Result

Drawn Monday 1 July at Marton Police Station.
1st prize - Mrs Carpenter - No 497
2nd prize - Lee O’Neal - No 428
3rd prize - Gina Walters - No 706
All winners have been notified.

Acknowledgements

DILLON, John Stewart

Pauline and family wish to sincerely thank relatives, friends and neighbours for their words of comfort, cards and support during the sad time following the loss of John.

Special thanks to St Francis Xavier Church, Get and Give, The Christian Welfare Opportunity Shop (Marton) and the staff and volunteers at Arohanui Hospice, Palmerston North.

Wanted to Buy

SUZUKI SJ410

going or not. Any Condition.
Ph Mike 027 4412 697

Spike. Coming events; Tuesday 9 hole golf; 9.30 am tee off. Saturday 6: club champs - 3rd round qualifying: teeing off from 11 am. Visitors and casual golfers play 9, or 18 holes for only \$10. New members please enquire to hawkestonegolf@gmail.com about our membership rates. All welcome. Other enquiries: contact Grant; 0210 572 931.

RANGATIRA GOLF CLUB

2nd round Taiuru Cup, 22 June, men: A Lock S Martin +5 , C Renshaw A Bonnor + 4, R Leary + 3, Z Guiniven M George W Guiniven + 1, J McAlley A McAlley J Bismark all square. Twos: R Lambert, S Martin, G Eldridge. A Lock. Putting: W Guiniven. Taiuru Cup winner: A Lock. Ladies, 26 June; 4th qual LGU: N Martin net 70, J McAlley, J Alabaster 76, M Young, D King 79, K Fallaver 80. Twos: P Lilburn, M Young. 9 hole, 26 June - par: R Florence +2, P Ross all square, T Dorey -1.

MARTON 9 HOLE GOLF

A beautiful Tuesday saw 29 players play a medal round, with some good scores. 1st division: 1st Brian Willis 34 c/b, 2nd Brian Short 34 c/b, 3rd Brian Shaw 34. 2nd division: 1st Roy Powell 36 c/b, 2nd Mike Morland 36 c/b, 3rd Barry Florence 36. 3rd division: 1st Marion MacPhee 32, 2nd Adrian Penning 40 c/b, 3rd Jill Bryant 40. Lucky card: Joe Graham. Next week’s starters: Roy & Madelene Powell. Cards: Sheena Marshall & Barb Crawford. Kitchen: Jean Duncan.

Public Notices

Diabetes Support Group

How Adult Stem Cells can help your body repair itself
Saturday 6 July, 2pm
Friendship Hall, 7 Morris Street, Marton
For further information, please call 06 327 7281 or 021 342 524
(supported by funding from Rangitikei District Council)



BULLS
HEALTHY
BASTARDS
SENIORS

Bulls Rugby Club Day 2019

Saturday 6 July
12pm Lite Lunch

Senior 2nds VS Bush at 12.45pm

Presidents VS Freyberg at 2.45pm

Special welcome to all our sponsors and supporters and all you old timers.



WHISKER
HARVESTING LTD.
↑ ↗ →

Hunterville Bowling Club Inc

AGM

To be held in the clubrooms Saturday 14 July 2019 at 2pm.

Agenda:

President’s Report, Presentation of Accounts, Election of Officers

Followed by:

Presentation of Trophies.

President Vitaus Pecekajus
All Welcome to attend

Rangitikei Toy Library

AGM

Thursday 25 July at 7.30pm

52 Bredins Line, Marton

Enquiries to Rachel Maher 021 024 43469
Prospective members and/or volunteers welcome to attend.



RANGITIKEI
DISTRICT COUNCIL
Making this place home

Intention to Close Road to Vehicular Traffic

Pursuant to Section 342 (b) and the Tenth Schedule of the Local Government Act 1974, notice is hereby given that, the Rangitikei District Council intends to consider closing the roads listed below for the purpose of permitting The Mudder 2019 Event to take place.

Roads to be closed: **Makuhou Road** will be closed to the general public and will be operating as a one way road with entry to **Makuhou Road** for event participants from Tutaenui Road and exiting via Turakina Valley Road.

Saturday 21 September 6.00am till 4.00pm one way traffic will be in operation.

Any person objecting to the proposals is called on to lodge notice of his/her objection and grounds thereof in writing, before 4.00 pm, Friday 19 July, at the office of the Rangitikei District Council, Private Bag 1102, Marton 4741.

Should the Rangitikei District Council decide to close roads, a public notice shall be given.

Ross McNeil
Chief Executive

Rangitikei District Monitor

LOCAL SERVICES

Support Local Rangitikei Businesses



MARTON LAUNDROMAT
SELF SERVICE 5AM - 11PM
SERVICED 8AM - 5PM
ASK ABOUT OUR ELDERLY RUN: TUESDAYS.
06 327 5569. LOCALLY OWNED.

Thinking Real Estate?
Call Carol Lewis or Mike Lewis
0800 627 866



AI/Posse Limited MRE/MZ | 06 355 4324 | 165 Broadway Ave | Licensed Under the REAA (2008) | Each Office Independently Owned and Operated

CENTENNIAL PARK DAIRY
OPEN 7 DAYS 7am - 7pm



176 BROADWAY, MARTON
PH 06 327 7398

COBHAM PLUMBING AND DRAINLAYING



LOCAL SEPTIC TANK CLEANING
& WATER TANK CLEANING

- * Woodfire sales, repairs, installation
- * Septic Tank & Effluent Systems
- * Drain Cleaning Machine
- * Chimney Cleaning

171 Broadway, Marton Phone 06 327 8918

DOMESTIC WATER SERVICES



0800 400 135

Layton Hammond 027 4421 629



STORAGE UNITS

- Clean, Dry, Secure, Convenient.
- 7m³ upwards to full Household.

See website for details or Phone owner Joe Karam to inspect.

34 High Street Marton | www.jkselfstorage.co.nz | Ph 06 327 6030

MARTON PANEL & PAINT

Broadway Heights, Marton
Ph Ian on 06 327 7455

ROBBIES MECHANICAL SERVICES

SALES-SERVICE-REPAIRS
Mowers, chainsaws, motorcycles and more

"All personally guaranteed"

404 Wellington Rd Marton
PH 06 327 7115

HARVEY AND CALKIN GLASS



Household Windows
& Car Windscreens
Troy Calkin

385 Wellington Rd, Marton.
Ph: 327 8750 A/H Ph 327 6917

TANK CLEAN

- Septic Tanks
- Water Tanks
- Grease Traps

Contact Tim Spetch
06327 7806
027 974 2445
timspetch@hotmail.com

HOGAN PLUMBING



Plumbers, Drainlayers
& Roofers
Natural Gas Sales
& Installations
Wood Fires

Phone 06-327-7838

BEN'S DINGO FREE QUOTES

Hole Boring 250mm 350mm 450mm 600mm
Trenching 4 in 1 Bucket Rotary Hoe
Pole Sheds Water Lines Effluent Lines
Power Cables Section Work Urban Fence
Packages Cleaning Covered Yards Calf Sheds
Stables and more from this little digger!
Ben & Jackie Lucas
Marton
06 327 8792 027 684 1305



Houses • Farm Buildings • Concreting • Alterations • Additions
All qualified tradesmen

Ph: 027 2727 047

Lawnmowing
We Love to mow your lawns!

Free Quotes

Hedges, tree trimming, section
tidies, rubbish removal

0800 800 286

www.crewcut.co.nz

CREWCUT
LAWN & GARDEN

OHUTU MEAT PROCESSORS

...from paddock to plate...

Ph 06 388 0603

Alistair Mclean 027 232 4584
Nathan Mclean 021 0263 1534

WE TRAVEL

We now Vacuum Pack
We kill & process dog food
All small goods and gluten free

P.J Rayner Decorating

PH 0274 427 816
06 327 8160 A/H

RANGITIKEI SECURE STORAGE

Ideal secure lock-up for your

- Boat • Caravan
- Car • Household goods
- and much more...

different sizes available for short or long term **PH 021 163 6399**

TV REPAIRS

REDWOOD TV
TV & APPLIANCE REPAIRS AND INSTALLATIONS



Trevor Ph: 06-327 7258 | Mob: 027 662 2809
muntedtv@xtra.co.nz

Your function specialist for over 100 guests

Awapuni Racecourse, Palm North

Lewis Jones

Ph 0800 11 FOOD (24 Hours)
email:creativecatering@xtra.co.nz

creative CATERING

Heat Transfer Units • Freeview Aerial
Upgrades • Commercial Wiring •
Domestic Wiring • Home Automation
• Security cameras & alarms



Phone/text 027 280 4667
Office 06 327 5544

palmerston.north.central@laserelectrical.co.nz



- Outdoor Power Equipment
- Trailers/Chiller • Digger
- Temporary Fencing
- Portaloo's and more.

Enquiries welcome

VISION EXPERIENCE OPTOMETRIST



BROADWAY, MARTON
Phone 06 327 7589

Noticed this Space??

Get your business
going...advertise right
here - right now

Contact us
06 327 7881

CAREY'S JOINERY

Come and see Shaun
& the team to fix your
"kitchen envy"!

Ph/fax 06 327 7949 - 7 Bowen St, Marton
Mob 027 244 8866 - Email careys.j@xtra.co.nz

mcilwaine

- BUILDING SOLUTIONS

"No Job Too Small"

Qualified Tradesmen - New Housing,
Alterations and Additions, Joinery, Timber
Windows, Maintenance,
Light Commercial,
Farm Building, Concrete
Work, Aluminium Screen Doors



35 Russell St,
Marton Ph 06 327 4723

Water Pumps

'Call The Pump Man'

Just call 0274453 124

and Simon will
help you with your pump
requirements.
Expert sales and service
from the team at...



ADT DOWNS CONTRACTING ELECTRICIANS Ltd



Mechanical Repairs WOF Repairs
Tune-ups & services Tyres & Batteries
Auto Electrical Light Engineering
06 327 6979
8 Hammond Street, Marton
g-mechltd@outlook.com

Rangitikei/Wanganui

If you are contemplating selling your Farm or
Lifestyle then call Doug Glasgow, an experienced
and confidential Agent for an appraisal.

B 06 327 4732 H 06 327 3723 M 027 204 8640

www.pggwre.co.nz

PGG Wrightson Real Estate, 99 Wilson Street, Wanganui



Business Notices

SELL YOUR HOME WITH MARK & COLLEEN




GREAT COMMISSION RATE
FREE ONLINE ADVERTISING
FREE PROFESSIONAL PHOTOGRAPHY
AWESOME SERVICE



MARK EDWARDS
027 570 2102

COLLEEN EDWARDS
021 031 2442



BRIAN BAILLIE

MUSICIAN

Solo, duo, or full band options available for all occasions.

Contact Brian
027 2299 303
brianbailliemusic@gmail.com
facebook.com/brianbailliemusician

VEHICLE GROOMING

Is your car, van, tractor or boat in need of a wash, wax or interior groom?

Only quality products used:
Reasonable rates / Free quote:

Phone Michael Lampp 027 3111 340

WEEKEND EMERGENCY SERVICES

BULLS MEDICAL CENTRE

(06) 322 1222 8am-12pm - SATURDAY & SUNDAY.

Outside these times call 06 355 3300 to contact City Doctors, Palmerston North

PHARMACY

PLATT'S PHARMACY BULLS & MARTON PHARMACY - OPEN 'TIL NOON SATURDAYS

POLICE - 06 327 6555

POISON CENTRE - EMERGENCY 0800 POISON - 0800 764766

PLUNKETLINE - 24 HOUR 0800 933 922

AMBULANCE - Medical Emergency call 111

MENTAL HEALTH SERVICES - CRISIS INTERVENTION SERVICES
After hours & weekends 0800 653 358

OZANAM VILLA - WG - 06 345 4204

FREE 24 HOUR HEALTH ADVICE

HEALTHLINE

INCORPORATING *PlunketLine*

0800 611 116

A REGISTERED NURSE IS JUST A PHONE CALL AWAY

For Hire



HARRISON'S HireMaster WANGANUI
26 CHURTON STREET PH 06 345 7017

MARQUEES • MACHINERY HIRE • PARTY HIRE & SALES





CHERRY PICKERS SCAFFOLDING PERSONNEL LIFTER

100% Wanganui Owned & Operated
www.hiremasterwanganui.co.nz

027 332 4417

Digger Hire

1.7 tonne digger
1/2 day and full day rates

Available 7 days a week

CONCRETE GEAR HIRE

Dry hire hand held concrete cutters

Walk behind floor saws

Concrete power float

Concrete breaker

HALF AND FULL DAY RATES PH 027 2727 047

For Sale

Tommy's Firewood

Mac \$120 per cube
Pine \$100 per cube
Poplar \$80 per cube
Ph 06 322 1397
027 6466 438

Post Peelings, Sawdust and Firewood

Ph 06 322 1670
027 422 1670

Shed Stored Dry Pine

\$300 3.6 cubic metre
Ph 06 322 8120

Rangitikei

DistrictMonitor

CLASSIFIED ADVERTISING

Phone 06 327 7881

Public Notices



Cancer Society
Te Kāhui Matepukupuku o Aotearoa

For Hunterville, Marton, Bulls
WE ARE HERE TO HELP PLEASE GIVE US A CALL

Shirley Murray
06 327 7300 or
027 605 9026
(Support Co-ordinator)



LEARN TO FLY WITH THE WANGANUI AERO CLUB

Phone 06 345 0914
www.wanganuiaeroclub.co.nz

CHURCH SERVICES

MARTON BIBLE CHAPEL

Where you can find the meaning of life



Sunday 7 July
Worship Service 10am

Speaker:
David Jeremiah (DVD)

Subject:
The Good Samaritan
All Welcome

MARTON METHODIST CHURCH

Sunday 7 July
9.30am Service

Speaker: Syd Easton

to be held at St.Martin Lutheran Church
Pukepapa Road Marton

All Welcome
contact: Dulcie Powell 06 327 6081

Public Notices

Marton Bowling Club Inc

AGM.
Sunday 7 July,
2pm at the clubrooms.

ST FRANCIS XAVIER CATHOLIC PARISH

Weekly Masses
Monday - Thursday - Friday
Marton 7.45am Adoration - Mass 9am
Bulls Tuesday Mass 10am
Marton Wednesday Mass and Adoration 10am
Weekend Masses
Marton Saturday Mass 10am - followed by Reconciliation
Bulls Saturday Mass 6pm
Marton Sunday Mass 9.30am - 2pm Devotions
Rata Mass 9am, 4th Sunday of month. Whangaehu masses suspended.

FR PETER BROCKHILL
RUSSELL ST, MARTON
Ph 06 327 7840





ST ANDREW'S PRESBYTERIAN CHURCH MARTON

This Sunday - Family friendly service at 9:30am. The Good Shepherd.

Other weekly activities:
Companionship 11:00am to 2:00pm Wednesday - drop in for some fellowship and fun.
All Welcome

PLEASE NOTE:
Kids on Broadway & SALT Youth programmes suspended during holidays.



Rangitikei Anglican Parish

WORSHIP SERVICES

Sunday 7 July
8.00 & 9.30am St Stephen's, Marton
9.30am St Andrew's, Bulls

Wednesday 10 July
10.00am St Stephen's, Marton

Contact: Parish Office 06 327 8398

Whanganui Chronicle

Missed deliveries Monday to Saturday
Ph 0800 349 071

Funeral Directors

BEAUCHAMP

- FUNERAL HOME -



Proudly serving the Rangitikei since 1981
Peter, Julie, Emily and Anthony Beauchamp

Call us on 06 327 7029 to discuss your needs and allow us to continue to serve and support our community with the guarantee of excellence and unbeatable value that has been our trademark for the last 30 years.

We do not charge for travel within the Whanganui, Rangitikei or Manawatu areas
Beauchamp Funeral Home and Cobham Chapel
18 Morris St, Marton
P: 06 327 7029 e: admin@beauchamp.co.nz w: www.beauchamp.co.nz

Liz Rayner - Owner/Editor/Publisher
Allan Pond - Advertising

Editorial & advertising produced by R & R Media Ltd
for Rangitikei District Monitor,
355 Wellington Rd, Marton

Rangitikei

DistrictMonitor

Reaching Rangitikei Readers

Phone | 06 327 7881 | monitoradvertising@xtra.co.nz
Enquiries Email | districtmonitor@xtra.co.nz
Website | www.districtmonitor.co.nz

Published weekly and delivered FREE to Marton, Bulls, Turakina, Hunterville, Ohakea Base, Mangaweka, Taihape

ADVERTISING DEADLINES

DISPLAY ADVERTISEMENTS
12 noon Tuesday

CLASSIFIED ADVERTISEMENTS
Noon Wednesday

PH 06 327 7881 FAX 06 327 5162
Box 79, 355 Wellington Rd, Marton

PROUDLY PRINTED BY



www.webstar.co.nz

Rangitikei

District Monitor

SUDOKU • HARD

			7					2
		3	8					5
7		6						
	5			1				
4		8				6		7
				9			3	
						7		8
2					5	1		
9					4			

27 June Solution

1	9	7	3	2	4	6	5	8
6	2	4	8	5	9	7	3	1
5	3	8	6	7	1	2	4	9
7	1	9	5	4	6	3	8	2
2	4	5	7	3	8	9	1	6
3	8	6	9	1	2	4	7	5
9	6	1	4	8	3	5	2	7
4	7	2	1	9	5	8	6	3
8	5	3	2	6	7	1	9	4

MARTON BUSINESS HOUSE
A CHRISTMAS

Winterfest

MARTON JOCKEY CLUB INVITES YOU TO BE A PART OF THIS
GREAT DAY OF RACING ACTION

AWAPUNI RACECOURSE  SATURDAY 6 JULY

BUSINESS HOUSE SUPPORTERS PACKAGE

\$400 + GST

Package includes:

Return bus from Marton to Awapuni
Racebook acknowledgement as
a supporter and sponsor of the
Marton Jockey Club.

Two tickets to the Christmas
Winterfest function in the stunning
Silk Lounge including:

- Superb Christmas themed buffet luncheon followed by dessert.
- Beverage package (includes standard beer, wine, tea and coffee, and non-alcoholic beverages) throughout the day.
- Racebooks and pens.
- Business House Mock Punters Club will be run throughout the day.

Additional tickets \$125.00 incl GST

For further information contact Deanna on
06 356 4940 or email
hospitality@manawaturacing.co.nz



RANGITIKEI LINE BULLETIN

Adoption of the 2019/20 Annual Plan

At its meeting on 27 June 2019, Council adopted the 2019/20 Annual Plan and the associated rates resolution. The average increase in rates from 2018/19 to 2019/20 is 3.94%, very similar to that projected in the Consultation Document (3.96%). The Annual Plan is the blueprint for Council's projects and performance during the year. Copies will be available on the Council's website and at Council's Marton administration office and libraries.

New Community Amenities on Taihape Memorial Park

Council has indicated its preference for a fully completed two-storey building (in terms of the concept provided by Copeland Associates Architects), at an estimated cost of \$2.935 million. However, before proceeding further with this, Council has requested the Chief Executive to negotiate a Memorandum of Understanding with Clubs Taihape (to be ratified by Council resolution at its August meeting) on progressing the development of the joint facility, to include:

- the respective commitments, roles and responsibilities of the parties, including the provision/securing of funding,
- the needs/requirements of Council, Clubs Taihape and the Taihape community,
- the timing of the project, including when Council expects to make a decision on proceeding to construction, and
- the preferred model for ongoing management and operation of the facility, once completed.

Mangaweka Bridge

Both Manawatu and Rangitikei District Council have considered the economic analysis on keeping the current century-old bridge as a walking and cycling route after the new bridge has been constructed and commissioned, and agree in principle to its retention. The next stage is a public meeting (in August) to discuss the implications of this, including whether this bridge could be transferred to a community trust.

Taihape 125th Anniversary

On 12 September 1894 the first members of the Collinsville Cooperative Settlement Association arrived from Canterbury, under the Government's Improved Farm Settlement Scheme. Sawmills had already been established in the area and Maori had a presence in the area. At first the settlement was called Collinsville, then Hautapu (from the nearby river) but soon changed to Otaihape to avoid confusion with other places with a similar name, and later shortened to Taihape. Borough status was achieved in 1906.

At its meeting on 27 June 2019, Council approved a further grant of \$1,500 to the Taihape 125th Anniversary Celebration Committee.

Proposed New Marton Civic Centre

Lottery Environment and Heritage has recently approved a grant of \$50,000 as a contribution to the work presently being done to develop concept designs and associated costings options for the buildings Council owns in Marton's CBD – Cobbler/Davenport/Abraham & Williams. While

the street facades are the basis for the listing of all three buildings by Heritage New Zealand, the interior of the Davenport Building is considered of particular interest by heritage experts. Independently, a business case is being developed to assess all options, including remaining on the present High Street sites. This work will be finished in August and will be followed by public consultation.

District Plan Change – Proposed Rezoning of Rural Land to Industrial

Council approved inviting public feedback during the period 1-21 July on the proposed rezoning 217ha of rural land near Marton (between Wings Line, SH-1, Makirikiri Road and the Main Trunk Railway). At present, the only industrial land comprises small and isolated lots. This feedback will be considered in August. A draft report on the proposed rezoning is on Council's website.

This is a preliminary to the formal approach for such changes prescribed by the Resource Management Act, at which time there is an opportunity to make formal submissions on the proposal (in September).

Farewell to Athol Sanson

On 28 June 2019, Council and many members of the community held a farewell function for Athol, who has been Team Leader, Parks & Reserves for the past four years, since Council decided to bring the service in-house. The numerous speakers acknowledged his many achievements, tremendous knowledge, dedication, community-minded approach and success in bringing together a highly motivated team.



Cheer New Zealand to the final with these **HOT PRICES**



140x45 SG8 H3.2
\$4.55_{LM}
4.2M LENGTHS ONLY

200x50 H4 TGV RETAINING WALL
\$5.00_{LM}
4.2M LENGTHS ONLY

250x50 SG8 ROUGH SAWN H3.2
\$10.50_{LM}
6M LENGTHS ONLY

PLYWOOD H3.2 NON STRUCTURAL 21MM
\$79.00_{SHEET}

ALL PRICES INCL GST
CENTRAL
40 RACECOURSE AVE - MARTON - PH 06 327 5458
Sales.marton@centralitm.co.nz

Marton Childcare Centre Marton Childcare Centre Marton Childcare



SPACES AVAILABLE NOW

From ages 0-6 years
WINZ Subsidies
20 free hours (3 years +)
30 hours for \$10 (3 years +)
Defence Discount

We have recently been reviewed by the Education Review Office and below are a couple of comments from them. . .

Warm, reciprocal relationships with parents and between staff are evident. These and the high ratio of adults to children enables teachers to know children's preferences and needs well.

Māori, and all children increasingly experience Te Reo Māori as a meaningful and authentic part of their early childhood experience.

Check out our Facebook page ©
We are licensed for 25 children and are open 715-530 daily
We are part of the Enviroschools programme and Healthy Hearts

428 Wellington Road (Across from NEW WORLD)
(06)3277570
martonchildcare@xtra.co.nz



Marton Childcare Centre Marton Childcare Centre Marton Childcare

REAL ESTATE



Licensed Real Estate Agent (REAA 2008)

LOWER AGENCY FEES OF 3.5%+GST TO SELL YOUR HOME

Phone 06 327 6690 Email: martonrealestate@gmail.com
420 Wellington Rd, Marton Trademe.co.nz

Phillip Mullins m: 027 203 2743 a/h: 06 327 6014



Call me - Phillip 027 2032743 to be
SOLD SOLD SOLD
I'm a fully licensed agent (not just a salesperson) with 19 years experience.
The Watsons offer;
Free Market Appraisal
No Advertising Fees
No Marketing Fees
No Photography Fees
and, of course, our Smart Commission Rate of 3.5% + GST

PRICE REDUCTION



10 Purnell Place, Marton
JUST MOVE IN AND BE COSY FOR WINTER
Extremely neat, warm and tidy 1970's brick home with aluminium joinery. Decorated in modern colours, with plush carpet. 3 bedrooms with wardrobes. Separate lounge that opens into the dining room and kitchen. Cosy logfire heating. Bathroom with shower, bath, and vanity. There is also a single garage, plus woodsheds and a covered verandah across the rear of the house. Fully fenced 650m² section. Realistically Priced to Sell at \$265,000.
Property ID: M1369

\$265,000



143 Broadway, Marton
RESIDENTIAL SECTION
Are you thinking of your retirement and need a section that is close to town to build your low maintenance dream home? Then this is the ideal site, being a 720m² flat corner section, making it an easy site to build on. Located approximately 200 metres from the centre of town, giving you easy access to shops, churches and medical centre. Services located in road frontage. Realistically priced at \$100,000.
Property ID: M1315

\$100,000

GET LISTED GET SOLD

Call Phillip 027 203 2743